



Boutwells Landing

The Brownstones

Row-style Homes

Welcome to Boutwells Landing

At Boutwells Landing, your ideal residence is complemented by an assortment of conveniences and amenities to enrich your life.

Enjoy maintenance-free living and comfortable, convenient floor plans. Regardless of which plan you choose, it's sure to reflect your sense of style as you add your own personal touch.

Included Amenities

- Telephone service
- Basic cable television service
- Utilities (heat, electric, central air-conditioning, water, sewer, and trash)
- Underground heated parking
- Continental breakfast six days/week
- Monthly dining credit
- Wings® wellness intellectually stimulating programs, spiritual care services, group fitness classes, fitness center with pool, volunteer opportunities
- Professional on-site staff
- Pastoral care
- Private storage unit
- Designated complimentary transportation to shopping and outings
- Health and wellness clinic
- Access to Town Center amenities and programs
- Campus information channel
- Month-to-month residency agreement
- Property tax and building insurance
- Interior and exterior home maintenance
- Lawn care and snow removal
- Priority access to other Presbyterian Homes & Services living and care options based on availability
- Smoke-free community

Other Conveniences

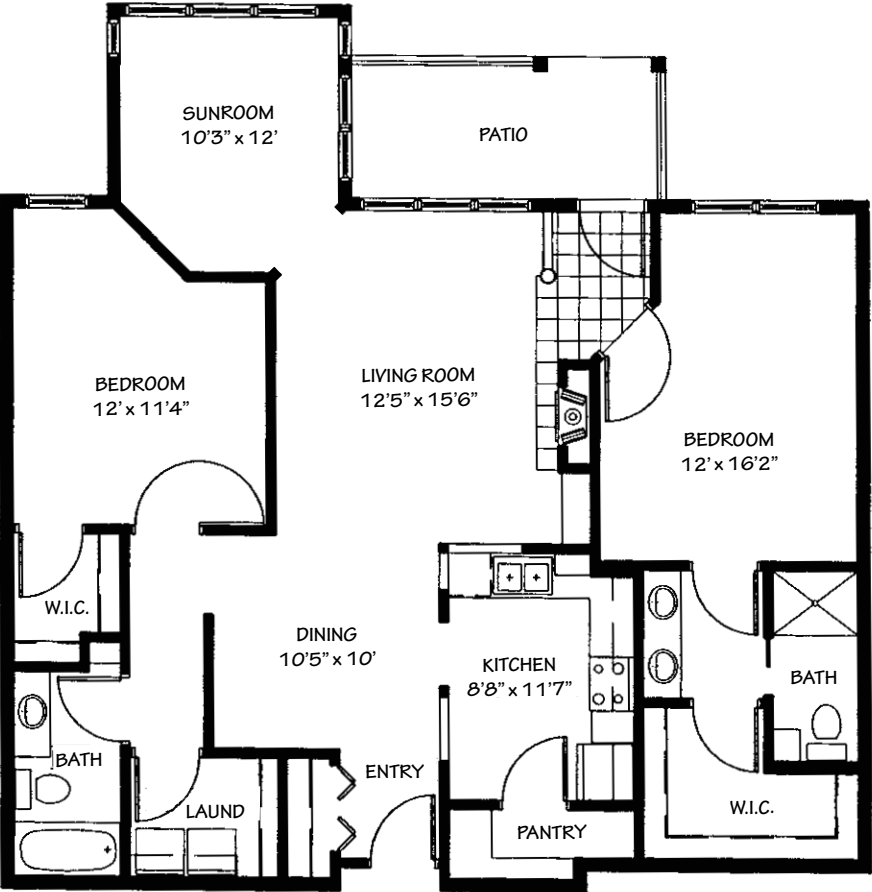
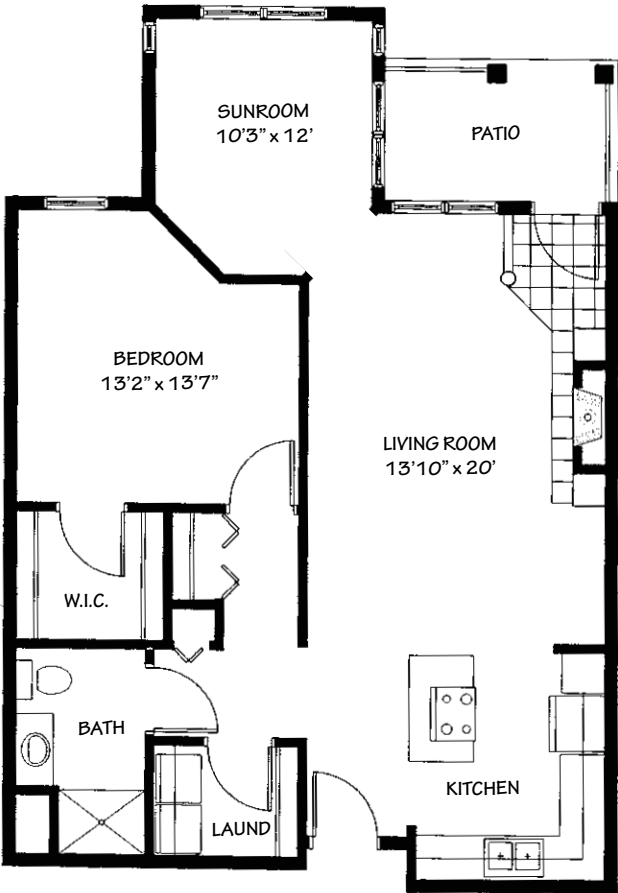
Additional fees may apply

- Additional restaurant-style dining
- Meal delivery
- Additional housekeeping
- Transportation for shopping and outings
- Additional underground heated parking
- On-site educational programs
- Certified personal trainers
- Home care and hospice services available through Optage®
- Additional cable channels
- Caller ID, call waiting and voicemail
- Guest suites
- Pets are welcome (guidelines apply)
- Outpatient therapy — physical, occupational and speech therapy



Sample Floor Plans

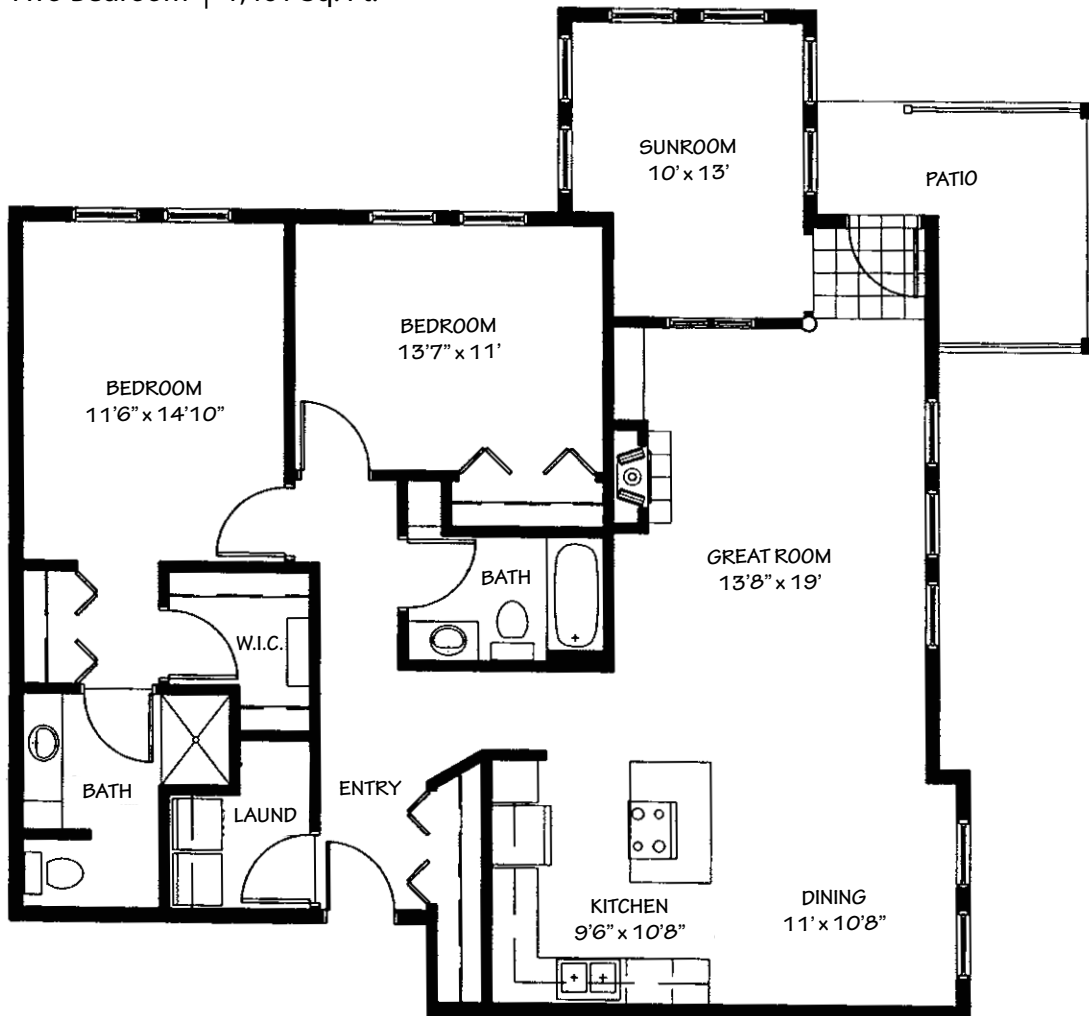
Crosby
One Bedroom | 974 Sq. Ft.



Kearney
Two Bedroom | 1,369 Sq. Ft.

Wahlers

Two Bedroom | 1,461 Sq. Ft.



Boutwells Landing

Brownstones
651-275-5000

Floor plans, features and amenities are subject to change without notice. Stated dimensions and square footage are approximate. Additional floor plans may be available. Please ask about availability.

Reminiscent of historic row-style homes, the Brownstones feature one and two bedroom floor plans to blend gracious design and inviting style. This exceptional living option provides you with privacy, independence, and the freedom to pursue a life limited only by the number of hours in a day.

Distinctive Details

- Choice of one or two bedroom home
- Bright, open floor plans emphasize spacious rooms with nine foot ceilings
- Gas fireplace
- Kitchen with oak cabinetry, refrigerator, stove, dishwasher, microwave and garbage disposal
- Walk-in closets
- Convenient in-home laundry with full size washer and dryer
- Individually controlled heat and air-conditioning
- Sunroom and private deck or patio in most homes

Monthly Rental Fee

Brownstone	Sq. Ft.	Entrance Deposit	Rate
One Bedroom	974	\$70,300	\$2,165
Two Bedroom	1,266–1,520	\$92,300–\$109,500	\$2,830–\$3,405

The entrance deposit reduces the monthly fee and is 100% refundable. Ask about our “Monthly Fee Without Entrance Deposit” option.



Pricing subject to change. Residency agreement available upon request.



651-275-5000

5600 Norwich Parkway
Oak Park Heights, MN 55082

Boutwells.org

Due to COVID-19 or other future circumstance, some features may be temporarily unavailable or offered in a different way. We anticipate features will become available in original form once it is prudent to do so. Presbyterian Homes & Services (PHS) communities comply with applicable federal civil rights laws and do not discriminate on the basis of race, color, national origin, age, disability or sex.

PresHomes.org

Español (Spanish): Llame al 1-844-558-6125

Hmoob (Hmong): Hu rau 1-844-558-6125

Tagalog (Filipino): Tumawag sa 1-844-558-6125

Professional management by PHS Management, LLC © 2021 Presbyterian Homes and Services
All faiths welcome. Equal housing opportunity.

Living Options

- Townhomes
- Row-style homes
- Senior apartments
- Assisted living apartments
- Assisted living memory care
- Transitional care
- Care center
- Care center memory care

 **presbyterian
homes & services**
freedom to live well®