



# Boutwells Landing

The Terrace

Senior Apartments

# Welcome to Boutwells Landing

At Boutwells Landing, your ideal residence is complemented by an assortment of conveniences and amenities to enrich your life.

Enjoy maintenance-free living and comfortable, convenient floor plans. Regardless of which plan you choose, it's sure to reflect your sense of style as you add your own personal touch.

## Included Amenities

- Telephone service
- Basic cable television service
- Utilities (heat, electric, central air-conditioning, water, sewer, and trash)
- Continental breakfast six days/week
- Monthly dining credit
- Wings® wellness intellectually stimulating programs, spiritual care services, group fitness classes, fitness center with pool, volunteer opportunities
- Professional on-site staff
- Pastoral care
- Health and wellness clinic
- Designated complimentary transportation to shopping and outings
- Access to Town Center amenities and programs
- Campus information channel
- Month-to-month residency agreement
- Property tax and building insurance
- Apartment and building maintenance
- Lawn care and snow removal
- Priority access to other Presbyterian Homes & Services living and care options based on availability
- Smoke-free community

## Other Conveniences

*Additional fees may apply*

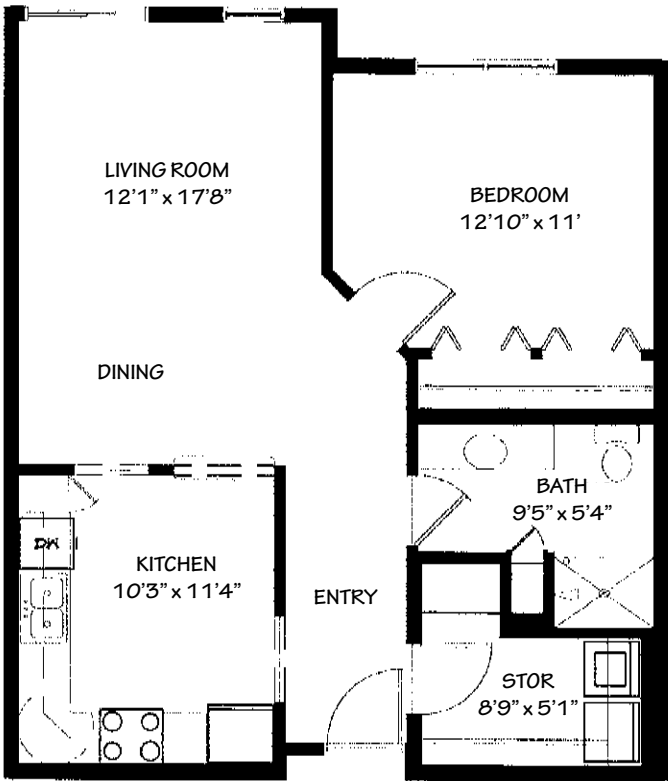
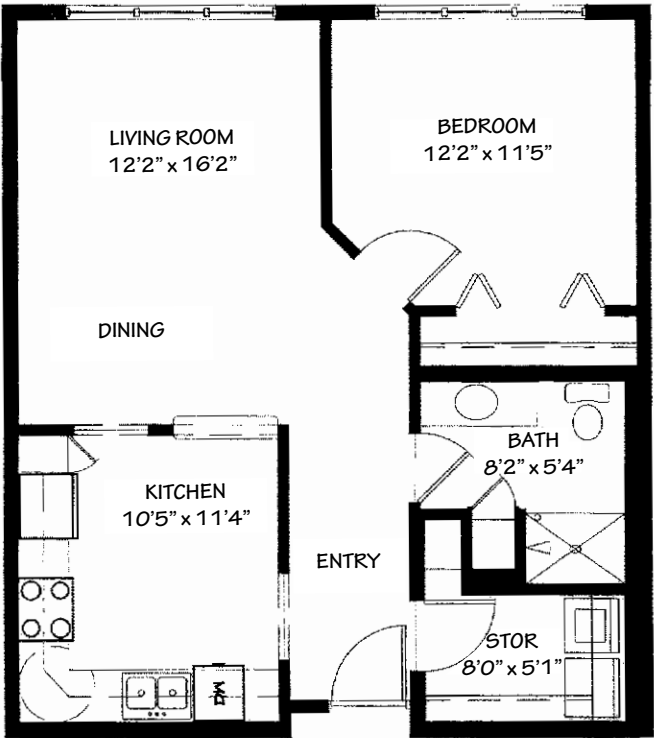
- Additional restaurant-style dining — including meal delivery
- Additional housekeeping
- Transportation for shopping and outings
- Additional cable channels
- Caller ID, call waiting and voicemail
- Certified personal trainers
- Home care and hospice services available through Optage®
- Guest suites
- Additional storage
- Underground heated parking
- On-site educational programs
- Pets are welcome (guidelines apply)
- Outpatient therapy — physical, occupational and speech therapy



# Sample Floor Plans

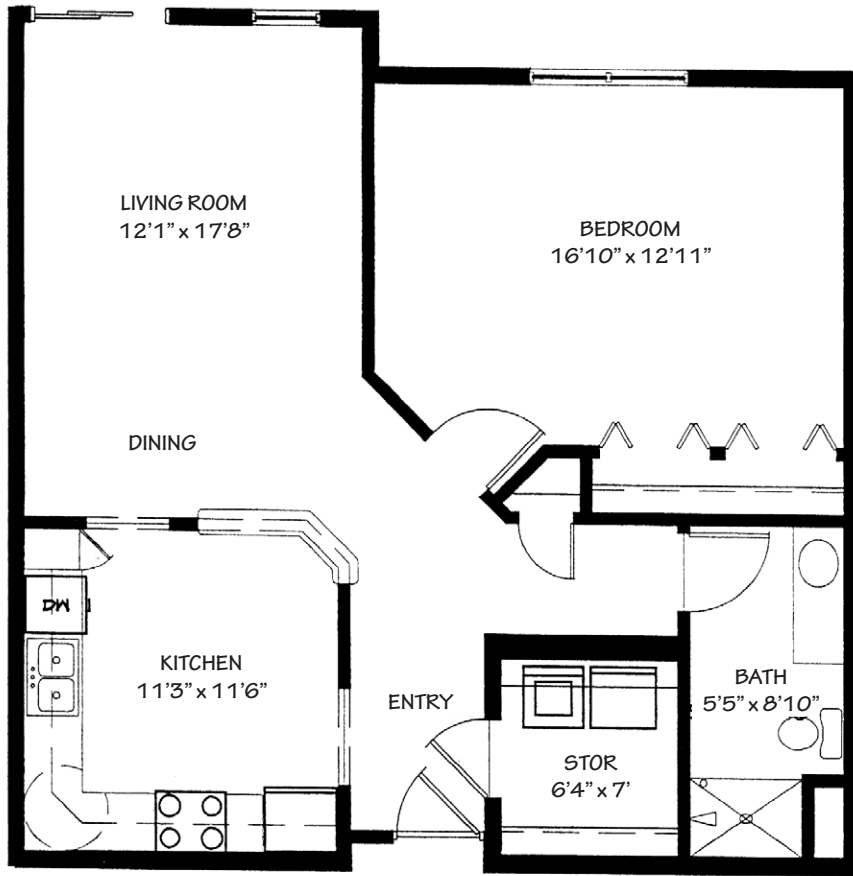
## Carli

One Bedroom | 734 Sq. Ft.



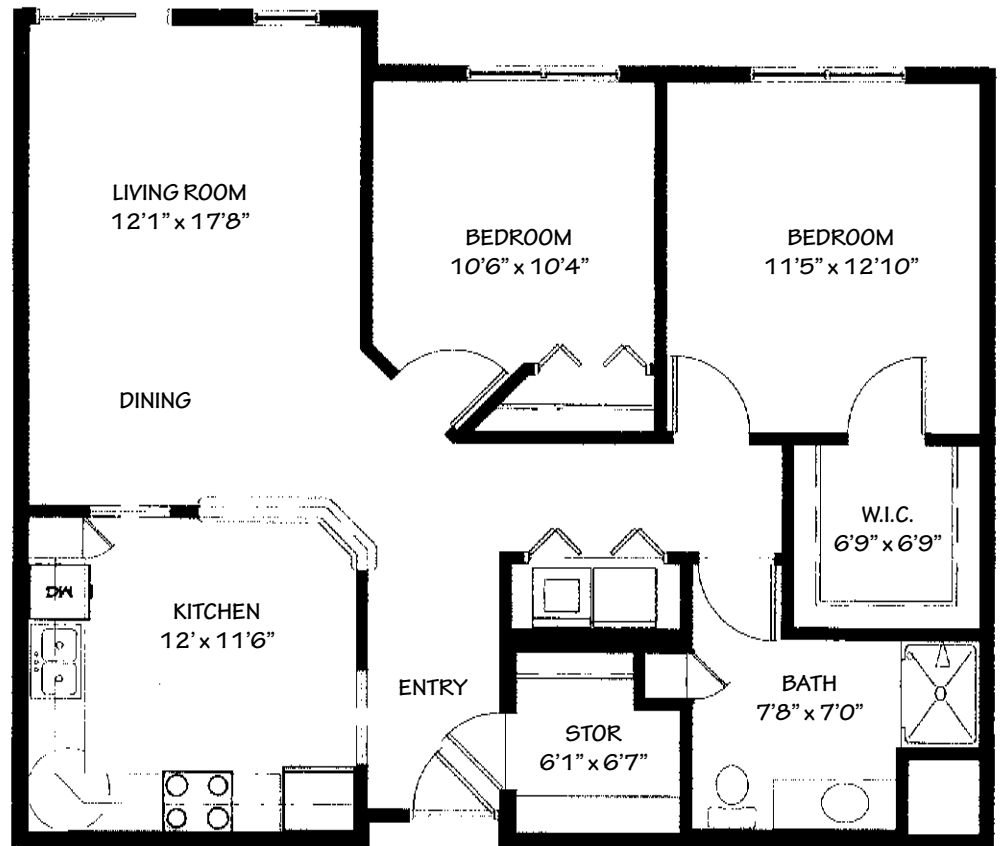
## Easton

One Bedroom | 762 Sq. Ft.



## Holcombe

One Bedroom | 876 Sq. Ft.



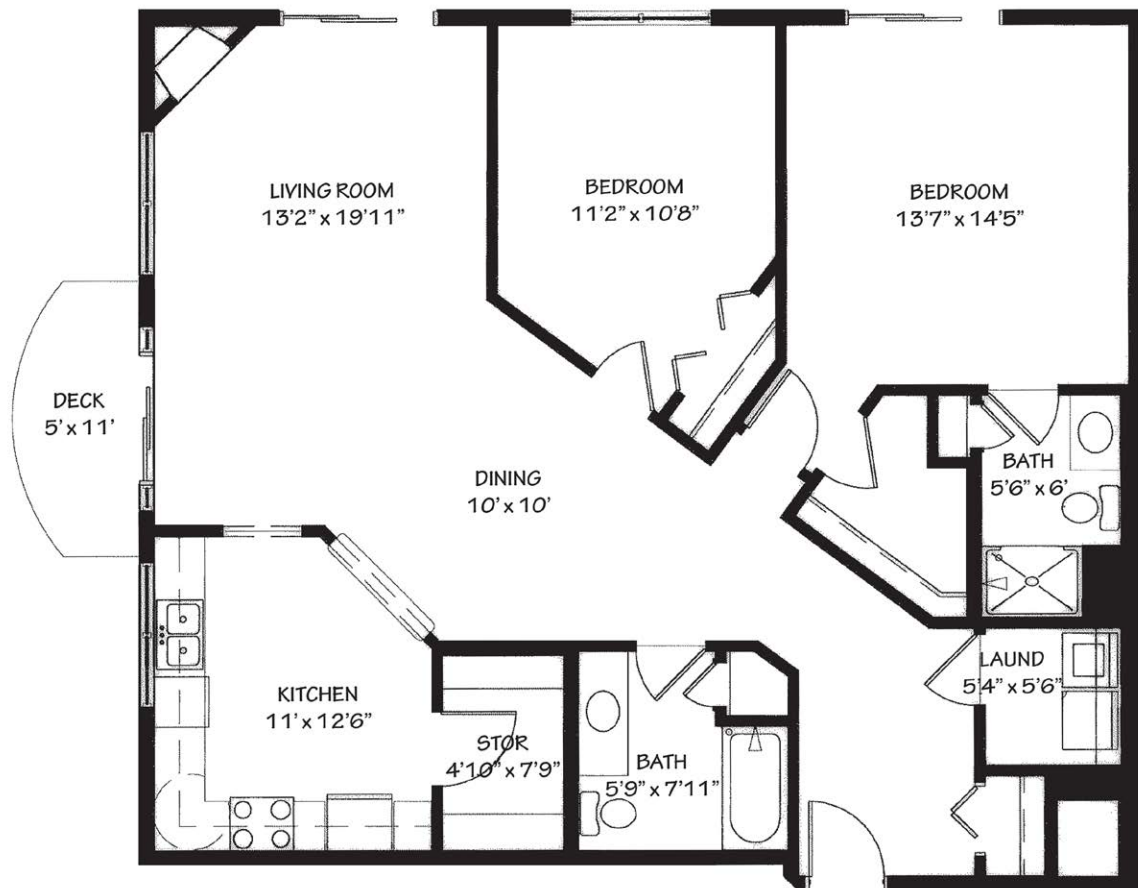
## Kittson

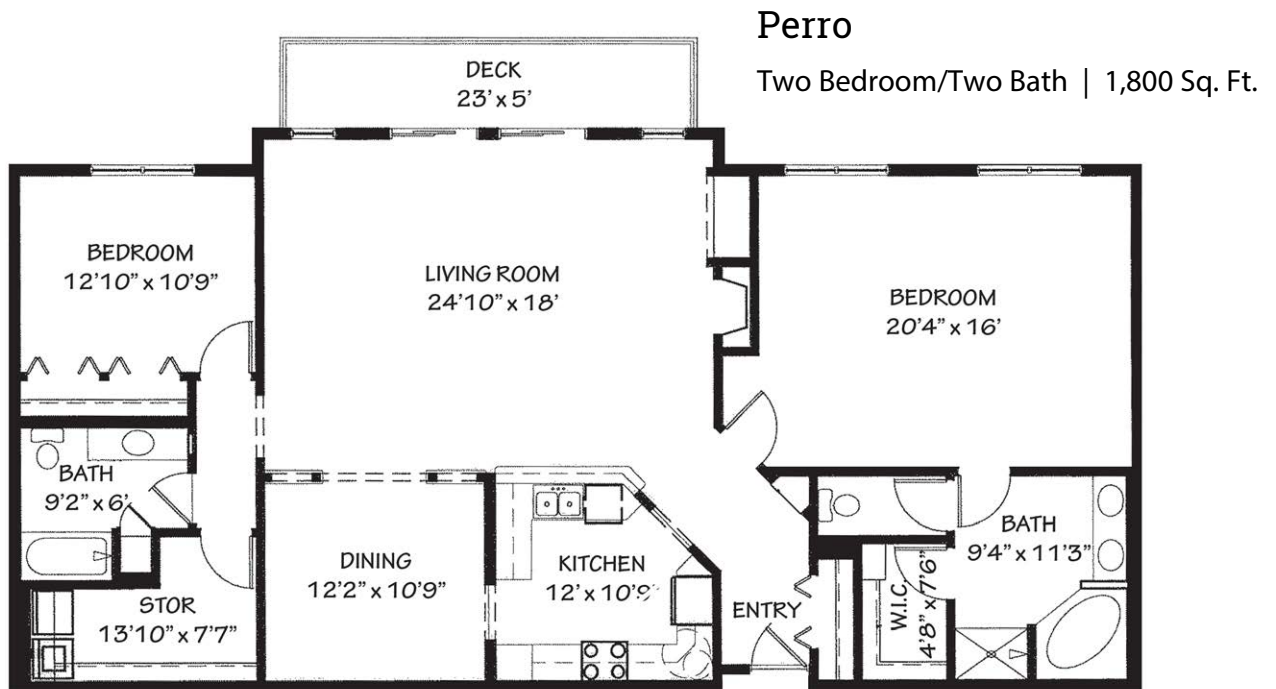
Two Bedroom | 1,032 Sq. Ft.



# Muller

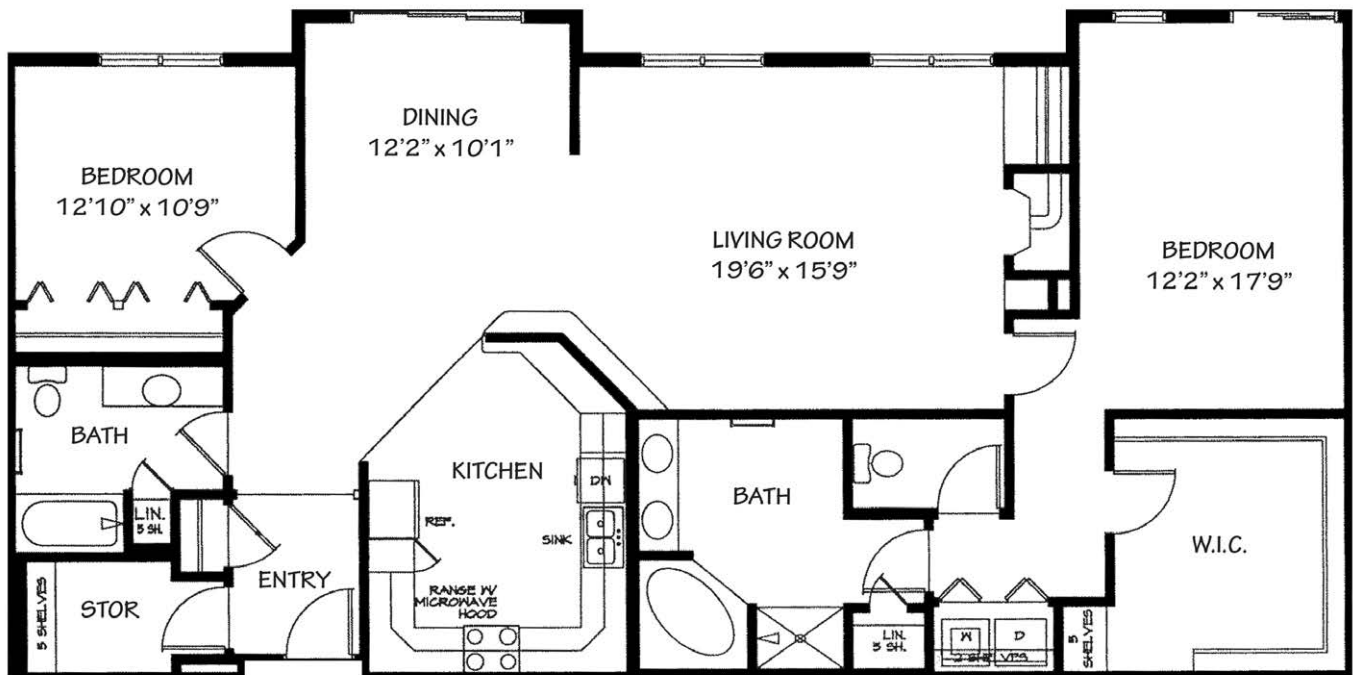
Two Bedroom | 1,339 Sq. Ft.





## Rothafel

Two Bedroom/Two Bath | 1,800 Sq. Ft.



*Floor plans, features and amenities are subject to change without notice. Stated dimensions and square footage are approximate. Additional floor plans may be available. Please ask about availability.*

Our senior apartments offer maintenance-free living and comfortable floor plans with value and convenience. Nicely appointed common areas are well-suited for group events and casual gatherings. Social, recreational and volunteer opportunities help create a sense of community.

## Distinctive Details

- Bright, open floor plans emphasize spacious rooms with nine foot ceilings
- Fully equipped kitchen with refrigerator, stove/self-cleaning oven, dishwasher, microwave and garbage disposal
- Stainless steel appliances and granite countertops
- Custom cabinetry with white trim throughout
- Walk-in storage
- Convenient in-home laundry with full size washer and dryer
- Individually controlled heat and central air conditioning
- Select apartments include a deck or patio

## Monthly Rental Fee

Apartment	Sq. Ft.	Entrance Deposit	Rate
One Bedroom	734–929	\$56,600–\$74,200	\$2,145–\$2,720
Two Bedroom	1,032–2,081	\$85,700–\$159,500	\$2,995–\$5,980

The entrance deposit reduces the monthly fee and is 100% refundable. Ask about our “Monthly Fee Without Entrance Deposit” option.



*Pricing subject to change. Residency agreement available upon request.*





**651-275-5000**

5600 Norwich Parkway  
Oak Park Heights, MN 55082

**Boutwells.org**

*Due to COVID-19 or other future circumstance, some features may be temporarily unavailable or offered in a different way. We anticipate features will become available in original form once it is prudent to do so. Presbyterian Homes & Services (PHS) communities comply with applicable federal civil rights laws and do not discriminate on the basis of race, color, national origin, age, disability or sex.*

[PresHomes.org](http://PresHomes.org)

Español (Spanish): Llame al 1-844-558-6125

Hmoob (Hmong): Hu rau 1-844-558-6125

Tagalog (Filipino): Tumawag sa 1-844-558-6125

Professional management by PHS Management, LLC © 2021 Presbyterian Homes and Services  
All faiths welcome. Equal housing opportunity.

## Living Options

- Townhomes
- Row-style homes
- Senior apartments
- Assisted living apartments
- Assisted living memory care
- Transitional care
- Care center
- Care center memory care

 **presbyterian  
homes & services**  
*freedom to live well®*