



# Boutwells Landing

Village Homes

Townhomes

# Welcome to Boutwells Landing

At Boutwells Landing, your ideal residence is complemented by an assortment of conveniences and amenities to enrich your life.

Enjoy maintenance-free living and comfortable, convenient floor plans. Regardless of which plan you choose, it's sure to reflect your sense of style as you add your own personal touch.

---

## Included Amenities

- Telephone service
- Basic cable television service
- Utilities (water, sewer, and trash)
- Continental breakfast six days/week
- Monthly dining credit
- Wings® wellness intellectually stimulating programs, spiritual care services, group fitness classes, fitness center with pool, volunteer opportunities
- Professional on-site staff
- Pastoral care
- Health and wellness clinic
- Designated complimentary transportation to shopping and outings
- Access to Town Center amenities and programs
- Campus information channel
- Month-to-month residency agreement
- Property tax and building insurance
- Interior and exterior home maintenance
- Lawn care and snow removal
- Priority access to other Presbyterian Homes & Services living and care options based on availability
- Smoke-free community

## Other Conveniences

*Additional fees may apply*

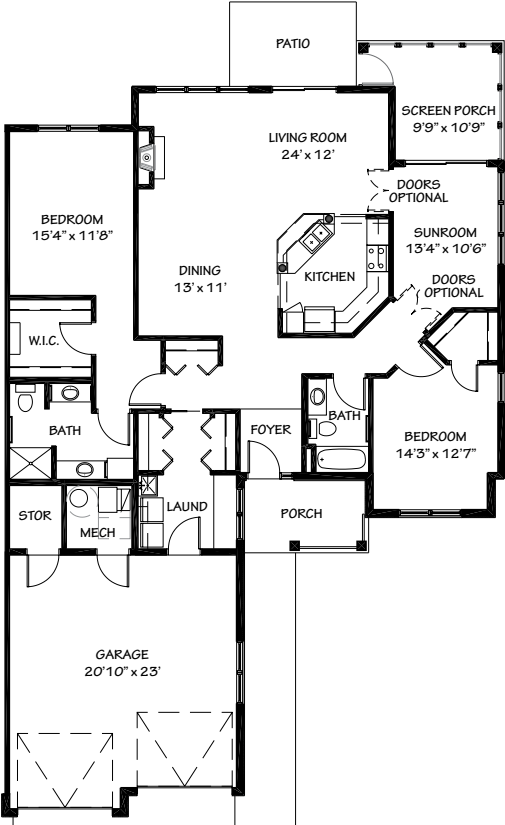
- Additional restaurant-style dining — including meal delivery
- Additional housekeeping
- Utilities (heat, electric, central air-conditioning)
- Transportation for shopping and outings
- Additional cable channels
- Caller ID, call waiting and voicemail
- Certified personal trainers
- Home care and hospice services available through Optage®
- Guest suites
- On-site educational programs
- Pets are welcome (guidelines apply)
- Outpatient therapy — physical, occupational and speech therapy



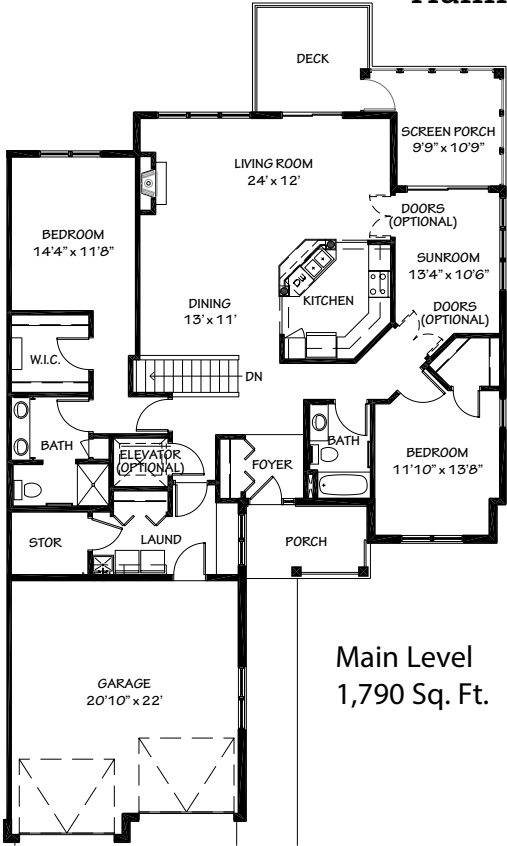


# Sample Floor Plans

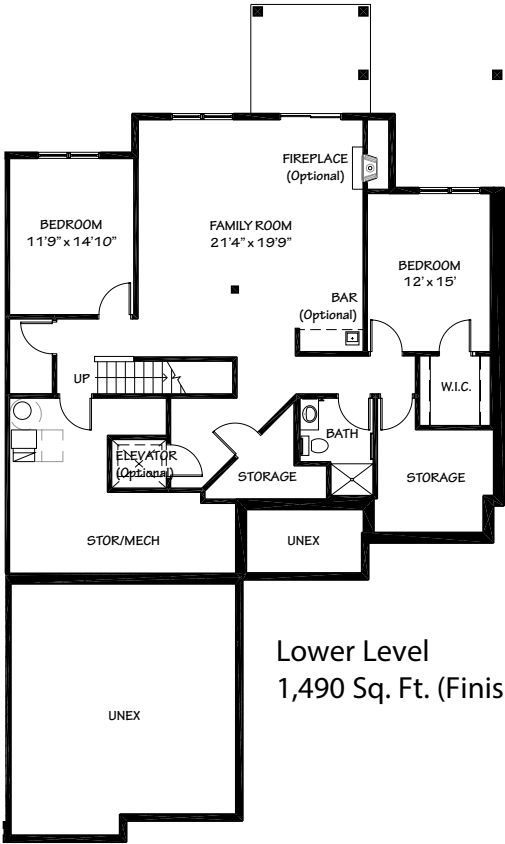
Hamilton Single Level  
1,790 Sq. Ft.



Hamilton Walkout/Lookout



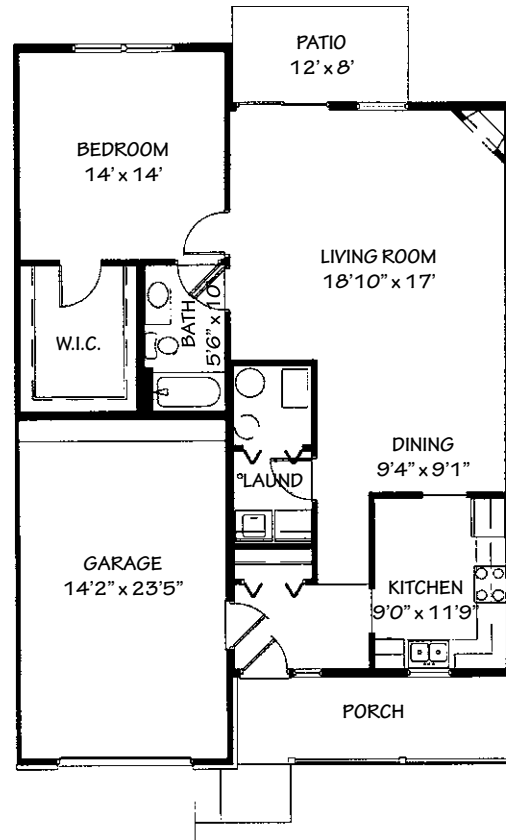
Main Level  
1,790 Sq. Ft.



Lower Level  
1,490 Sq. Ft. (Finished)

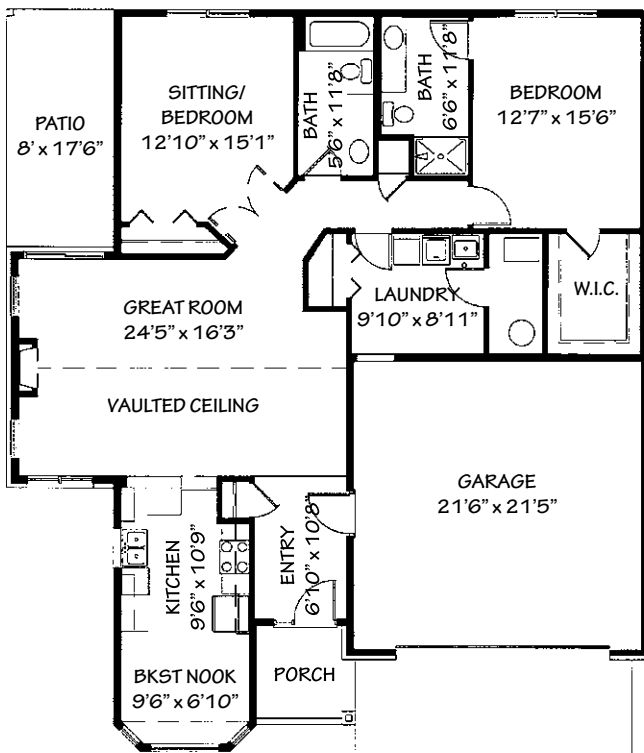
## Afton

Single Level | 1,158 Sq. Ft.



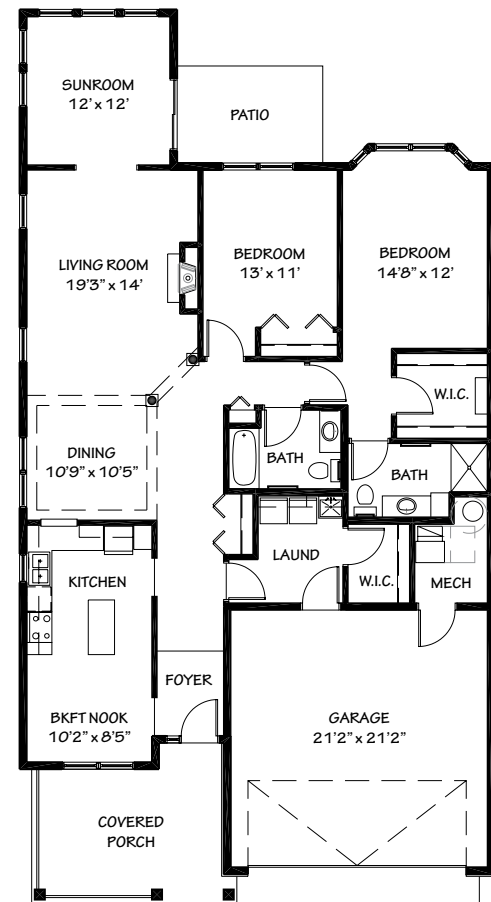
## Hudson

Single Level | 1,603 Sq. Ft.



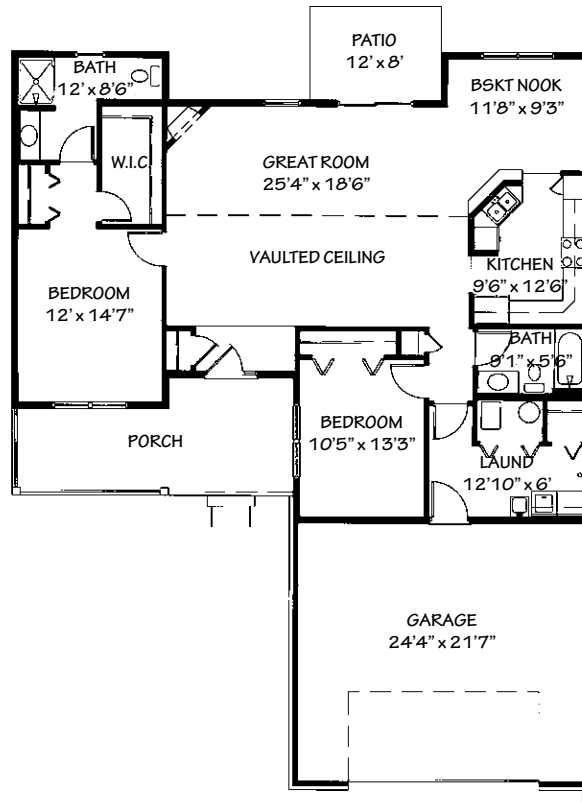
## Wheeler

Single Level | 1,765 Sq. Ft.



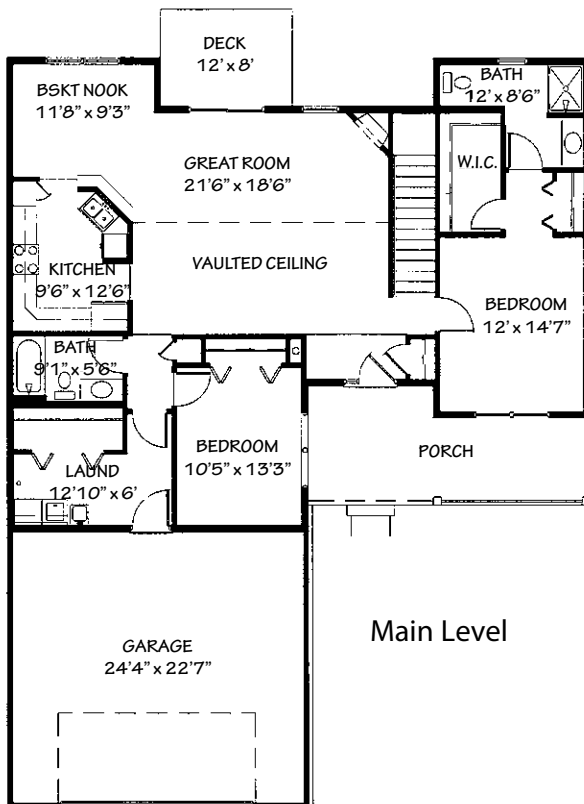
## Lakeland Single Level

1,575 Sq. Ft.

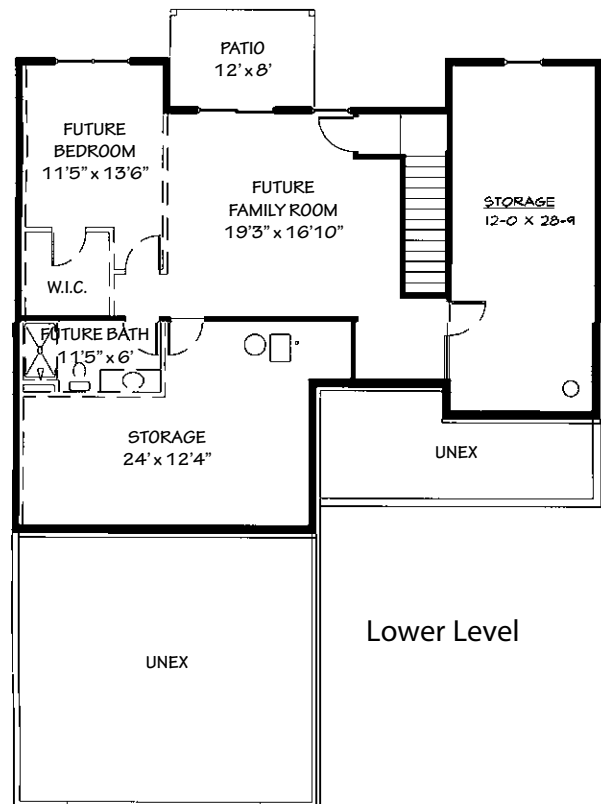


## Lakeland Walkout/Lookout

2,161 Sq. Ft.



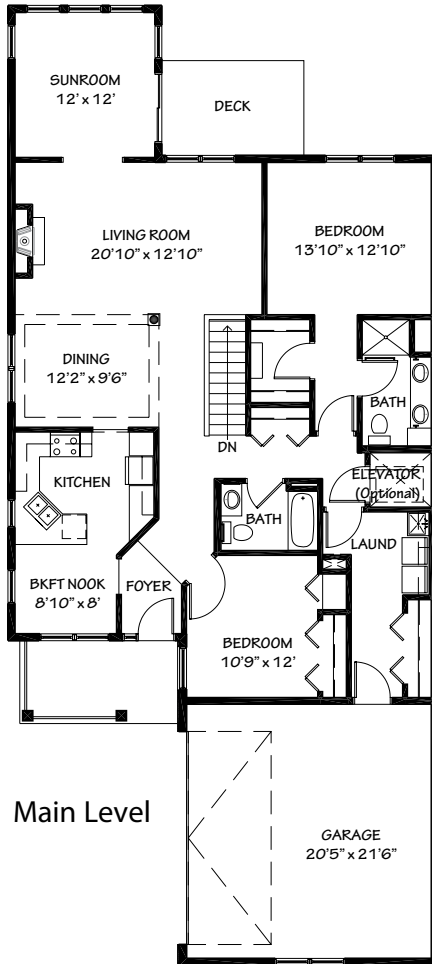
Main Level



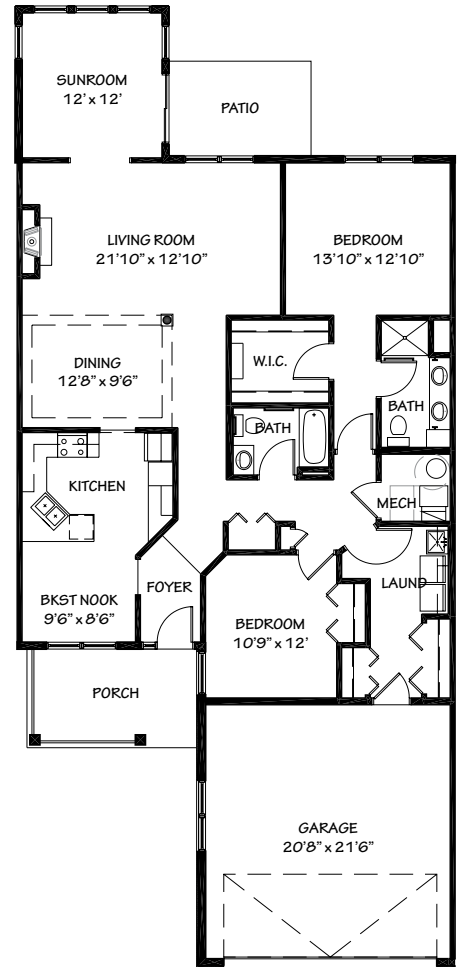
Lower Level

## Dodd Single Level

1,753 Sq. Ft.

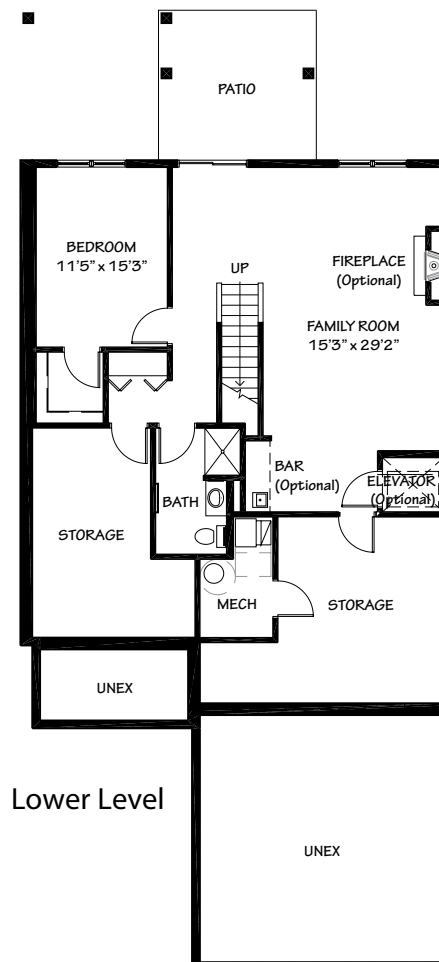


Main Level



## Dodd Walkout/Lookout

2,833 Sq. Ft.



Lower Level

Floor plans, features and amenities are subject to change without notice. Stated dimensions and square footage are approximate. Additional floor plans may be available. Please ask about availability.

Casual elegance and design combine to make every townhome a gracious retreat. Well-appointed, attached homes with private exterior entrances maintain your high level of independence while providing all the benefits of a community setting without the hassle of household maintenance.

## Distinctive Details

- Main level living, some with lower level walkout or lookout (side-by-side or detached homes)
- Bright, open floor plans emphasize spacious rooms with nine foot or vaulted ceilings
- Central air conditioning
- Gas fireplace
- Telephone and cable outlets in all bedrooms and living room
- Convenient in-home laundry with full size washer and dryer
- Attached garage with remote opener
- Fully-equipped kitchen with raised panel oak cabinetry, Formica countertops, refrigerator, microwave, stove/self-cleaning oven, dishwasher and garbage disposal
- Full bath with tub, shower and grab bar
- Walk-in storage
- Four-season or screen porch in select models
- Private patio and/or deck

## Monthly Rental Fee

Townhome	Sq. Ft.	Entrance Deposit	Rate
One Bedroom	1,158	\$74,900	\$2,095
Two Bedroom	1,469–1,682	\$99,500–\$112,700	\$2,860–\$3,280
Two Bedroom Plus	1,753–2,475	\$131,100–\$211,400	\$3,705–\$5,990
Three Bedroom Plus	2,161–4,703	\$133,600–\$244,200	\$3,495–\$6,055

The entrance deposit reduces the monthly fee and is 100% refundable. Ask about our "Monthly Fee Without Entrance Deposit" option.



*Pricing subject to change. Residency agreement available upon request.*





**651-275-5000**

5600 Norwich Parkway  
Oak Park Heights, MN 55082

**Boutwells.org**

*Due to COVID-19 or other future circumstance, some features may be temporarily unavailable or offered in a different way. We anticipate features will become available in original form once it is prudent to do so. Presbyterian Homes & Services (PHS) communities comply with applicable federal civil rights laws and do not discriminate on the basis of race, color, national origin, age, disability or sex.*

[PresHomes.org](http://PresHomes.org)

Español (Spanish): Llame al 1-844-558-6125

Hmoob (Hmong): Hu rau 1-844-558-6125

Tagalog (Filipino): Tumawag sa 1-844-558-6125

Professional management by PHS Management, LLC © 2021 Presbyterian Homes and Services  
All faiths welcome. Equal housing opportunity.

## Living Options

- Townhomes
- Row-style homes
- Senior apartments
- Assisted living apartments
- Assisted living memory care
- Transitional care
- Care center
- Care center memory care

 **presbyterian  
homes & services**  
*freedom to live well®*