

# The Terrace

SENIOR APARTMENTS



 **HEARTWOOD**  
A SENIOR LIVING COMMUNITY

# WELCOME TO HEARTWOOD

At Heartwood, your ideal residence is complemented by an assortment of conveniences and amenities to enrich your life.

Enjoy maintenance-free living and comfortable, convenient floor plans. Regardless of which plan you choose, it's sure to reflect your sense of style as you add your own personal touch.

---

## INCLUDED AMENITIES

- Utilities (heat, electric, central air conditioning, water, sewer and trash)
- Telephone service
- Basic cable television service
- Social programs and events
- Pastoral care
- Designated complimentary transportation to shopping and outings
- Controlled entrance
- Health and wellness clinic
- Lawn care and snow removal
- Apartment and building maintenance
- Monitored smoke detector
- Month-to-month residency agreement
- Priority access to other Cuyuna Regional Medical Care Center and Presbyterian Homes & Services living and care options based on availability
- Smoke-free community

## OTHER CONVENIENCES

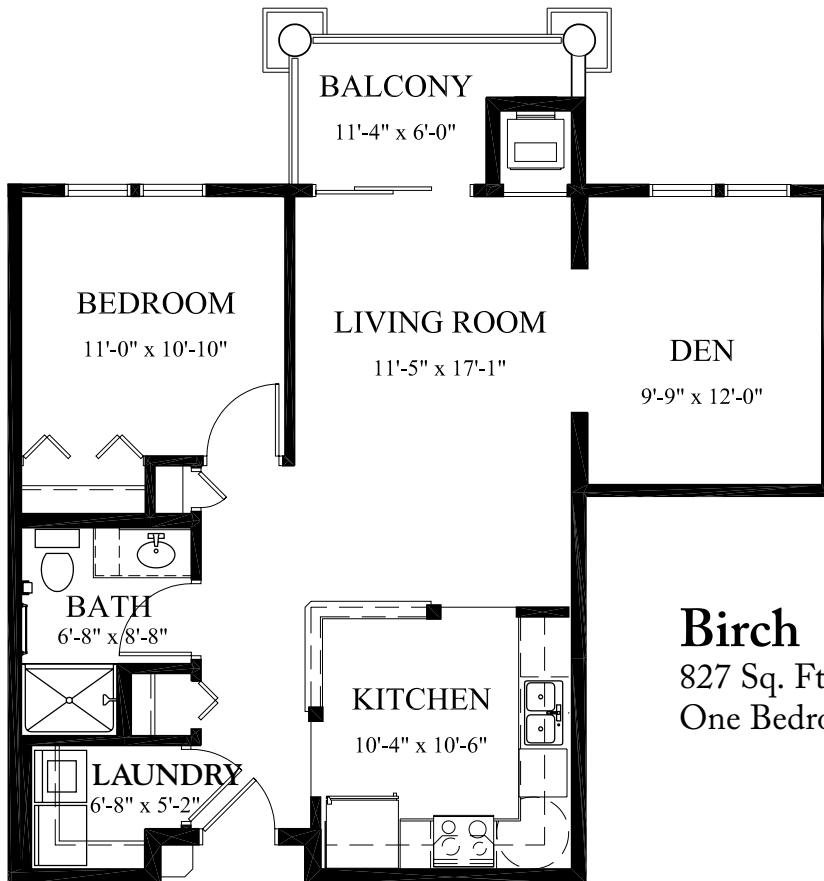
*Additional fees may apply*

- Restaurant-style dining
- Underground heated parking and car wash bay
- Additional storage
- Transportation for shopping and outings
- Housekeeping
- Guest dining
- Guest suites
- On-site laboratory services
- Pharmacy delivery
- Pets are welcome (guidelines apply)



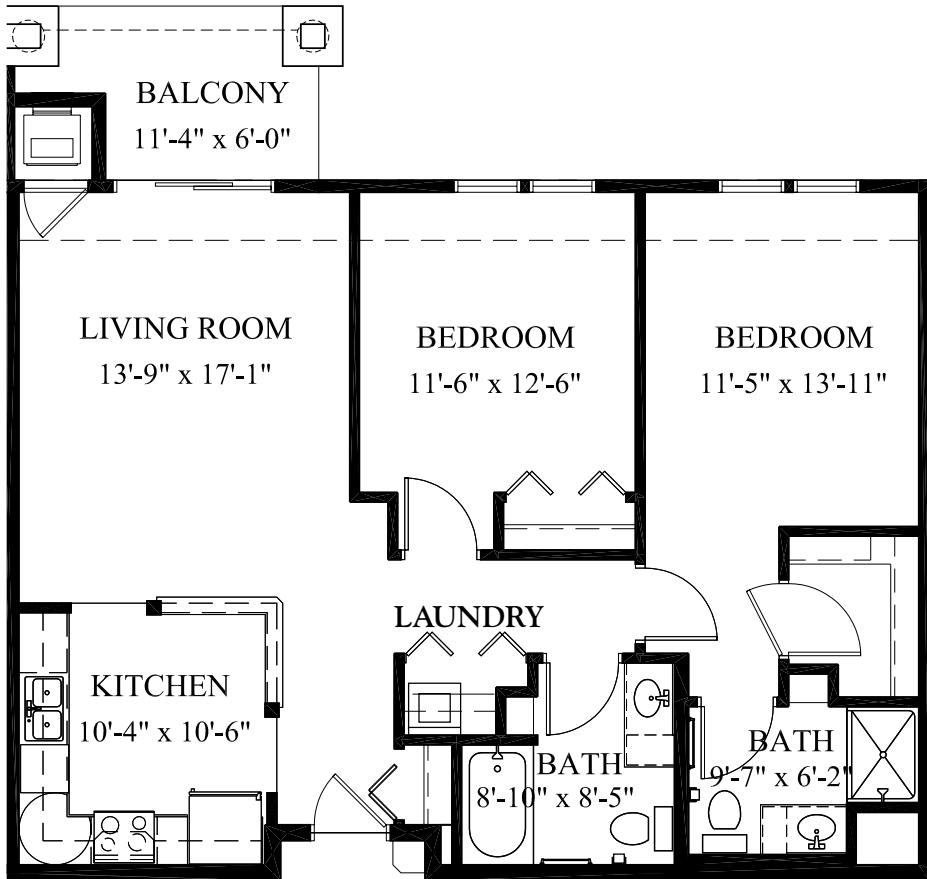
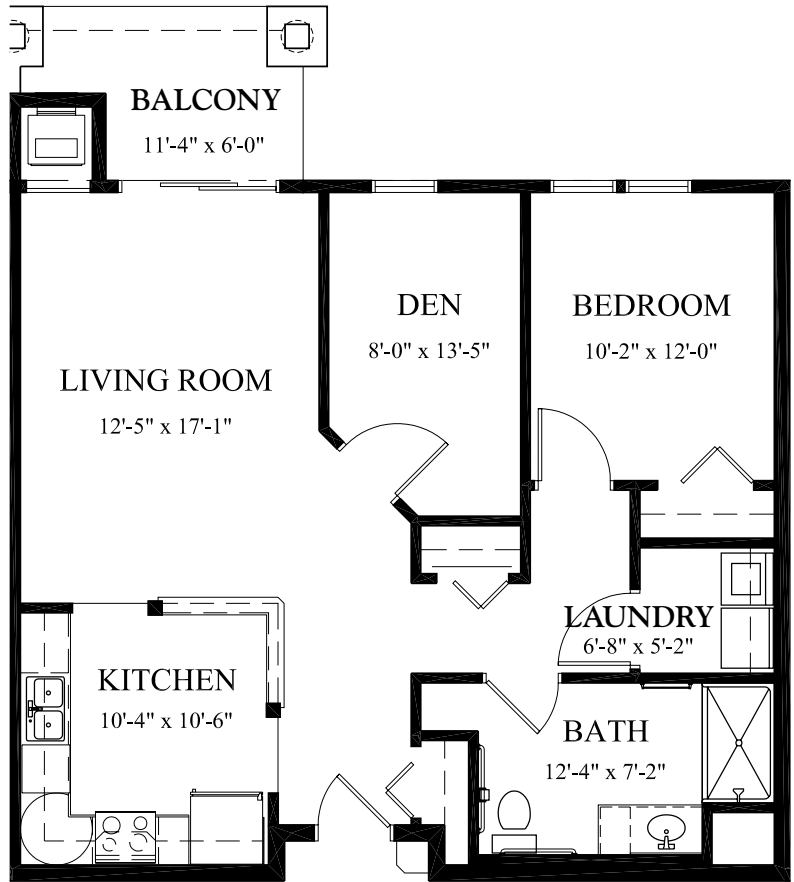
# SAMPLE FLOOR PLANS

**Alder**  
700 Sq. Ft.  
One Bedroom



**Birch**  
827 Sq. Ft.  
One Bedroom/Den

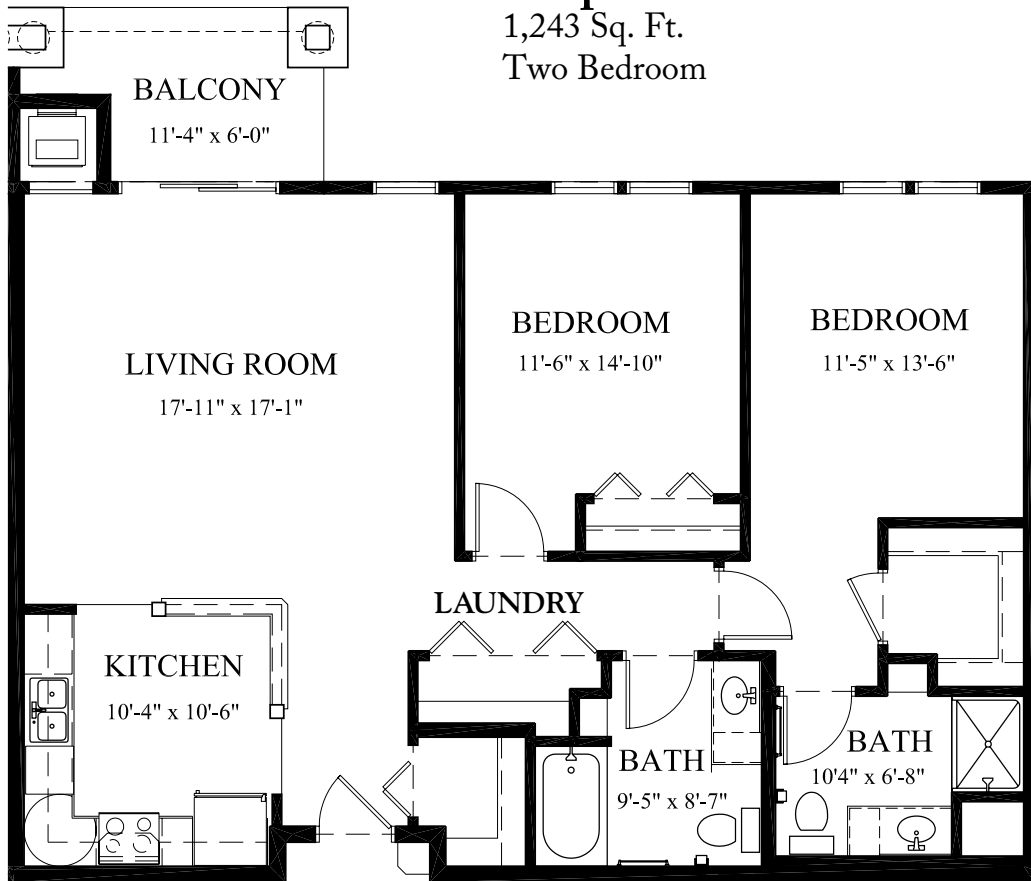
**Elm**  
 945 Sq. Ft.  
 One Bedroom/Den



**Linden**  
 1,123 Sq. Ft.  
 Two Bedroom

# Maple

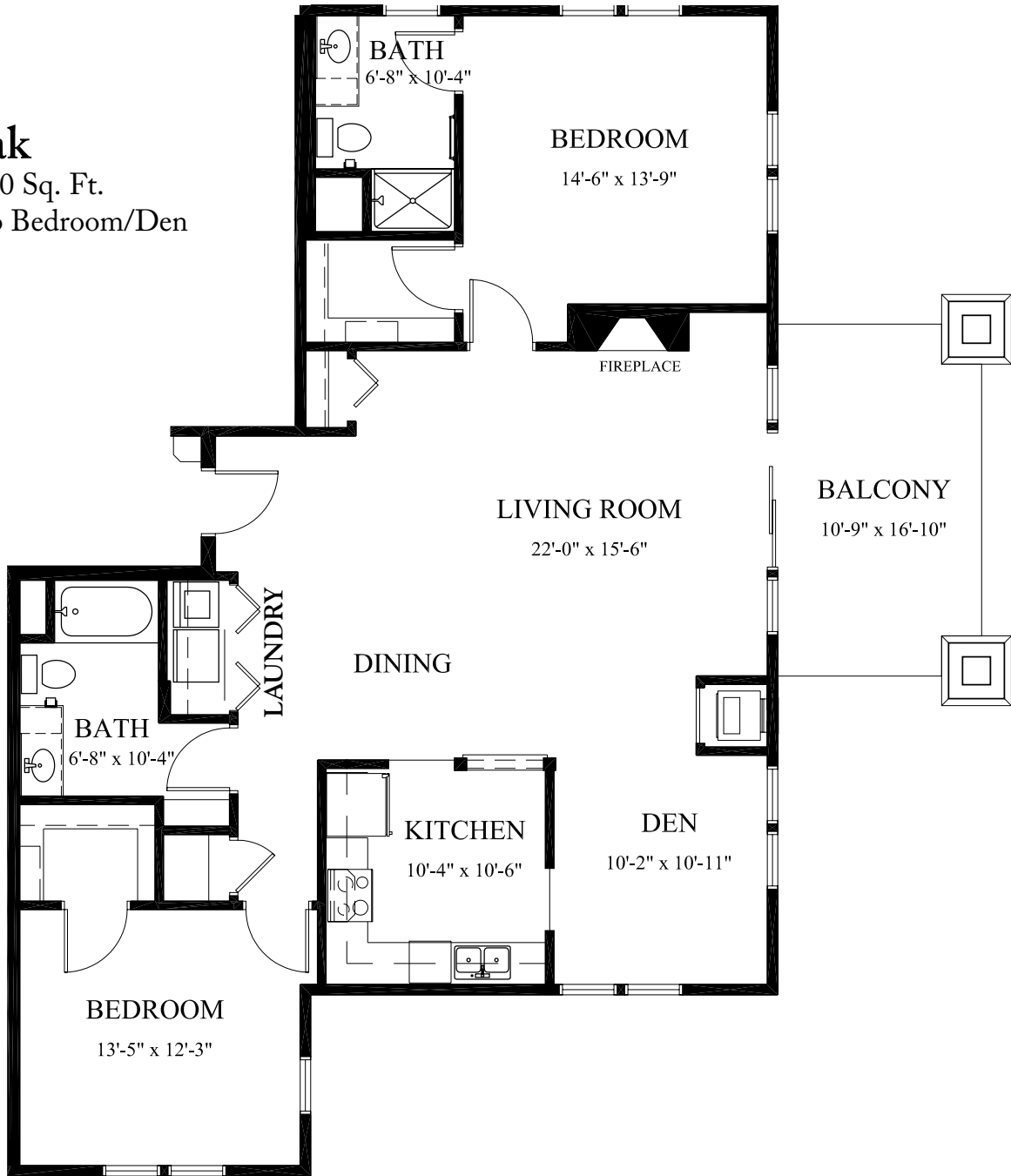
1,243 Sq. Ft.  
Two Bedroom



# Oak

1,550 Sq. Ft.

Two Bedroom/Den



*Floor plans, features and amenities are subject to change without notice. Stated dimensions and square footage are approximate. Additional floor plans may be available. Please ask about availability.*

Our senior apartments offer maintenance-free living and comfortable floor plans with value and convenience. Nicely appointed common areas are well-suited for group events and casual gatherings. Social, recreational and volunteer opportunities help create a sense of community.

## DISTINCTIVE DETAILS

- Bright open floor plans emphasize spacious rooms with nine foot ceilings
- Refrigerator, stove/self-cleaning oven, dishwasher and microwave
- Convenient in-home laundry with washer and dryer
- Patio or balcony
- Blinds on all windows
- Individually controlled heat and central air conditioning
- Bathroom with step-in shower and grab bar
- Gas fireplace and walk-in closets in select apartments

## MONTHLY RENTAL FEE

APARTMENT	SQ. FT.	ENTRANCE DEPOSIT	RATE
One Bedroom	700*-945	\$23,625	\$1,690-\$2,185
Two Bedroom	1,123-1,550	\$28,075-\$38,750	\$2,610-\$3,575

\*Income guidelines apply. The entrance deposit essentially reduces the monthly fee and is 100% refundable.

*Pricing subject to change. Residency agreement available upon request.*





Heartwood is a non-profit senior living community rooted in the shared vision of its two founding organizations, Cuyuna Regional Medical Center and Presbyterian Homes & Services. Both have a decades-rich history of providing progressive, personal care and promoting all aspects of health and well-being for those they serve.

**218-545-8500**

500 Heartwood Drive  
Crosby, MN 56441

**HeartwoodLiving.org**

*Due to COVID-19 or other future circumstance, some features may be temporarily unavailable or offered in a different way. We anticipate features will become available in original form once it is prudent to do so. Presbyterian Homes & Services (PHS) communities comply with applicable federal civil rights laws and do not discriminate on the basis of race, color, national origin, age, disability or sex.*

PresHomes.org

Español (Spanish): Llame al 1-844-558-6125

Hmoob (Hmong): Hu rau 1-844-558-6125

Tagalog (Filipino): Tumawag sa 1-844-558-6125

Professional management by PHS Management, LLC © 2021 Presbyterian Homes and Services  
All faiths welcome. Equal housing opportunity.

## LIVING OPTIONS

- Terrace senior apartments
- Commons assisted living apartments
- Arbor assisted living memory care residence

