



Stair Crest

Assisted Living

Welcome to Stair Crest

For a setting that offers freedom combined with the comfort of knowing supportive services are available, choose The Commons assisted living.

Shape your daily life as you desire with the support of Liberty Personally Designed Living™, an innovative approach to personal care and assistance. Nicely appointed common areas are well-suited for group or casual gatherings, while social and recreational opportunities create a sense of community.

Included Amenities

- Escorts to meals and activities for first 5 days
- Personal care package
- Choice of two meals daily
- Weekly light housekeeping and linen change (resident provides linens)
- Urgent call system
- 24 hour on-site Resident Assistant staffing
- Wings® Wellness: intellectually stimulating programs, spiritual care services, group fitness classes, fitness center, volunteer opportunities
- Campus Pastor
- Basic cable television service
- Telephone service
- Secure Wi-Fi
- Designated complimentary transportation to shopping and outings
- Utilities (heat, electric, central air conditioning, water and sewer)
- Access to Town Center amenities and programs
- Priority access to other Stair Crest and Presbyterian Homes & Services living and care options based on availability
- Smoke-free community



Other Conveniences

Additional fees may apply

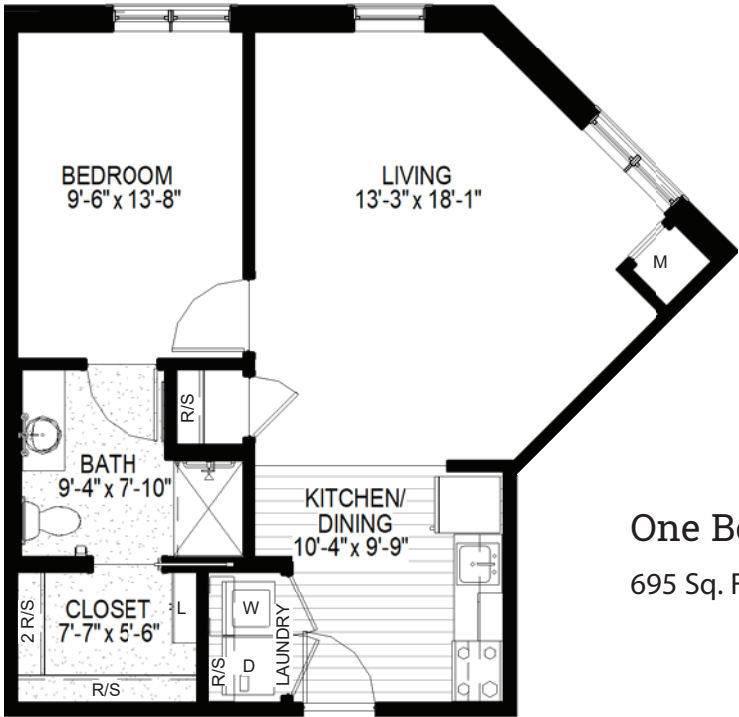
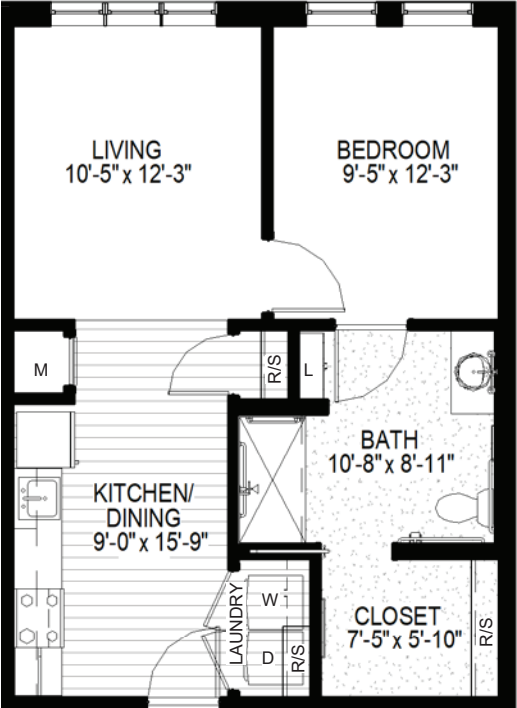
- Second occupant, \$1,230 plus personal care
- Personal care 24 hours a day
- Assistance with arranging transportation to medical and social service appointments
- Assistance with accessing community resources and social services
- Access to designated Physician or Nurse Practitioner
- Specialized diets
- Additional housekeeping
- Guest dining
- Internet
- Laundry service
- Additional storage
- Third meal option
- Pets are welcome (guidelines apply)

Distinctive Details

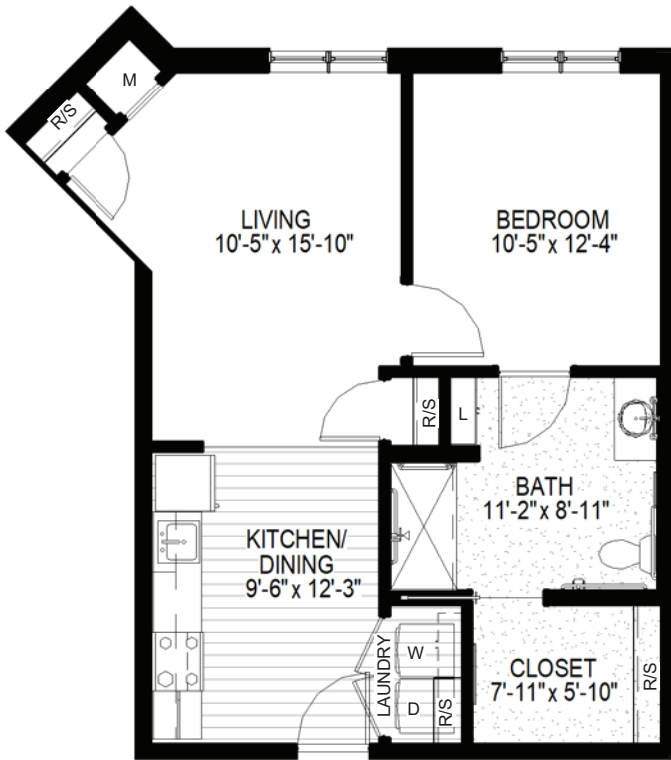
- Spacious studio, one- and two-bedroom apartments
- Bright open floor plans
- Kitchen with refrigerator, stove, oven and microwave
- Thoughtfully-designed bathroom with roll-in shower and grab bar
- Individually controlled heat and central air conditioning
- In-home washer and dryer in select apartments

Sample Floor Plans

One Bedroom D
610 Sq. Ft.



One Bedroom I
695 Sq. Ft.

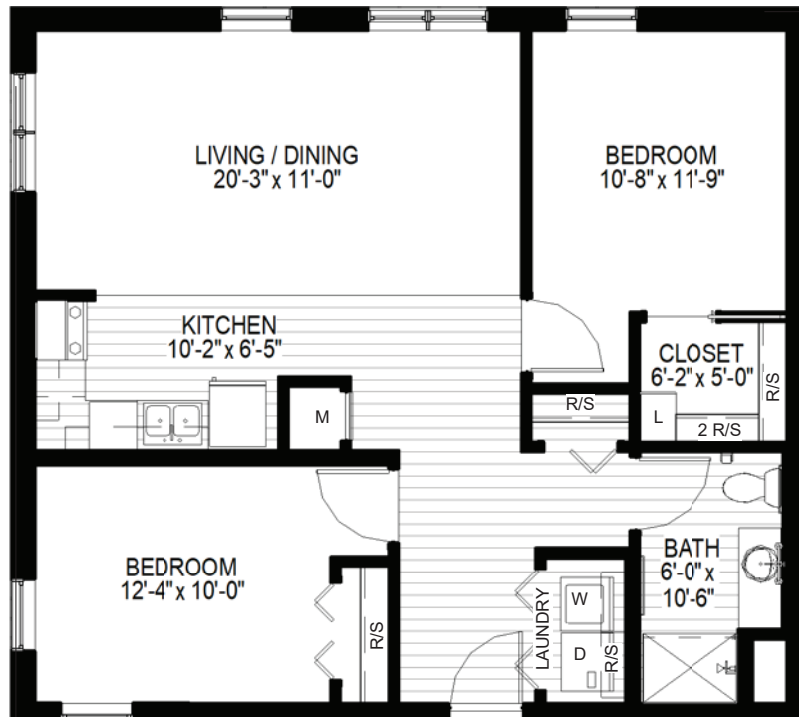


One Bedroom H

665 Sq. Ft.

Two Bedroom A

950 Sq. Ft.



Stair Crest
 Assisted Living
 414-367-2400

Floor plans, features and amenities are subject to change without notice. Stated dimensions and square footage are approximate. Window placement may vary. Additional floor plans may be available. Please ask about availability.

At Stair Crest, we know each individual is just that—an individual. And our services reflect that philosophy. Select from a broad range of options depending on your personal preferences. It's all based on the principle of choice.
And the choice is yours.

Monthly Personal Care Fee Ranges*

Points from Assessment	Monthly Fee
0–9	Included in base rent
10–101	\$430–\$1,720
102–239	\$2,150–\$3,860
240–354	\$4,070–\$4,910
355–492	\$5,120–\$6,170

**The care fee ranges above are for estimating purposes only.*

Included in Your Personal Care Fees:

- Initial and ongoing nursing assessments
- Scheduled nursing hours and on-call nursing available for staff consultation
- Nurse liaison with health care professionals
- Nurse scheduling of lab draws
- Nurse maintaining clinical record information
- Daily reassurance check
- Resident wellness monitoring

Monthly Rental Fee

Apartment	Sq. Ft.	Rate
Studio	510	\$4,500
One Bedroom/ One Bedroom Plus	605-695	\$4835-5,565
Two Bedroom	950	\$5,730

Assisted Living Service Fees

In addition to the monthly rental fee, a monthly personal care fee for assisted living services is required based on the amount of care provided. The following steps help to assess your care needs and guide you through the residency process:

Step 1: Reserve an apartment at Stair Crest. We will help you through the reservation process and provide you with essential information in preparation for the following steps.

Step 2: Schedule an assisted living care assessment appointment. A nurse will meet with you to complete an initial assessment and help create a personalized care plan. The assessment will include a review of your individualized needs and a recommendation of services that could be provided to meet those needs. Each service is assigned a point value and the assessment will give you an estimated total number of points.* To view the care assessment, scan the QR code or visit StairCrest.org and click on "Resident Documents."



Step 3: Schedule a residency agreement appointment. We will review the residency agreement, payment information and other resources with you. Once the residency agreement process is complete, your move-in date will be confirmed.

Pricing subject to change. Residency agreement available upon request.



414-367-2400

S67W14765 Janesville Road
Muskego, WI 53150

StairCrest.org

Living Options

- Senior apartments
- Assisted living
- Assisted living memory care

Due to COVID-19 or other future circumstance, some features may be temporarily unavailable or offered in a different way. We anticipate features will become available in original form once it is prudent to do so. Presbyterian Homes & Services (PHS) communities comply with applicable federal civil rights laws and do not discriminate on the basis of race, color, national origin, age, disability or sex.

PresHomes.org

Español (Spanish): Llame al 1-844-558-6125

Hmoob (Hmong): Hu rau 1-844-558-6125

Tagalog (Filipino): Tumawag sa 1-844-558-6125

Professional management by PHS Management, LLC © 2023 Presbyterian Homes and Services
All faiths welcome. Equal housing opportunity.



 **presbyterian
homes & services**
freedom to live well®