



THE WELLINGTON  
OF SAINT PAUL

TO IMAGINE, INSPIRE AND NURTURE A YOUTHFUL SPIRIT  
IN EVERY OLDER ADULT WE MEET

# Welcome to The Wellington

At The Wellington, your ideal residence is complemented by an assortment of conveniences and amenities to enrich your life.

Enjoy maintenance-free living and comfortable, convenient floor plans. Regardless of which plan you choose, it's sure to reflect your sense of style as you add your own personal touch.

---

## Included Amenities

- Month-to-month residency agreement
- Property tax and building insurance
- Apartment and building maintenance
- Lawn care and snow removal
- Smoke-free living environment
- Controlled entrance
- Community room
- Laundry facilities on each floor
- Library
- Fitness Room
- Elevator
- Outdoor patio
- Outdoor terrace
- Outdoor gardens
- Walking paths and bike trails
- Close to bus line
- On-site professional management
- Priority access to other Presbyterian Homes & Services living and care options based on availability

## Other Conveniences

*Additional fees may apply*

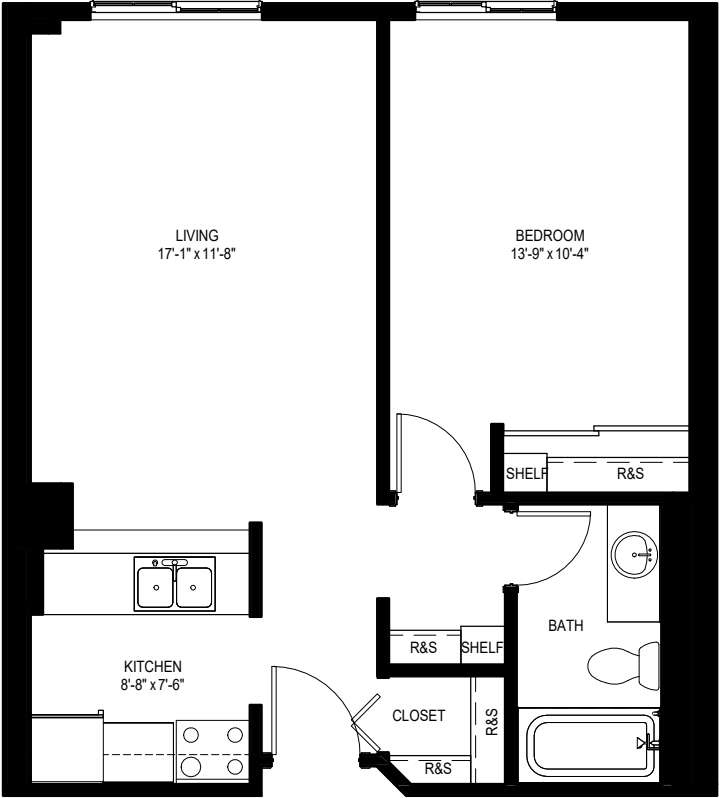
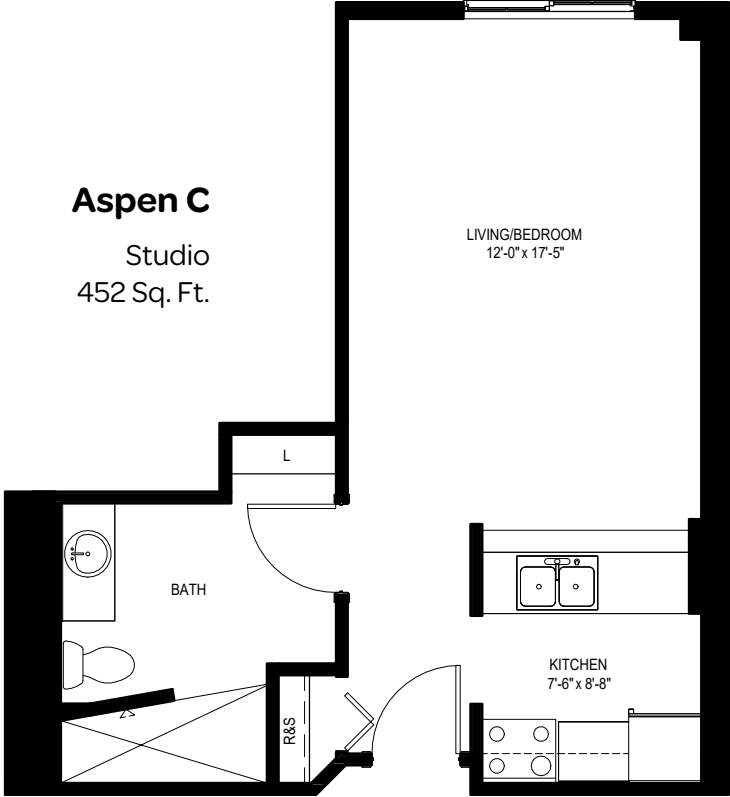
- Outdoor garage parking  
*(when available)*
- Dining options available through Optage®
- Home care and hospice services available through Optage®
- Telephone service
- Television service
- Internet service
- Small pets welcome  
*(guidelines apply)*



# Sample Floor Plans

## Aspen C

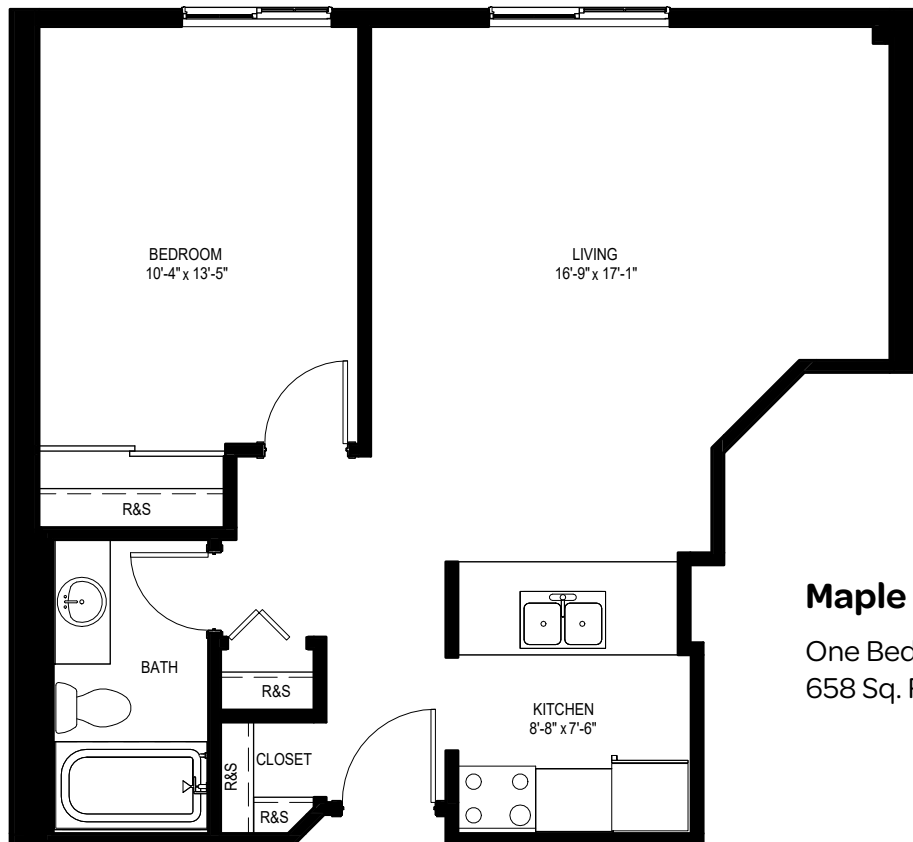
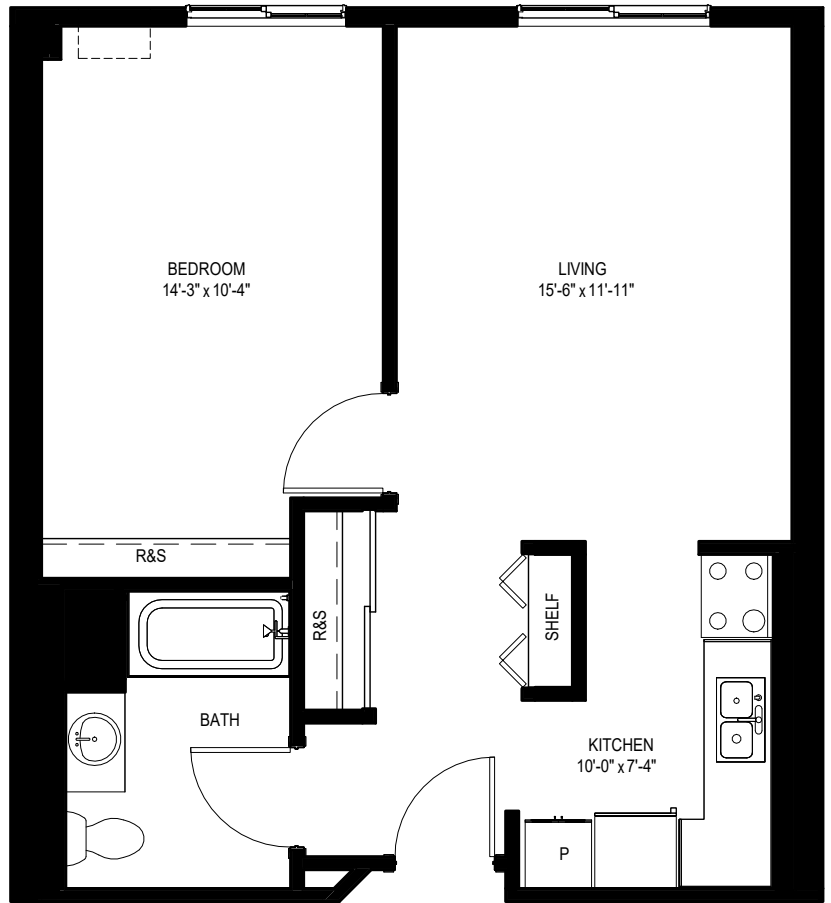
Studio  
452 Sq. Ft.



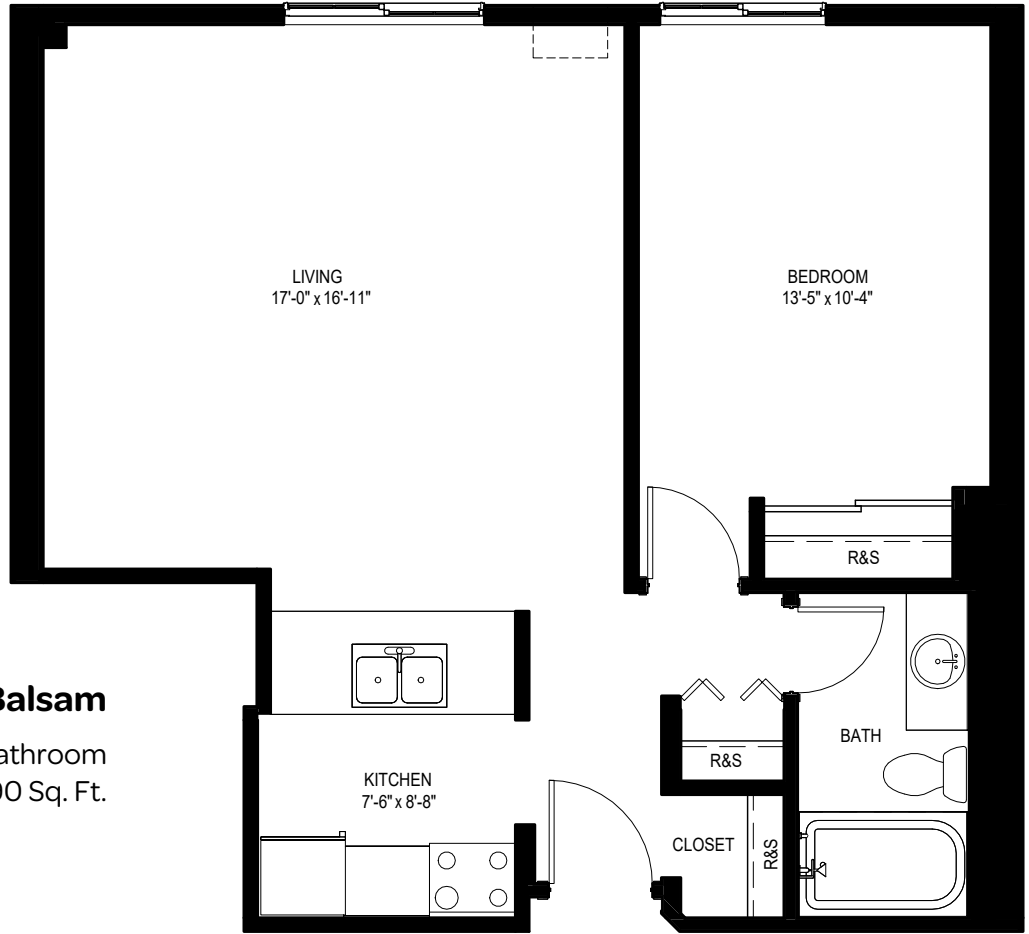
## Pine

One Bedroom | One Bathroom  
621 Sq. Ft.

**Elm**  
 One Bedroom | One Bathroom  
 621 Sq. Ft.



**Maple**  
 One Bedroom | One Bathroom  
 658 Sq. Ft.



LIVING  
17'-0" x 16'-11"

BEDROOM  
13'-5" x 10'-4"

**Balsam**

One Bedroom | One Bathroom  
690 Sq. Ft.

KITCHEN  
7'-6" x 8'-8"

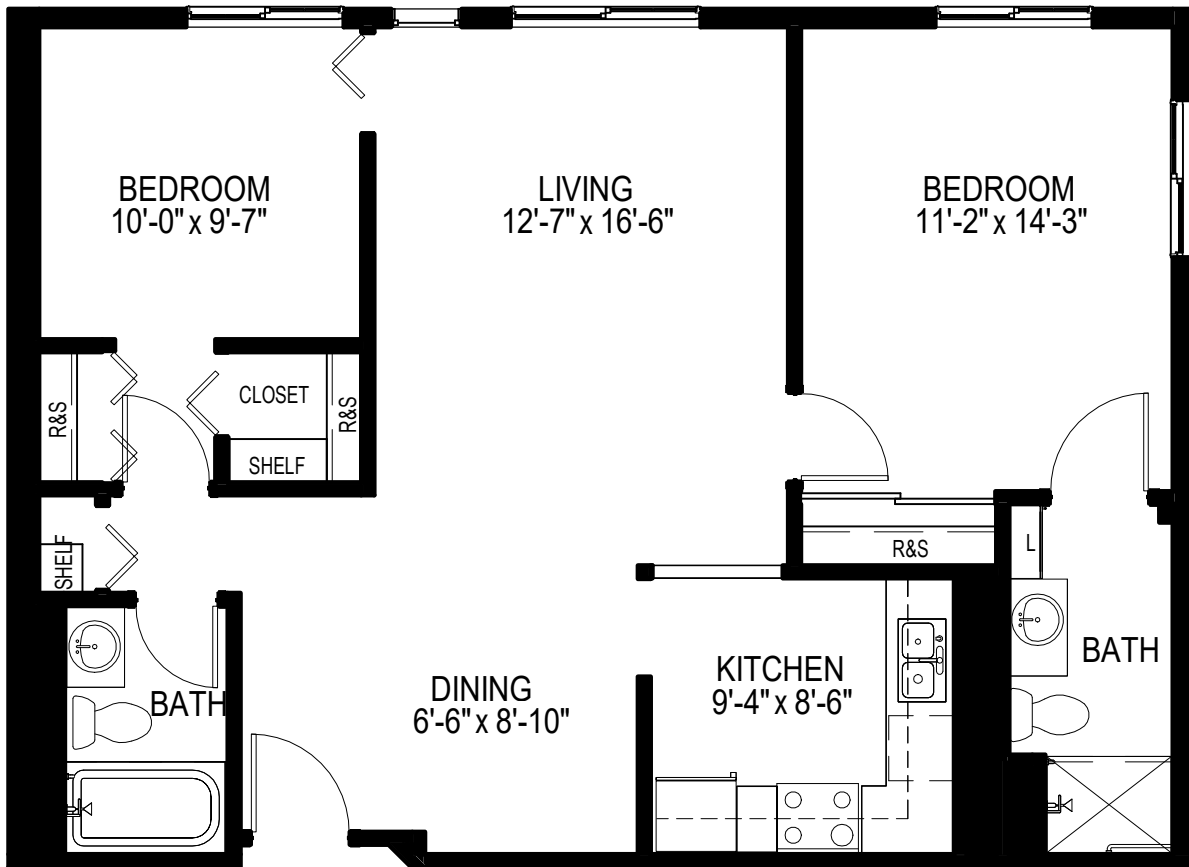
BATH

CLOSET

R&S

R&S

R&S



## Birch

Two Bedroom | Two Bathroom  
924 Sq. Ft.

*Floor plans, features and amenities are subject to change without notice. Stated dimensions and square footage are approximate. Additional floor plans may be available. Please ask about availability.*



Our senior apartments offer maintenance-free living and comfortable floor plans with value and convenience. Nicely appointed common areas are well-suited for group events and casual gatherings. Social, recreational and volunteer opportunities help create a sense of community.

## Distinctive Details

- A variety of unique floor plans that are spacious but manageable
- Full kitchen with refrigerator, stove, and microwave
- Light, natural decor
- Ample storage in cabinets and closets
- Blinds on all windows
- Individually controlled heat and wall air conditioning
- Safety grab bars in bathrooms
- Large windows allowing for natural light

## Monthly Rental Fee

Apartment	Sq. Ft.	Rate
Studio	408–500	\$799–\$829
One Bedroom	600–690	\$1,029–\$1,229
Two Bedroom	775–1,247	\$1,279–\$1,799

*Pricing subject to change. Residency agreement available upon request.*







**651-699-2664**

2235 Rockwood Avenue  
Saint Paul, MN 55116

**TheWellingtonPHS.org**



**THE WELLINGTON**  
OF SAINT PAUL

*Due to COVID-19 or other future circumstance, some features may be temporarily unavailable or offered in a different way. We anticipate features will become available in original form once it is prudent to do so. Presbyterian Homes & Services (PHS) communities comply with applicable federal civil rights laws and do not discriminate on the basis of race, color, national origin, age, disability or sex.*

[AvinitySeniorLiving.org](http://AvinitySeniorLiving.org)

Español (Spanish): Llame al 1-844-558-6125  
Hmoob (Hmong): Hu rau 1-844-558-6125  
Tagalog (Filipino): Tumawag sa 1-844-558-6125



Professional management by Avinity. Avinity is a shared ministry of The Avinity Foundation and Presbyterian Homes & Services. © 2022 Avinity. All faiths welcome. Equal housing opportunity.



4/24