



Echo Ridge
Senior Apartments

Welcome to Echo Ridge

At Echo Ridge, your ideal residence is complemented by an assortment of conveniences and amenities to enrich your life.

Enjoy maintenance-free living and comfortable, convenient floor plans. Regardless of which plan you choose, it's sure to reflect your sense of style as you add your own personal touch.

Included Amenities

- Utilities (heat, central air conditioning, water, sewer, and trash)
- Controlled entrance
- Cable television service
- Pastoral care
- Wings® wellness intellectually stimulating programs, spiritual care services, group fitness classes, fitness center, volunteer opportunities
- Designated complimentary transportation to shopping and outings
- Health and wellness clinic
- Laundry facilities
- Month-to-month residency agreement
- Property tax and building insurance
- Apartment and building maintenance
- Lawn care and snow removal
- Priority access to other Presbyterian Homes & Services living and care options based on availability
- Smoke-free community

Other Conveniences

Additional fees may apply

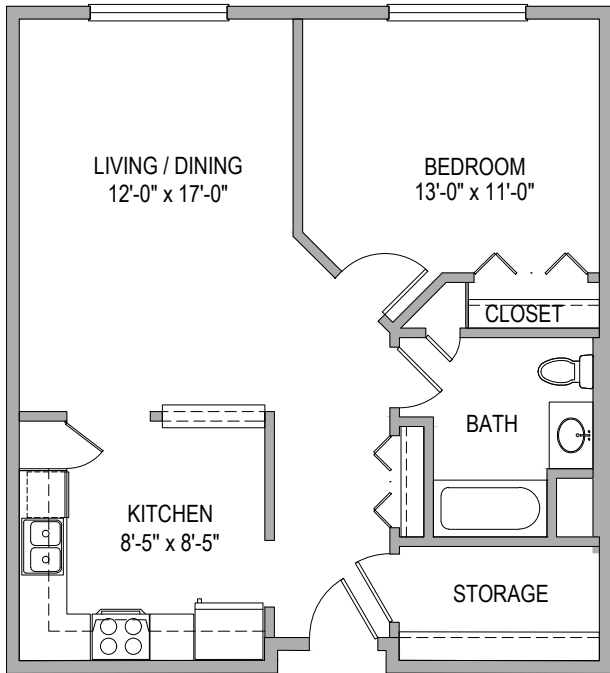
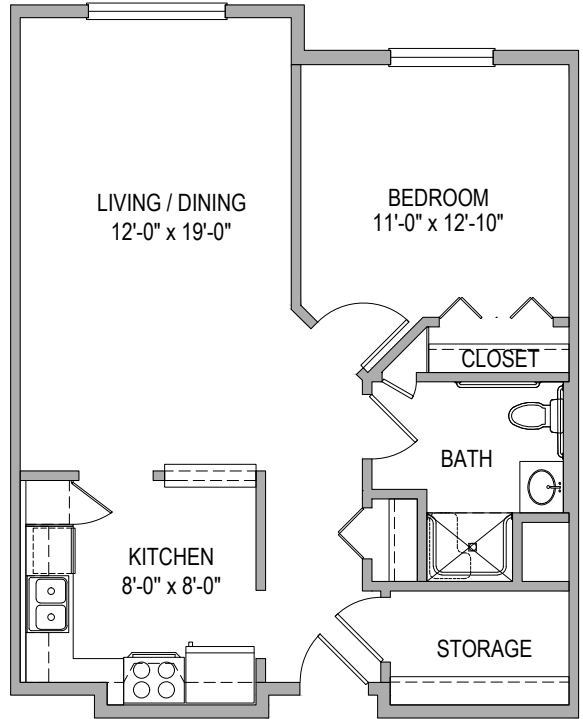
- Electric service
- Telephone service
- Underground heated parking
- Carwash bay
- Transportation for shopping and outings
- Home delivered meals, home care and hospice services available through Optage®
- Guest suite
- Beauty and barber shop
- Pets are welcome (guidelines apply)



Sample Floor Plans

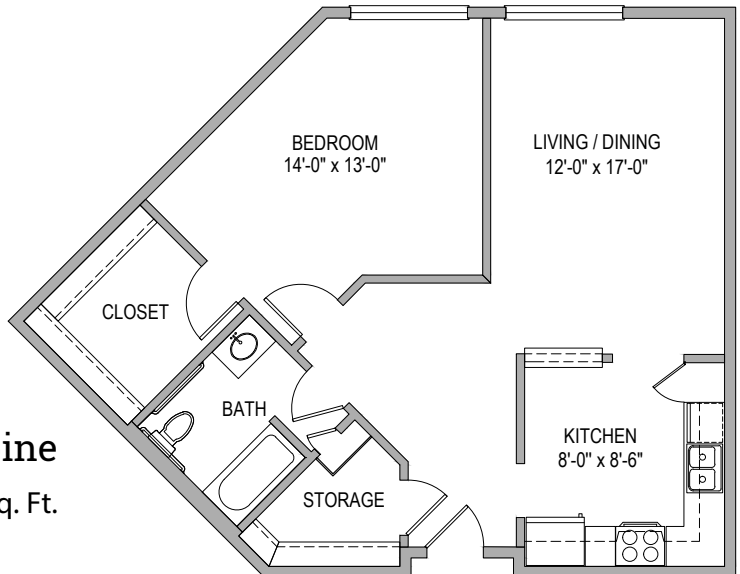
Azalea

One Bedroom | 731 Sq. Ft.



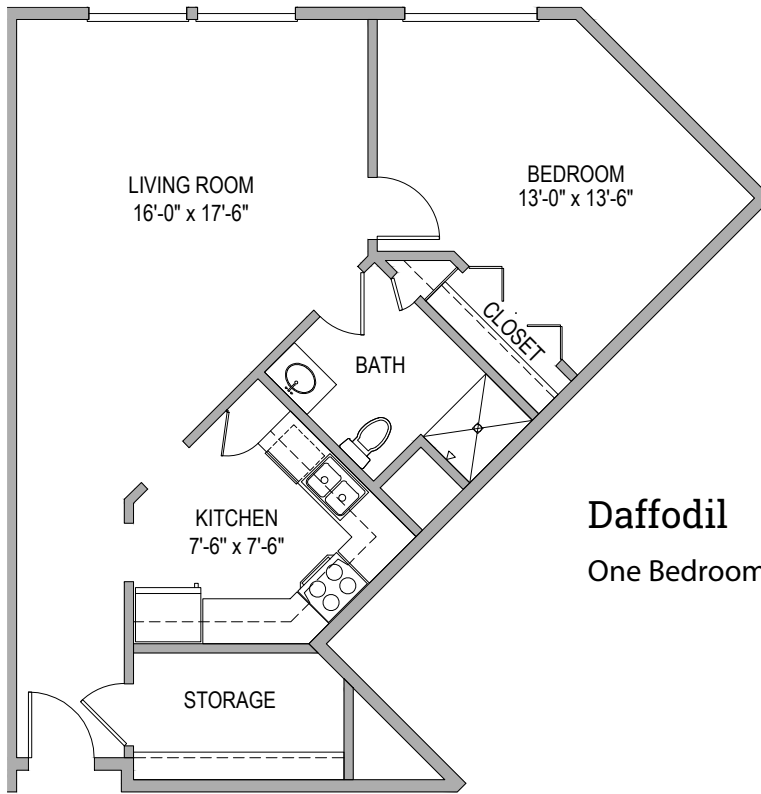
Buttercup

One Bedroom | 750 Sq. Ft.



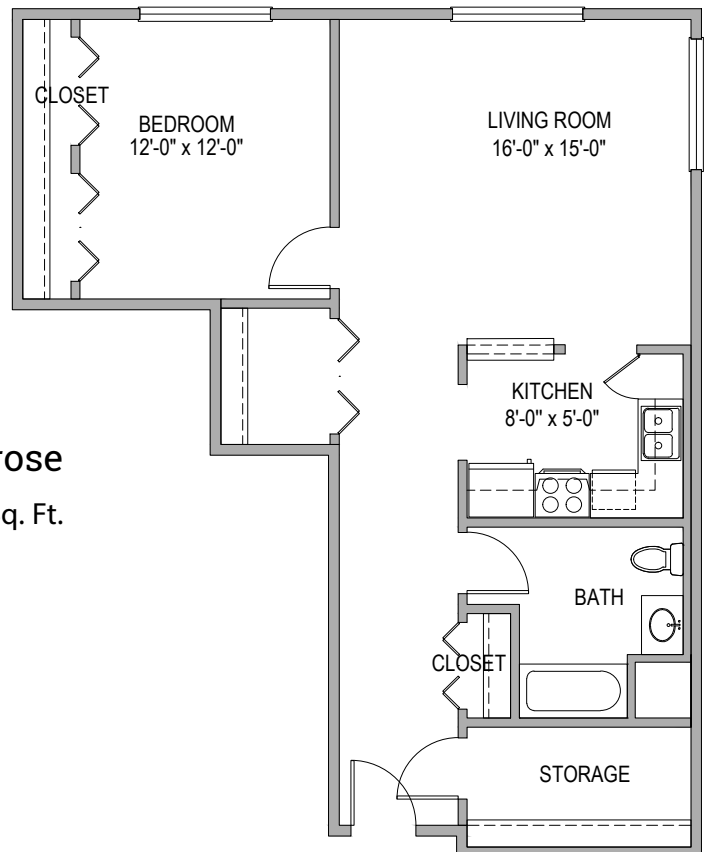
Columbine

One Bedroom | 828 Sq. Ft.



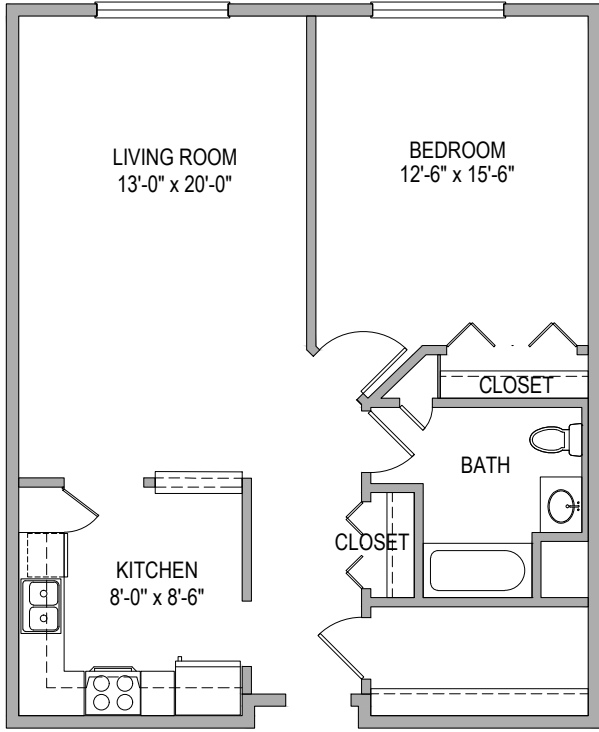
Daffodil

One Bedroom | 828 Sq. Ft.



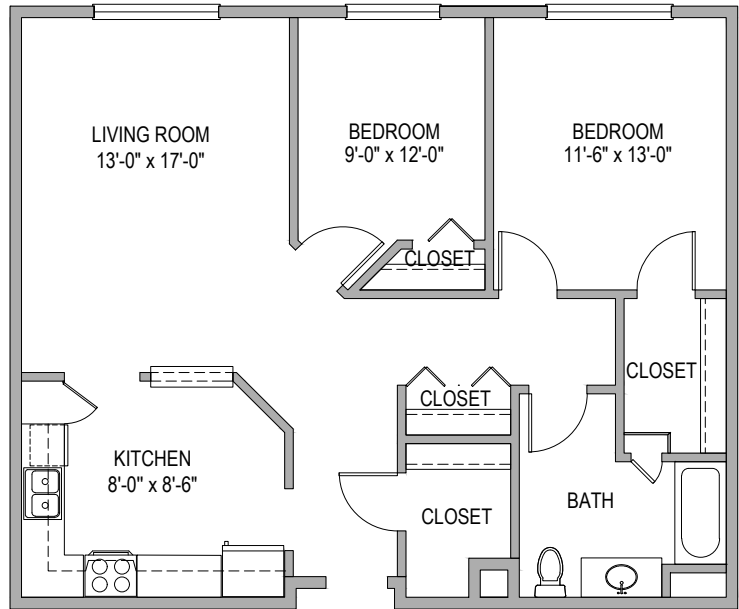
Evening Primrose

One Bedroom | 878 Sq. Ft.



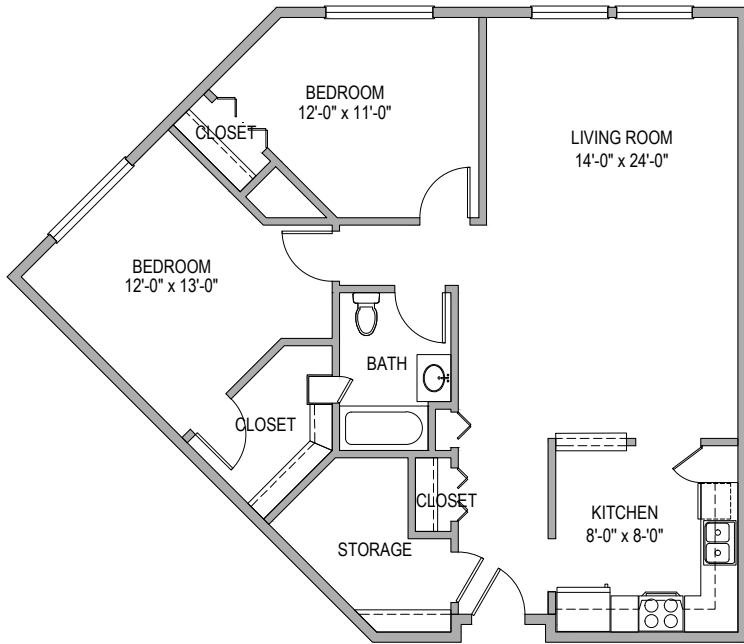
Foxglove

One Bedroom | 889 Sq. Ft.



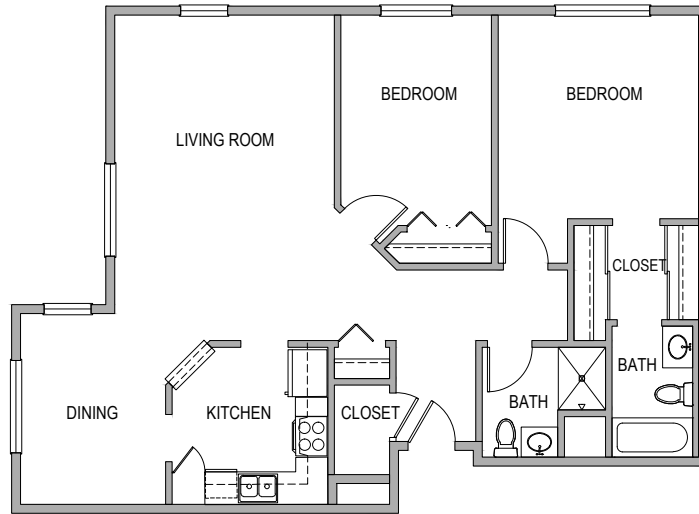
Geranium

Two Bedroom | 1,010 Sq. Ft.



Hibiscus

Two Bedroom | 1,143 Sq. Ft.



Iris

Two Bedroom | 1,228 Sq. Ft.

Floor plans, features and amenities are subject to change without notice. Stated dimensions and square footage are approximate. Additional floor plans may be available. Please ask about availability.

Our senior apartments offer maintenance-free living and comfortable floor plans with value and convenience. Nicely appointed common areas are well-suited for group events and casual gatherings. Social, recreational and volunteer opportunities help create a sense of community.

Distinctive Details

- Full kitchen with stove, self-cleaning oven, refrigerator, and dishwasher
- Oak cabinetry throughout
- Blinds on all windows
- Thoughtfully designed bathroom with either a tub with shower or walk-in shower with built-in seat
- Walk-in storage in most apartments

Monthly Rental Fee

Apartment	Sq. Ft.	Rate
One Bedroom	731–889	\$1,205–\$1,750
Two Bedroom	1,010–1,228	\$1,905–\$2,190



*Income guidelines may apply to some apartments.
Pricing subject to change. Residency agreement available upon request.*



651-714-5474

1033 Gershwin Avenue North
Oakdale, MN 55128

EchoRidgePHS.org

Due to COVID-19 or other future circumstance, some features may be temporarily unavailable or offered in a different way. We anticipate features will become available in original form once it is prudent to do so. Presbyterian Homes & Services (PHS) communities comply with applicable federal civil rights laws and do not discriminate on the basis of race, color, national origin, age, disability or sex.

PresHomes.org

Español (Spanish): *Llame al 1-844-558-6125*

Hmoob (Hmong): *Hu rau 1-844-558-6125*

Tagalog (Filipino): *Tumawag sa 1-844-558-6125*

Professional management by PHS Management, LLC © 2021 Presbyterian Homes and Services
All faiths welcome. Equal housing opportunity.

9/23 

 **presbyterian
homes & services**
freedom to live well®