



# Founders Ridge

The Hearth

Enhanced Assisted Living

# Welcome to Founders Ridge

When a high level of around-the-clock continuous nursing care is essential, choose The Hearth enhanced assisted living.

Enjoy the Hearth's intimate neighborhood and home atmosphere coupled with the support of Liberty Personally Designed Living™, a new approach to care that gives you the freedom to shape your daily life as you desire.

---

## Included Amenities

- Three daily meals plus snacks
- Weekly light housekeeping with daily cleaning assistance as needed
- 24 hour on-site Resident Assistant staffing
- Pastoral care
- Wings® wellness intellectually stimulating programs, spiritual care services, group fitness classes, fitness center, volunteer opportunities
- Designated complimentary transportation to shopping and outings
- Utilities (heat, electric, central air conditioning, water, sewer, and trash)
- Open public Wi-Fi
- Telephone service
- Basic cable television service
- Month-to-month residency agreement
- Priority access to other Presbyterian Homes & Services living and care options based on availability
- Smoke-free community

## Other Conveniences

*Additional fees may apply*

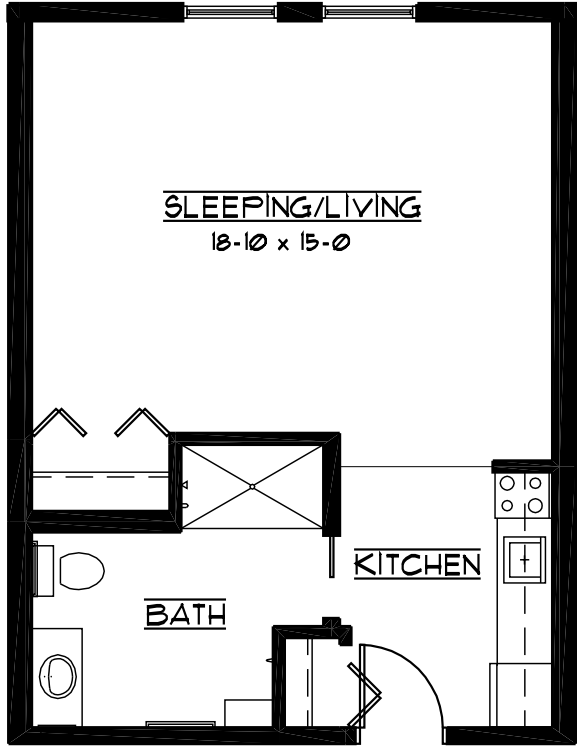
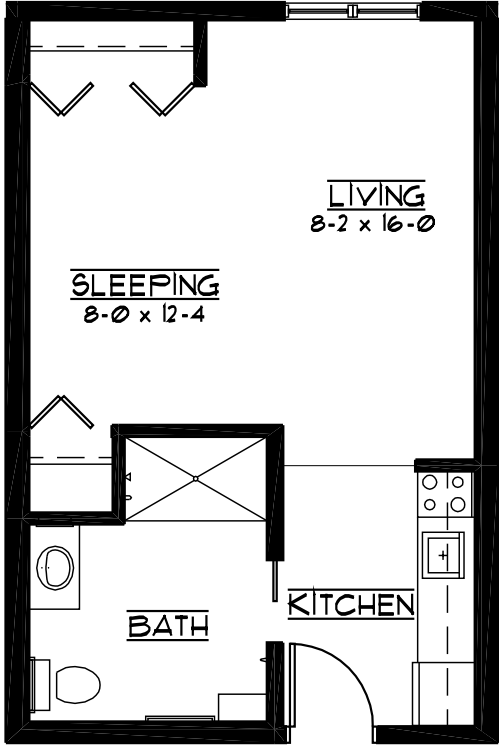
- Coordination of specialized nursing and therapy visits
- Assistance with arranging transportation to medical and social service appointments
- Assistance with accessing community resources and social services
- Access to designated Physician or Nurse Practitioner for on-site services
- Additional home care and hospice services available through Optage®
- Additional loads of laundry (3 per week included)
- Second occupant, \$1,000 plus personal care
- Guest dining
- Guest suite
- Underground parking
- Storage unit
- Outpatient therapy — physical, occupational and speech therapy



# Sample Floor Plans

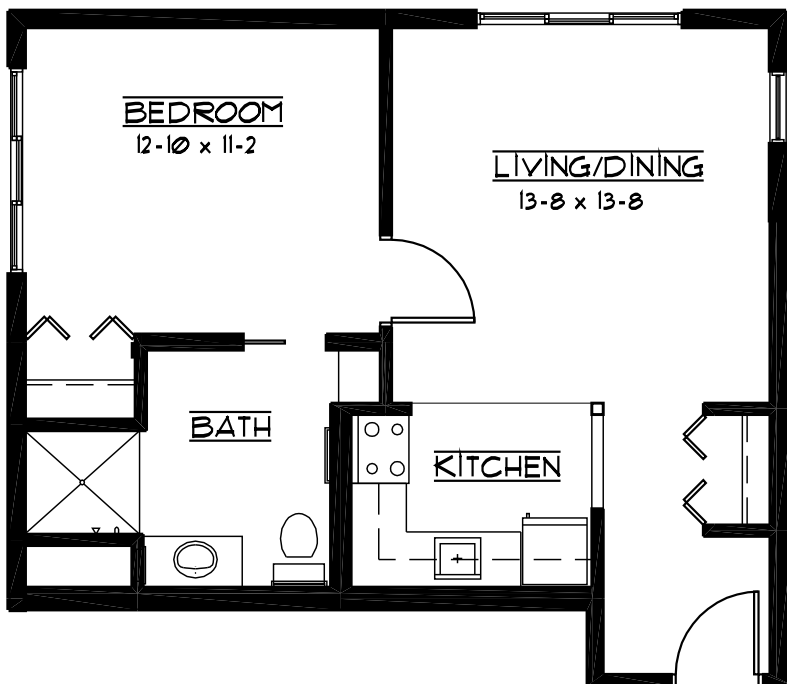
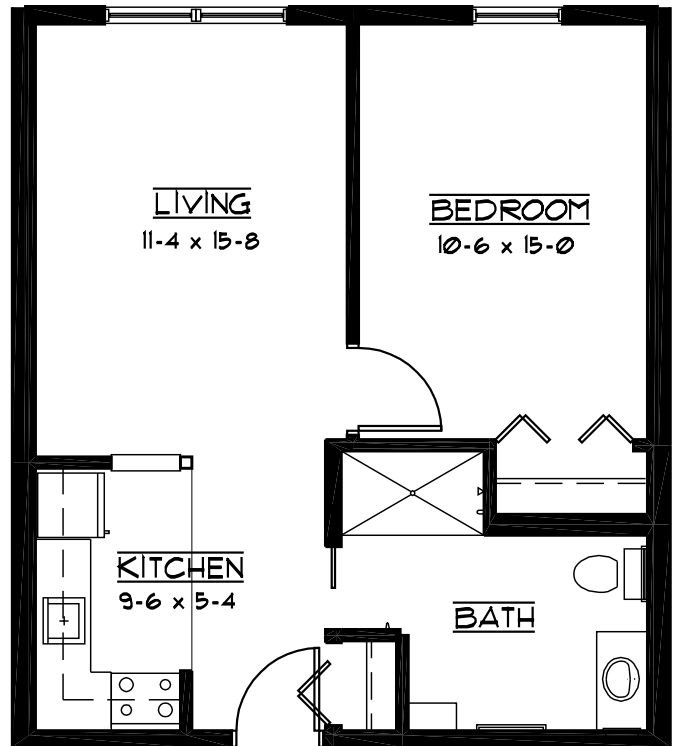
---

**The Cooley**  
Studio | 450 Sq. Ft.

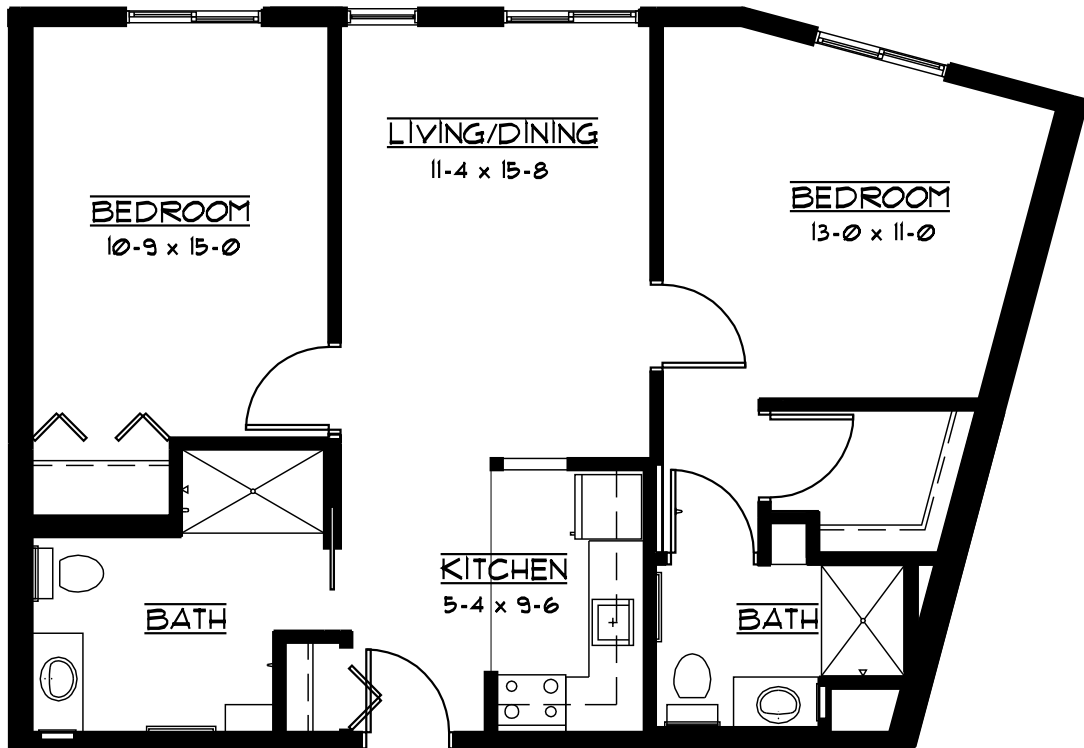


**The Darby**  
Studio | 525 Sq. Ft.

**The Knowles**  
One Bedroom | 610 Sq. Ft.



**The Linder**  
One Bedroom | 620 Sq. Ft.



## The McLeod

Two Bedroom | 920 Sq. Ft.

*Floor plans, features and amenities are subject to change without notice. Stated dimensions and square footage are approximate. Additional floor plans may be available. Please ask about availability.*

# Assisted Living Service Fees

In addition to the monthly rental fee, a monthly assisted living services fee is required based on the amount of care provided.

A nurse will meet with you to complete an initial assessment and make a recommendation of services that could be provided to meet your needs. The services provided will correspond to one of three package levels. These are summarized below with examples of services offered at each level. To view the care assessment, scan the QR code or visit [FoundersRidgePHS.org](http://FoundersRidgePHS.org) and click on "Resident Documents."



## Personal Care Level I: \$5,285/month

- Prompts and reminders for grooming (*no physical assistance*)
- Standard bathroom assistance (*1–6 times daily*)
- Shower assistance (*1–3 times weekly; no hands-on assistance*)
- Dining assistance for snacks, beverages, and light breakfast meals
- Simple medication management, providing set-up and administration (*1–4 times daily*); does not include injections

## Personal Care Level II: \$5,720/month

- Simple or standard dressing and grooming assistance (*no transfer assistance*)
- Extensive bathroom assistance (*7+ times daily*)
- Shower assistance (*4–5 times weekly; 1-person assist*)
- Dining assistance with plate set up and preparation to eat
- Catheter/colostomy assistance (*1–6 times daily*)
- Oxygen management
- Medication management and administration (*5–6 times daily*); includes blood sugar monitoring but not including injections
- 1-person transfers
- Tube feeding

## Personal Care Level III: \$6,155/month

- Extensive dressing and grooming assistance (*including transfer assistance*)
- Extensive bathroom assistance (*7+ times daily; 2-person assist*)
- Shower assistance (*6+ times weekly; with or without lift*)
- Dining assistance including plate set up and observation, cueing to eat and feeding
- Catheter/colostomy assistance (*7+ times daily*)
- Oxygen management
- Medication management and administration (*7+ times daily*); includes blood sugar monitoring, insulin injections, and sliding scale management
- Complex or frequent behavior redirection
- Mechanical lift transfers

## Included in Your Assisted Living Service Fees:

- Initial and ongoing nursing assessment
- Nurse available 24 hours a day/7 days a week
- Nurse liaison with health care professionals
- Nurse scheduling of lab draws
- Nurse maintaining clinical record information
- Laundry (*up to 3 loads per week*)
- Escort to meals and activities
- Assistance with ted hose, ace wraps or Velcro leg wraps
- Daily reassurance check

At Founders Ridge, we know each individual is just that—an individual. And our services reflect that philosophy. Select from a broad range of options depending on your personal preferences. It's all based on the principle of choice.  
**And the choice is yours.**

## Monthly Rental Fee

Apartment	Sq. Ft.	Rate
Studio	450–525	\$4,800–\$5,180
One Bedroom	610–620	\$5,180
Two Bedroom	920	\$6,475

*Pricing subject to change. Residency agreement available upon request.*

## Total Monthly Fees

Apartment Selection	\$
Personal Care <i>(Required)</i>	\$
<b>Estimated Total</b>	<b>\$</b>

*This estimate is offered for planning purposes only. Other charges may apply.*





**952-946-2000**

6600 Auto Club Road  
Bloomington, MN 55438

**FoundersRidgePHS.org**

## Living Options

- Brownstones
- Senior apartments
- Assisted living apartments
- Enhanced assisted living
- Assisted living memory care residence

*Due to COVID-19 or other future circumstance, some features may be temporarily unavailable or offered in a different way. We anticipate features will become available in original form once it is prudent to do so. Presbyterian Homes & Services (PHS) communities comply with applicable federal civil rights laws and do not discriminate on the basis of race, color, national origin, age, disability or sex.*

PresHomes.org

Español (Spanish): Llame al 1-844-558-6125

Hmoob (Hmong): Hu rau 1-844-558-6125

Tagalog (Filipino): Tumawag sa 1-844-558-6125

Professional management by PHS Management, LLC © 2021 Presbyterian Homes and Services  
All faiths welcome. Equal housing opportunity.

9/23 

 **presbyterian  
homes & services**  
*freedom to live well®*