

The Commons Suites at GracePointe Crossing

For a simpler setting that combines freedom with supportive services, choose The Commons Suites assisted living.

Shape daily life as you desire with Liberty Personally Designed Living™, an innovative approach to care. Regardless of which plan you choose, it'll feel like home when you add your own personal touch.

Included Amenities

- Partially furnished private or semi-private suite with tea kitchen
- Escorts to meals and activities for first 5 days
- Three restaurant-style meals daily
- Flexible dining hours
- Weekly light housekeeping and linen change
- Laundry facilities
- Urgent call system
- 24 hour on-site Resident Assistant staffing
- Pastoral care
- Designated complimentary transportation to shopping and outings
- Health and wellness clinic
- Wings® wellness intellectually stimulating programs, spiritual care services, group fitness classes, fitness center, volunteer opportunities
- Utilities (heat, electric, central air conditioning, water, sewer, and trash)
- Telephone service
- Basic cable television service
- Open public Wi-Fi
- Priority access to other GracePointe Crossing and Presbyterian Homes & Services living and care options based on availability
- Smoke-free community

Floor plans, features and amenities are subject to change without notice. Stated dimensions and square footage are approximate. Additional floor plans may be available. Please ask about availability.

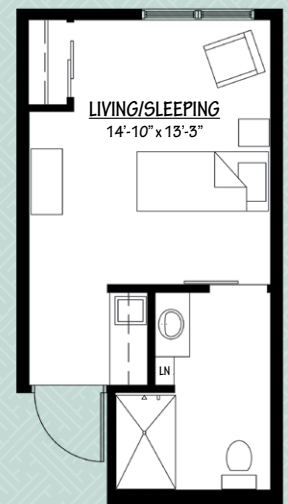
Other Conveniences

Additional fees may apply

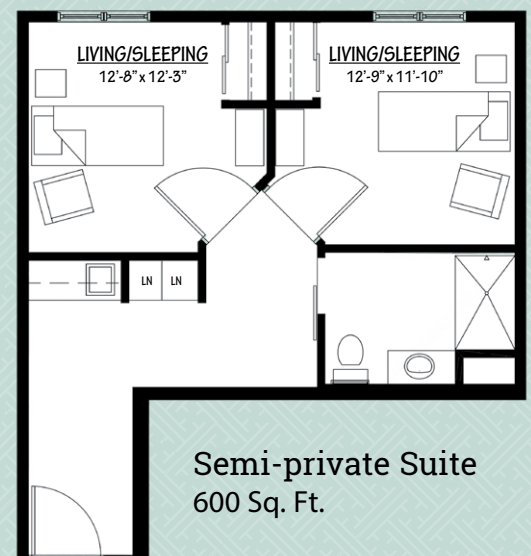
- Access to designated Physician or Nurse Practitioner for on-site services
- Assistance with accessing community resources and social services
- Laundry service
- Additional housekeeping
- Transportation for shopping and outings
- Handyman
- On-site banking services
- Guest dining
- Outpatient therapy — physical, occupational and speech therapy

Sample Floor Plans

Private Suite
325 Sq. Ft.



Semi-private Suite
600 Sq. Ft.



Monthly Personal Care Fee Ranges*

Points from Assessment	Monthly Fee
0–9	\$420 (required)
10–101	\$840–\$2,100
102–239	\$2,520–\$4,200
240–354	\$4,410–\$5,810
355–492	\$5,460–\$6,300

*The care fee ranges above are for estimating purposes only.

Included in Your Personal Care Fees:

- Initial nursing assessment
- Scheduled nursing hours and on-call staff consultation
- Nurse liaison with health care professionals
- Quarterly Nurse review
- Nurse coordination of laboratory requests
- Nurse maintains clinical record information

Due to COVID-19 or other future circumstance, some features may be temporarily unavailable or offered in a different way. We anticipate features will become available in original form once it is prudent to do so. Presbyterian Homes & Services (PHS) communities comply with applicable federal civil rights laws and do not discriminate on the basis of race, color, national origin, age, disability or sex.

PresHomes.org

Español (Spanish): Llame al 1-844-558-6125

Hmoob (Hmong): Hu rau 1-844-558-6125

Tagalog (Filipino): Tumawag sa 1-844-558-6125

Professional management by PHS Management, LLC

© 2021 Presbyterian Homes and Services

All faiths welcome. Equal housing opportunity.



Monthly Rental Fee

Apartment	Rate
Private Suite	\$2,875–\$3,005
Semi-private Suite	\$2,500

Assisted Living Service Fees

In addition to the monthly rental fee, a monthly personal care fee for assisted living services is required based on the amount of care provided. The following steps help to assess your care needs and guide you through the residency process:

Step 1: Reserve an apartment at GracePointe Crossing.

We will help you through the reservation process and provide you with essential information in preparation for the following steps.

Step 2: Schedule an assisted living care assessment

appointment. A nurse will meet with you to complete an initial assessment and help create a personalized care plan. The assessment will include a review of your individualized needs and a recommendation of services that could be provided to meet those needs. Each service is assigned a point value and the assessment will give you an estimated total number of points.* To view the care assessment, scan the QR code or visit GracePointeCrossing.org and click on "Resident Documents."



Step 3: Schedule a residency agreement appointment.

We will review the residency agreement, payment information and other resources with you. Once the residency agreement process is complete, your move-in date will be confirmed.



GracePointe Crossing

763-689-1474

GracePointeCrossing.org

Pricing subject to change.

Residency agreement available upon request.