



# THE COMMONS

Assisted Living

# Welcome to HallMar Village

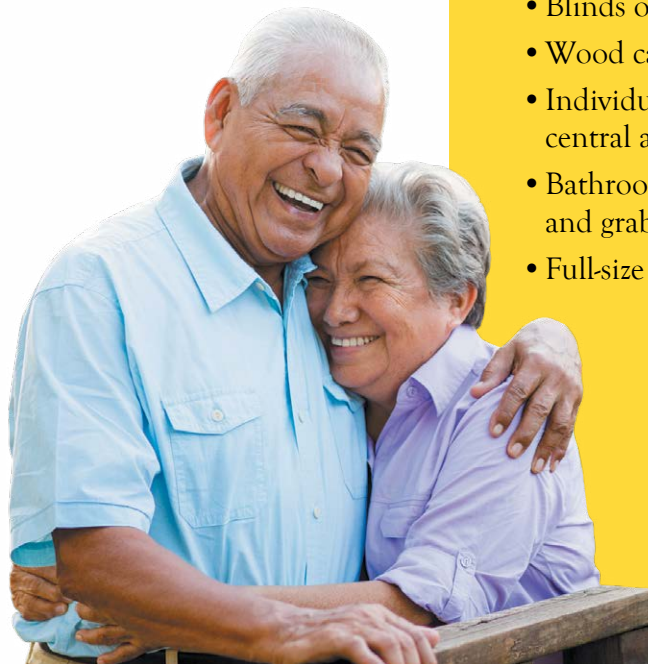
For a setting that offers freedom combined with the comfort of knowing supportive services are available, choose The Commons assisted living.

Shape your daily life as you desire with the support of personally designed living, an innovative approach to personal care and assistance. Nicely appointed common areas are well-suited for group or casual gatherings, while social and recreational opportunities create a sense of community.

---

## Included Amenities

- Bistro & Dining Room
- Club Room
- Chapel
- Salon & Spa
- Community Room
- Library
- Health & Wellness Center, including a Strength Room, Cardio Room, and a Yoga Studio
- Indoor Swimming Pool
- Golf Simulator
- Art Studio
- Car Wash
- Woodworking Shop
- Surround Sound Movie Theater
- The Market for grocery and other items
- Intellectually stimulating wellness programs, spiritual care services, group fitness classes, and volunteer opportunities
- Two daily meals
- Utilities (heat, electric, central air conditioning, water, sewer and trash)
- Basic cable television services
- Open public Wi-Fi
- Pastoral care
- Direct access to the Chris & Suzy DeWolf Family Innovation Center for Aging & Dementia, which offers resources and support to families and individuals



## Other Conveniences

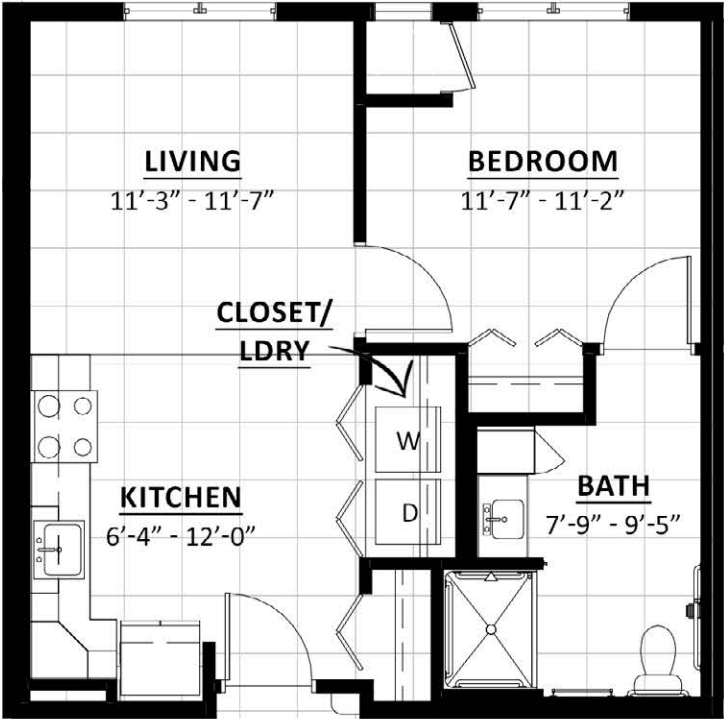
- Outdoor features, including
  - » a terrace with grilling station, gas fireplace, and a variety of seating options
  - » walking paths
  - » courtyards
  - » gardens
- Guest dining\*
- Personal trainer\*
- Storage unit (based on availability)\*
- Home care and hospice services\*
- Underground heated parking\*

*\*Additional fees may apply*

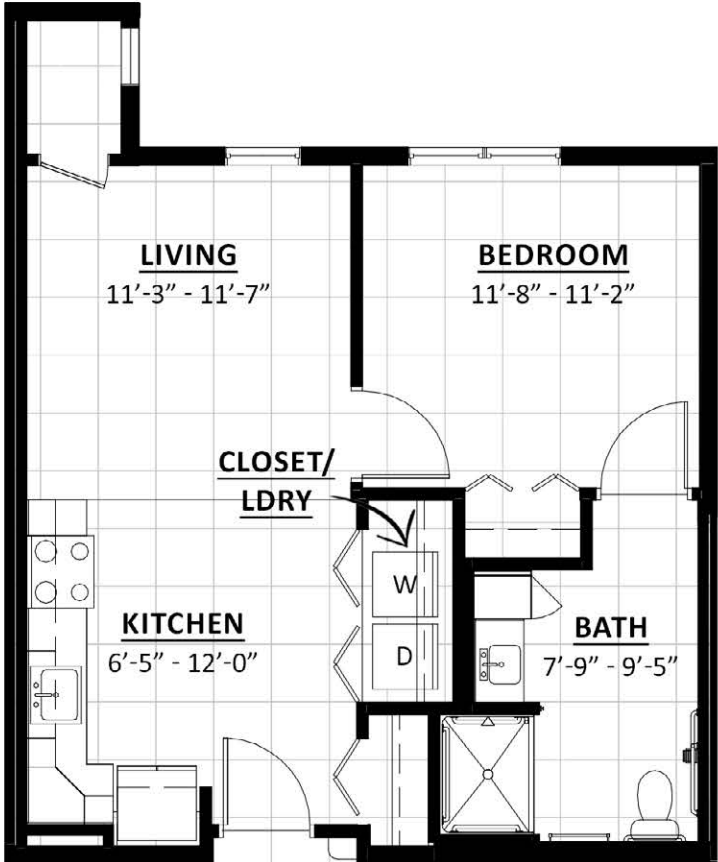
## Distinctive Details

- Bright, open floor plans emphasize spacious rooms with nine-foot ceilings
- Refrigerator, stove/oven and microwave
- Blinds on all windows
- Wood cabinetry throughout
- Individually controlled heat and central air conditioning
- Bathroom with roll-in shower and grab bar
- Full-size washer and dryer

# Sample Floor Plans

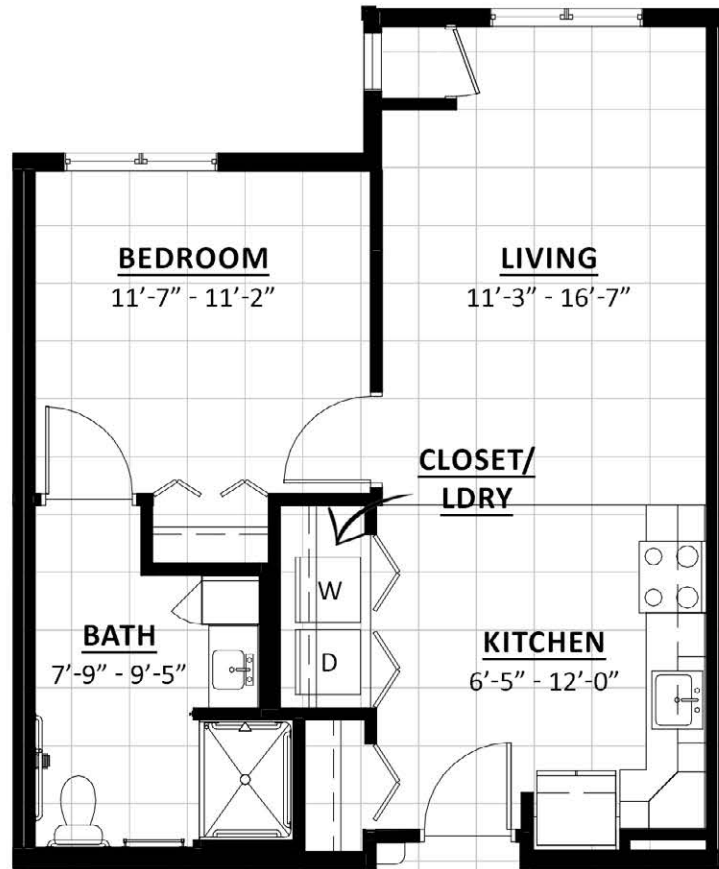


**Ushers**  
One Bedroom  
588 Sq. Ft.



**Czech**  
One Bedroom  
613 Sq. Ft.

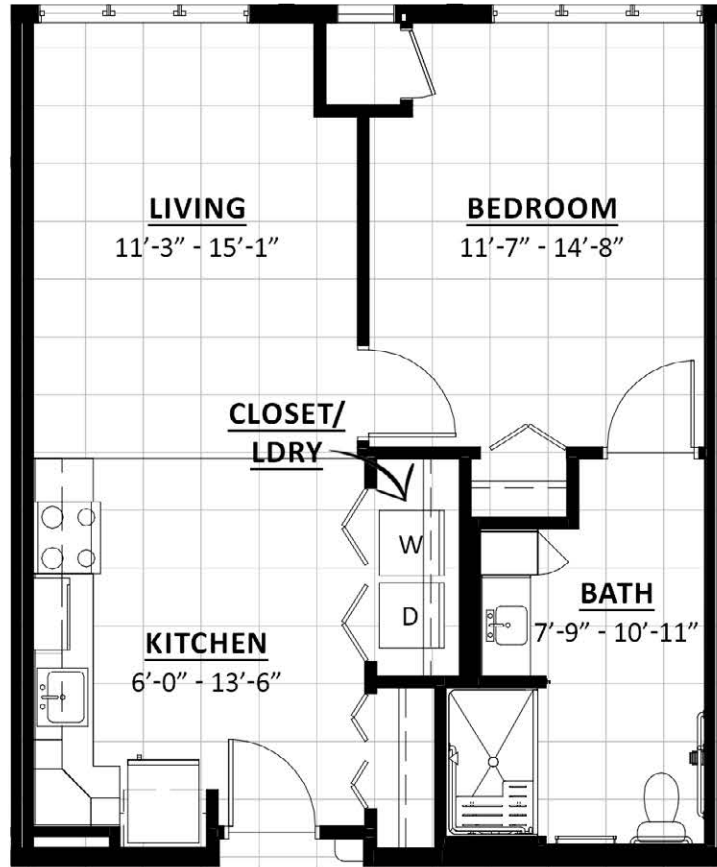
Floor plans, features and amenities are subject to change without notice. Stated dimensions and square footage are approximate. Additional floor plans may be available. Please ask about availability.



**McBride**

One Bedroom

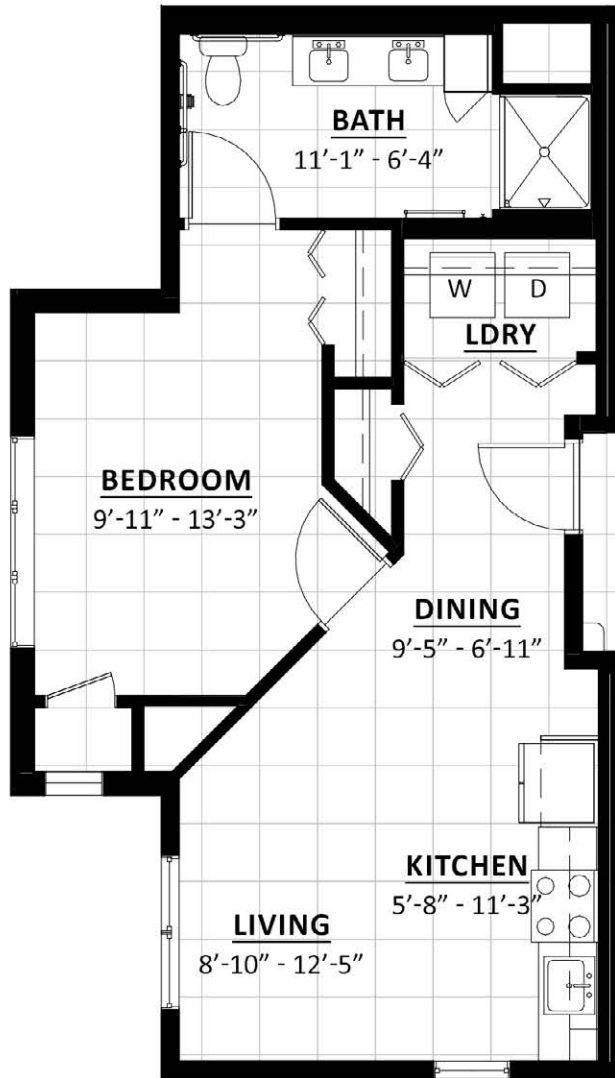
649 Sq. Ft.



## Wikiup

One Bedroom

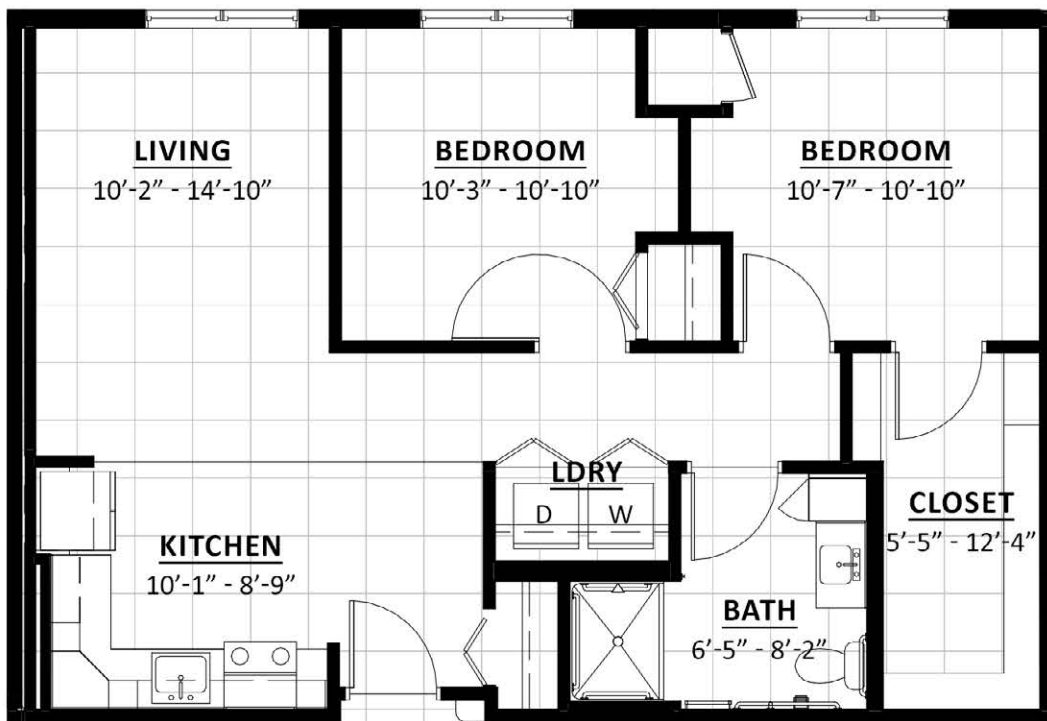
709 Sq. Ft.



**Dows**

One Bedroom

650 Sq. Ft.



**Cherry Hill**

Two bedroom

873 Sq. Ft.

At HallMar Village, we know each individual is just that—an individual. Our services reflect that philosophy. Select from a broad range of options depending on your personal preferences. It's all based on the principle of choice. **And the choice is yours.**

### Monthly Personal Care Fee Ranges\*

Points from Assessment	Monthly Fee
0-55	\$460-\$1,380
56-124	\$1,840-\$2,760
125-193	\$3,220-\$4,140
194-262	\$4,350-\$4,770
263-331	\$4,980-\$5,400

\*The care fee ranges above are for estimating purposes only.

### Included in Your Personal Care Fees:

- Initial and ongoing nursing assessments
- Scheduled nursing hours and on-call nursing available for staff consultation
- Nurse liaison with health care professionals
- Nurse scheduling of lab draws
- Nurse maintaining clinical record information
- Daily reassurance check
- Emergency pendant


## Monthly Rental Fee

Name	Style	Sq. Ft.	Rate
Ushers	One Bedroom	588	\$4,115
Czech	One Bedroom	613	\$4,290
McBride	One Bedroom	649	\$4,545
Dows	One Bedroom	650	\$4,550
Wikiup	One Bedroom	709	\$4,965
Cherry Hill	Two Bedroom	873	\$6,110

Pricing subject to change. Occupancy agreement available upon request.

## Assisted Living Service Fees

In addition to the Monthly Rental Fee, a Monthly Personal Care Fee for assisted living services is required based on the amount of care provided. The following steps help to assess your care needs and guide you through the residency process:

- Step 1: Reserve an apartment at HallMar Village.** We will help you through the reservation process and provide you with essential information in preparation for the following steps.
- Step 2: Schedule an assisted living care assessment appointment.** A nurse will meet with you to complete an initial assessment and help create a personalized service plan. The assessment will include a review of your individualized needs and a recommendation of services that could be provided to meet those needs. Each service is assigned a point value and the assessment will give you an estimated total number of points.\* You can view the assessment by visiting the HallMar Village website, in the Resident Documents and clicking the AL Functional Assessment or scanning the QR code.
 
- Step 3: Schedule a residency agreement appointment.** We will review the residency agreement, payment information and other resources with you. Once the residency agreement process is complete, your move-in date will be confirmed.

Pricing subject to change. Residency agreement available upon request.



## Trusted, experienced providers working together:

Mercy Medical Center is a nationally recognized health system, rooted in the community for more than 120 years. As a non-profit, faith-based organization, Mercy provides excellent preventive, acute, and post-acute care and expertise on aging and those living with dementia.

Presbyterian Homes & Services (PHS), based in St. Paul, Minnesota, is a non-profit, faith-based organization providing a broad array of high-quality housing choices, care and service options for older adults. Over 7,100 employees serve more than 26,000 older adults through over 59 PHS-affiliated senior living communities in Minnesota, Iowa and Wisconsin, and through home and community services. Established in 1955, PHS has earned the reputation as an innovative leader dedicated to promoting independence, vitality and well-being for those they serve.

HallMar Village residents have the benefit of direct access to the Chris & Suzy DeWolf Family Center for Aging & Dementia. This is available to HallMar residents and those living in Eastern Iowa. These services include the Mercy Center for Memory Health, the Family Caregivers Center, as well as an Age & Dementia Friendly Smart Show Room. The Show Room features kiosks where products and information are available to enhance the lives of older adults, and those living with dementia. The DeWolf Innovation Center is a place of continuing discovery with a goal to reframe aging and dementia. Residents at HallMar Village will be offered the opportunity to pilot the ideas, products and methods discovered at the Innovation Center.

## Living Options

- Beautifully arranged senior apartments
- Relaxing, thoughtfully designed assisted living apartments
- Private, nurturing memory care apartments
- Comfortable skilled care center personal suites

319-200-3850  
8900 C Avenue NE  
Cedar Rapids, IA 52302  
HallMarVillagePHS.org



Equal housing opportunity.  
All faiths welcome.  
©2023 HallMar Village