



THE ARBOR

Memory Care

Welcome to HallMar Village

The Arbor memory care provides a vibrant neighborhood setting where dedicated staff serve the unique needs of each individual with warmth and compassion, and with care models specially designed to enrich the lives of individuals living with dementia or other memory conditions. Stimulating activities and personalized care assure families their loved one has the opportunity to live life to the fullest.

We believe that caring for the needs of those with dementia grants us an extraordinary opportunity for ministry. Our dementia program is the culmination of many years of thoughtful consultation with staff, families, and leaders in the field of dementia research. We use a three-part approach to care that allows your loved one to receive the affirmation and reassurance they need.

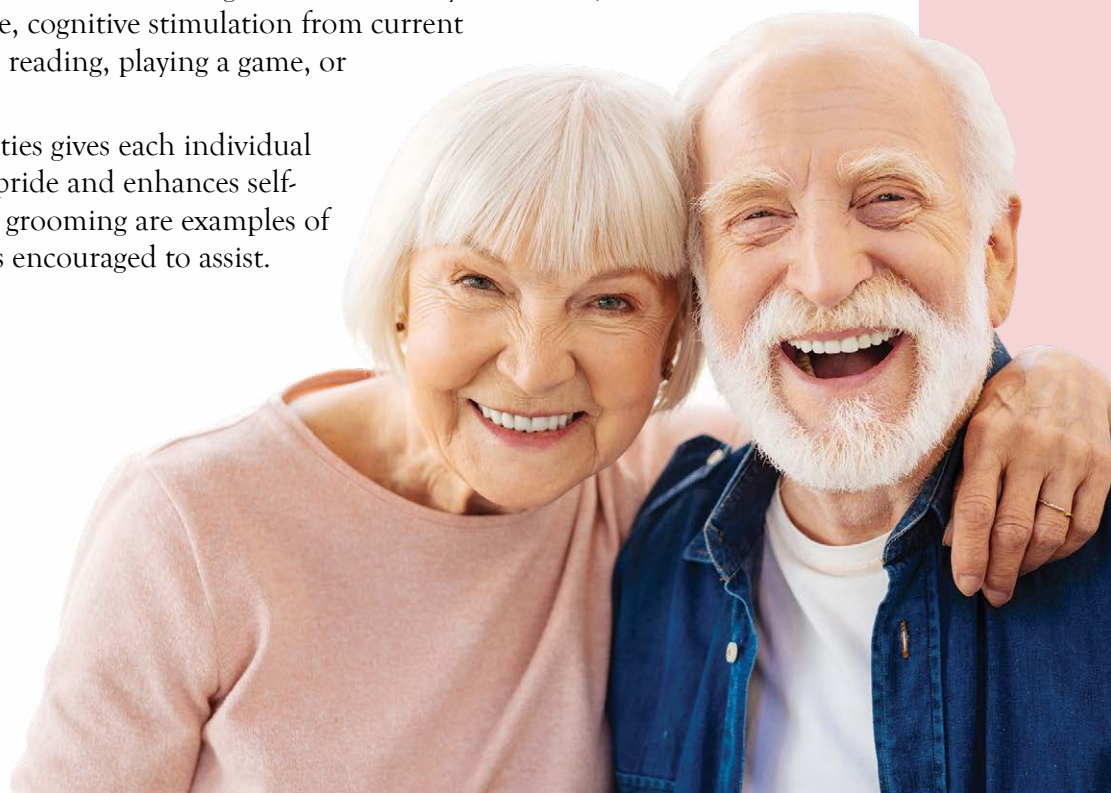
We are blessed to enhance our dementia care initiatives through the collaboration of the Chris & Suzy DeWolf Family Center for Aging & Dementia and Presbyterian Homes in the future.

Our Dementia Program

We begin by assessing individual needs and creating a plan of care, and continue by supporting resident life skills as well as involving and providing guidance to families. Encouraging independence and providing a sense of purpose, enjoyment, and success are our guiding principles.

Activities and specialized programming in three main areas are essential: life skills, life enrichment, and self-care.

- Life skill activities help recall the person's various roles in life. Some examples include setting tables, doing office work, and sharing hobbies.
- Recreational and life-enriching activities provide an ongoing opportunity to engage in social gatherings or enjoy leisure activities. A wide range of activities may be offered, such as: leisure and quiet time, exercise, cognitive stimulation from current events and life review, baking, reading, playing a game, or spiritual reading and prayer.
- Participation in self-care activities gives each individual a sense of independence and pride and enhances self-esteem. Bathing, dressing and grooming are examples of cares in which each resident is encouraged to assist.



The Arbor strives to ensure the comfort and convenience of residents and their families. From our inclusive amenities to comprehensive care options, families gain peace of mind knowing their loved one has support with all the comforts of home.

Distinctive Details

- Studio and one-bedroom apartments with private bathrooms and kitchenettes
- Suite featuring private bathroom with roll-in shower
- Neutral carpet and finishes
- Horizontal blinds on all windows
- Individually controlled heat and central air conditioning
- Smoke-free community

Included Amenities

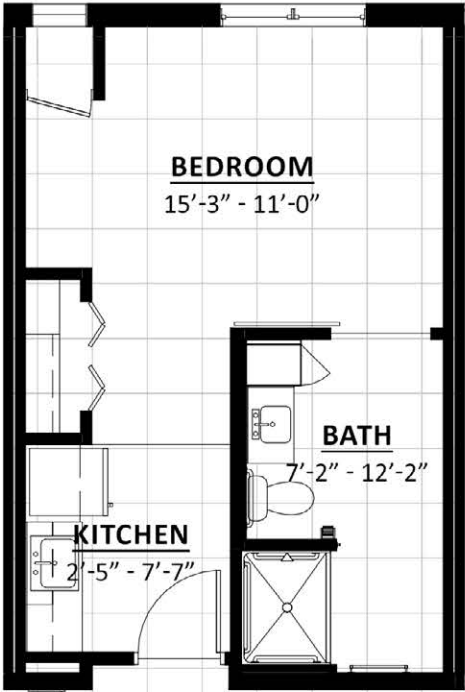
- Three daily meals and snacks served in the family Dining Room
- Housekeeping including linen change and laundry service
- Pastoral care
- Residential setting with secured entrance
- Outdoor courtyard with walking path
- Utilities (heat, electric, central air conditioning, water, sewer, and trash)
- Basic cable service
- Priority access to Presbyterian Homes & Services living and care options based on availability
- Direct access to the Chris & Suzy DeWolf Family Innovation Center for Aging & Dementia, which offers resources and support to families and individuals

Other Conveniences

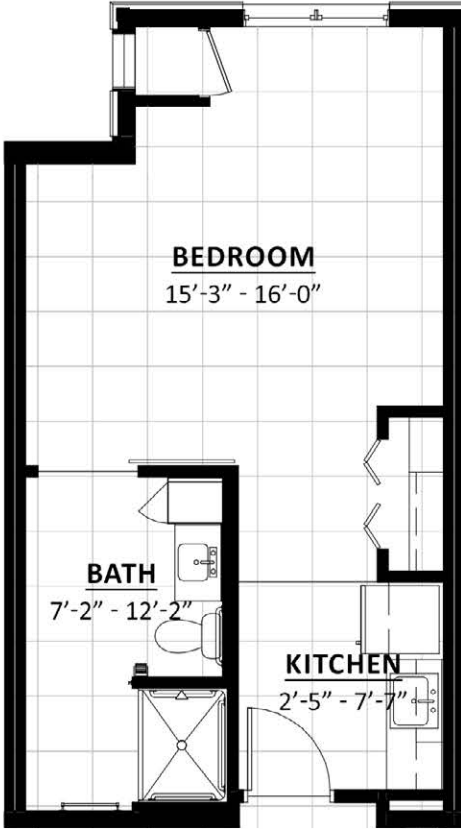
Additional fees may apply

- Second occupant
- Assistance with accessing community resources and social services
- Additional laundry service beyond base service
- Guest dining

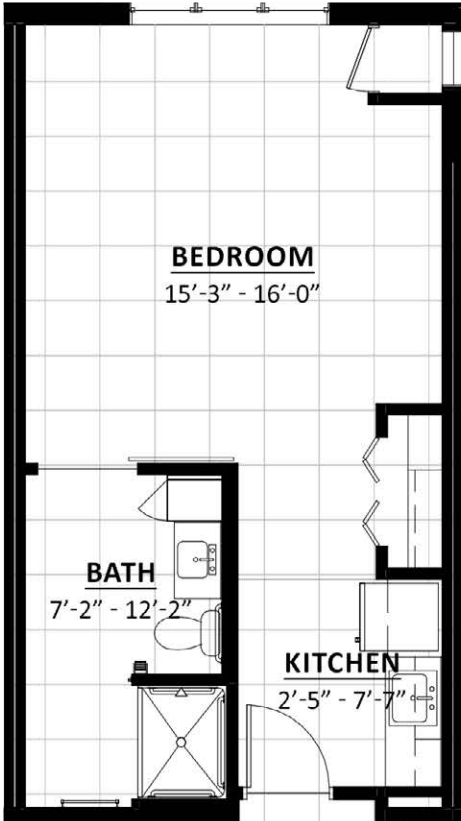
Sample Floor Plans



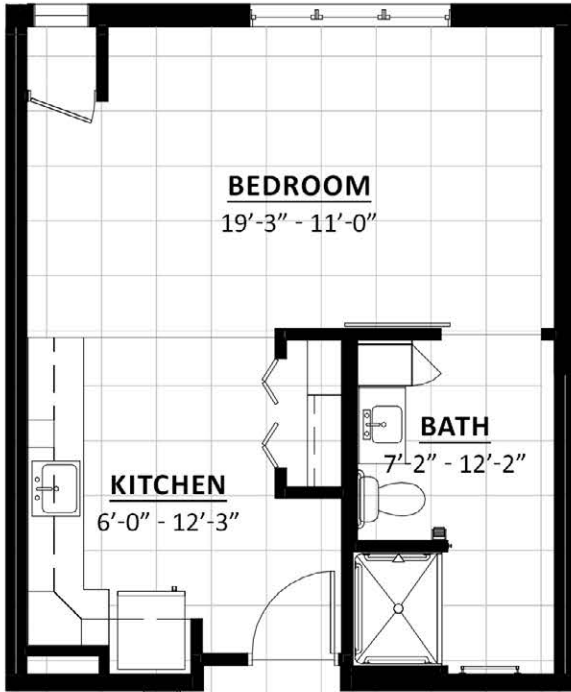
Seasons
Private Studio | 391 Sq. Ft.



Brucemore
Private Studio | 452 Sq. Ft.

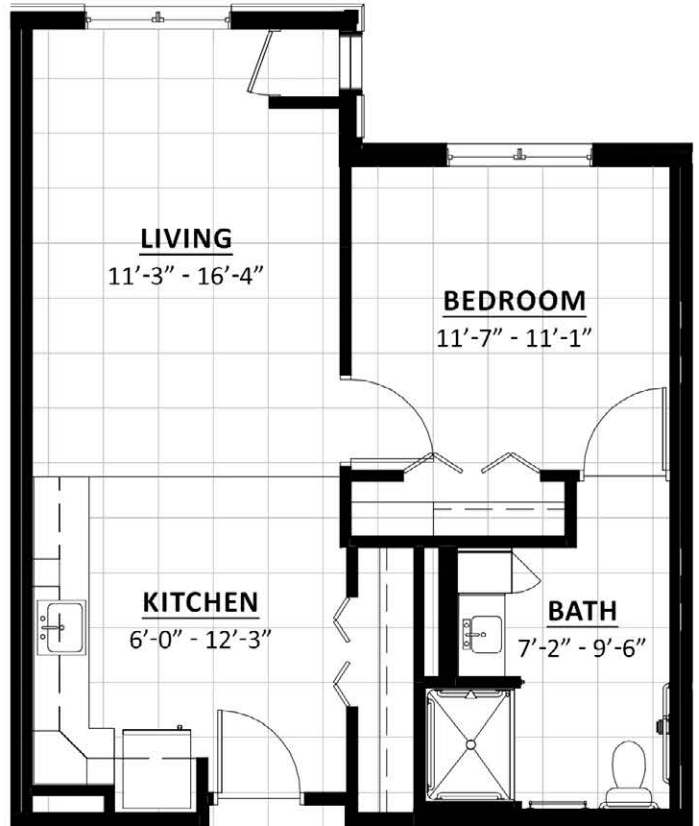


Grant Wood
Private Studio | 452 Sq. Ft.



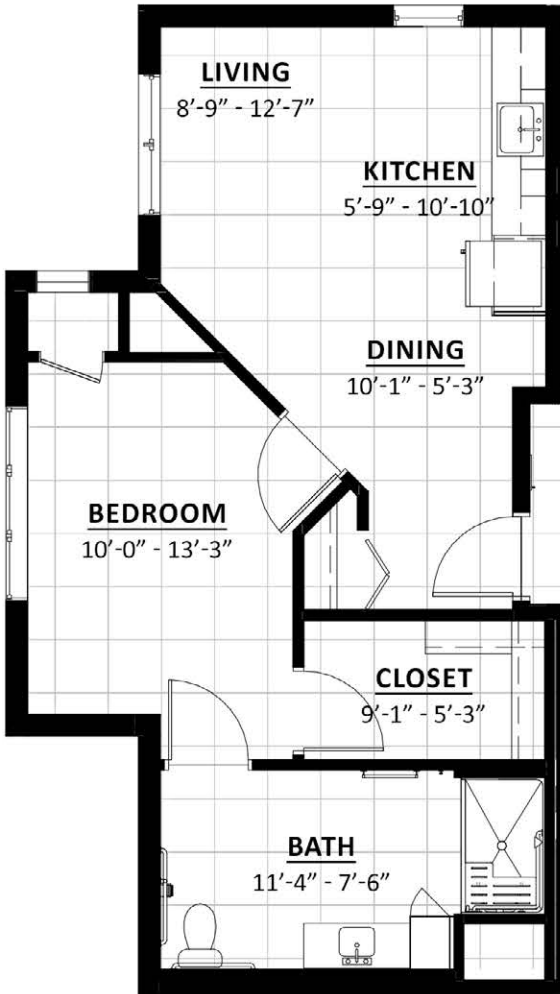
Pinicon Ridge

Private Studio | 493 Sq. Ft.



Bever Park

One bedroom | 650 Sq. Ft.



Granger

Private | 650 Sq. Ft.

Personal Care Services

Engaging programs and comforting amenities are just the beginning of the services provided.

A nurse is on site or available to resident care staff 24 hours a day. Resident care assistants are present 24 hours a day to assist with resident needs.

Prior to starting services, a nurse completes a comprehensive assessment and determines a resident's personal care needs during the assessment. An Individual Service Plan is written in collaboration with a resident, their family and physician.

The following services are included in addition to the Individual Service Plan:

- Initial nursing assessment
- 24-hour, on-site Resident Assistant staffing
- Medication management
- Reassurance and comfort care
- Escorts within the Arbor
- Nurse consultation with health care professionals as needed
- Nurse maintains clinical record
- Coordination of laboratory requests



At HallMar Village, we know each individual is just that—an individual. Our services reflect that philosophy. Select from a broad range of options depending on your personal preferences. It's all based on the principle of choice. **And the choice is yours.**

Monthly Personal Care Fee Ranges*

Points from Assessment	Monthly Fee
0-55	\$460-\$1,380
56-124	\$1,840-\$2,760
125-193	\$3,220-\$4,140
194-262	\$4,350-\$4,770
263-331	\$4,980-\$5,400

*The care fee ranges above are for estimating purposes only.

Included in Your Personal Care Fees:

- Initial and ongoing nursing assessments
- Scheduled nursing hours and on-call nursing available for staff consultation
- Nurse liaison with health care professionals
- Nurse scheduling of lab draws
- Nurse maintaining clinical record information
- Daily reassurance check
- Emergency pendant


Monthly Rental Fee

Name	Style	Sq. Ft.	Rate
Seasons	Studio	391	\$3,715
Brucemore	Studio	452	\$4,295
Grant Wood	Studio	472	\$4,485
Pinicon Ridge	Studio	493	\$4,685
Bever Park	Studio	650	\$6,175
Granger	Studio	650	\$6,175

Pricing subject to change. Occupancy agreement available upon request.

Memory Care Service Fees

In addition to the Monthly Rental Fee, a Monthly Personal Care Fee for assisted living services is required based on the amount of care provided. The following steps help to assess your care needs and guide you through the residency process:

- Step 1: Reserve an apartment at HallMar Village.** We will help you through the reservation process and provide you with essential information in preparation for the following steps.
- Step 2: Schedule a memory care assessment appointment.** A nurse will meet with you to complete an initial assessment and help create a personalized service plan. The assessment will include a review of your individualized needs and a recommendation of services that could be provided to meet those needs. Each service is assigned a point value and the assessment will give you an estimated total number of points.* You can view the assessment by visiting the HallMar Village website, in the Resident Documents, Memory Care Functional Assessment or scanning the  QR code.
- Step 3: Schedule a residency agreement appointment.** We will review the residency agreement, payment information and other resources with you. Once the residency agreement process is complete, your move-in date will be confirmed.

Pricing subject to change. Residency agreement available upon request.



Trusted, experienced providers working together:

Mercy Medical Center is a nationally recognized health system, rooted in the community for more than 120 years. As a non-profit, faith-based organization, Mercy provides excellent preventive, acute, and post-acute care and expertise on aging and those living with dementia.

Presbyterian Homes & Services (PHS), based in St. Paul, Minnesota, is a non-profit, faith-based organization providing a broad array of high-quality housing choices, care and service options for older adults. Over 7,100 employees serve more than 26,000 older adults through over 59 PHS-affiliated senior living communities in Minnesota, Iowa and Wisconsin, and through home and community services. Established in 1955, PHS has earned the reputation as an innovative leader dedicated to promoting independence, vitality and well-being for those they serve.

HallMar Village residents have the benefit of direct access to the Chris & Suzy DeWolf Family Center for Aging & Dementia. This is available to HallMar residents and those living in Eastern Iowa. These services include the Mercy Center for Memory Health, the Family Caregivers Center, as well as an Age & Dementia Friendly Smart Show Room. The Show Room features kiosks where products and information are available to enhance the lives of older adults, and those living with dementia. The DeWolf Innovation Center is a place of continuing discovery with a goal to reframe aging and dementia. Residents at HallMar Village will be offered the opportunity to pilot the ideas, products and methods discovered at the Innovation Center.

Living Options

- Beautifully arranged senior apartments
- Relaxing, thoughtfully designed assisted living apartments
- Private, nurturing memory care apartments
- Comfortable skilled care center personal suites

319-200-3850
8900 C Avenue NE
Cedar Rapids, IA 52302
HallMarVillagePHS.org



Equal housing opportunity.
All faiths welcome.
©2023 HallMar Village