



# Highland Path

The Commons

Assisted Living

# Welcome to Highland Path

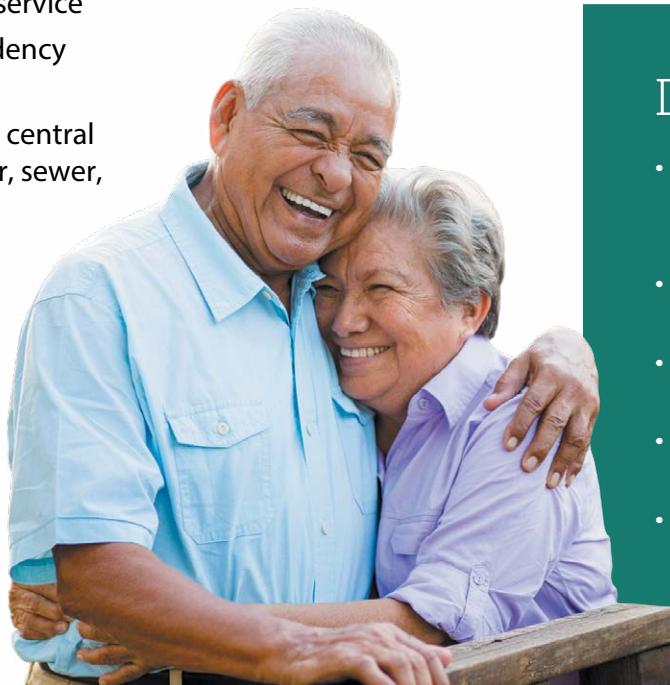
For a setting that offers freedom combined with the comfort of knowing supportive services are available, choose The Commons assisted living.

Shape your daily life as you desire with the support of Liberty Personally Designed Living™, an innovative approach to personal care and assistance. Nicely appointed common areas are well-suited for group or casual gatherings, while social and recreational opportunities create a sense of community.

---

## Included Amenities

- Escorts to meals and activities for first 5 days
- Three meals daily served restaurant-style
- Weekly light housekeeping and linen change
- Urgent call system
- 24 hour on-site Resident Assistant staffing
- Intellectually stimulating programs, spiritual care services, group fitness classes, fitness center, volunteer opportunities
- Controlled entrance
- Designated complimentary transportation to shopping and outings
- Apartment and building maintenance
- Smoke-free community
- Open public Wi-Fi
- Basic cable television service
- Month-to-month residency agreement
- Utilities (heat, electric, central air conditioning, water, sewer, and trash)
- Preferred access to other Presbyterian Homes & Services living and care options based on availability (guidelines apply)



## Other Conveniences

*Additional fees may apply*

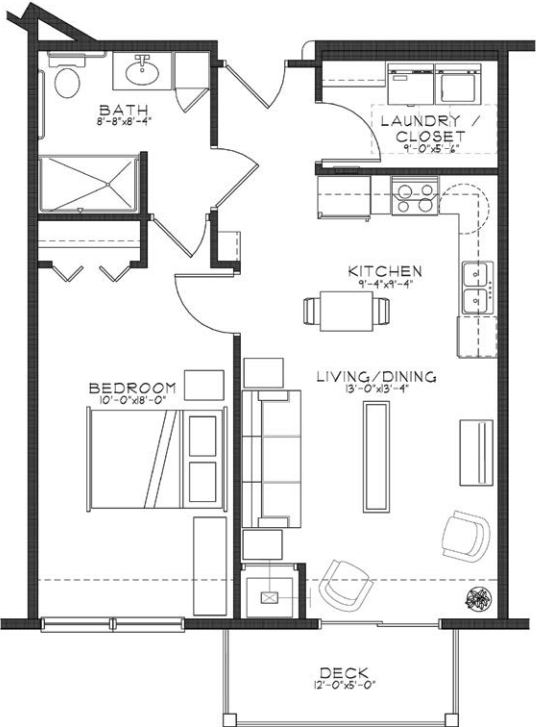
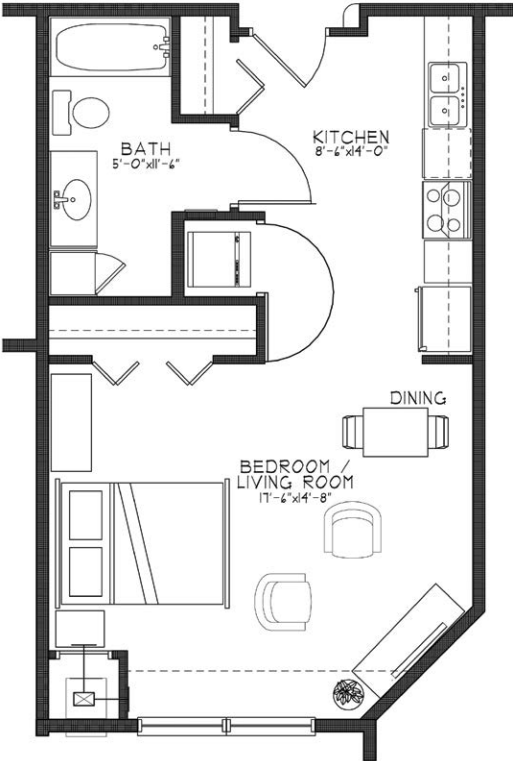
- Additional housekeeping
- Laundry service
- Transportation for shopping and outings
- Assistance with arranging transportation to medical and social service appointments
- Assistance with accessing community resources and social services
- Access to designated Physician or Nurse Practitioner for on-site services
- Coordination of specialized nursing and therapy visits
- Additional home care and hospice services available through Optage®
- Second occupant, \$800 plus personal care
- Response to urgent calls
- Guest dining
- Guest suites
- Underground parking
- Internet
- Upgrade cable television packages
- Pets are welcome (guidelines apply)
- Outpatient therapy — physical, occupational and speech therapy

## Distinctive Details

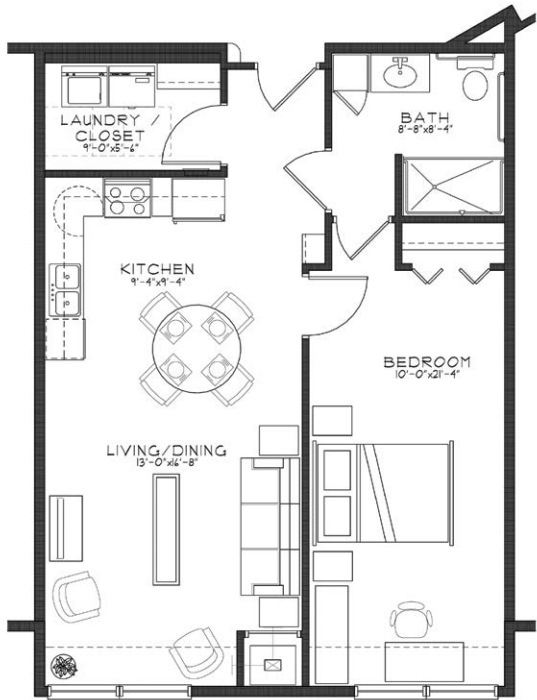
- Studio, one and two-bedroom apartment homes with several floor plans to choose from
- Many apartments include a den, balcony, and walk-in closet
- Private bath with safety features and a roll-in shower
- Individual climate control (heat and central air) in every apartment
- Stainless steel appliances and nine-foot ceilings

# Sample Floor Plans

**Aspen**  
Studio | 518 Sq. Ft.



**Cottonwood 1**  
One Bedroom plus Deck | 709 Sq. Ft.



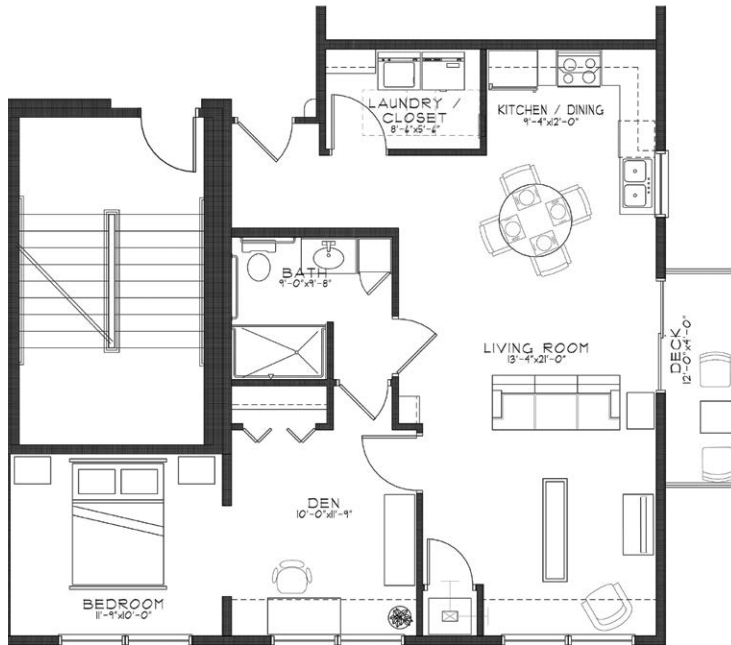
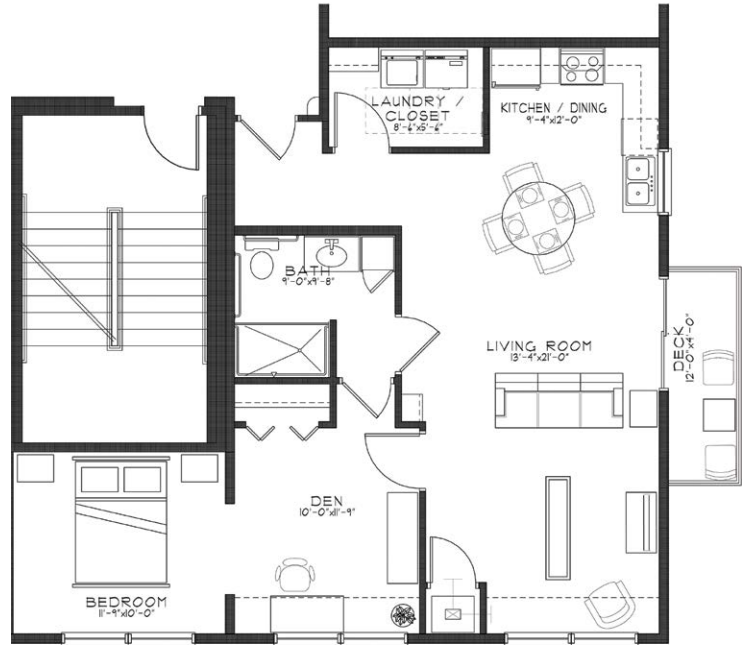
## Poplar

One Bedroom | 791 Sq. Ft.

**Oak**  
One Bedroom | 836 Sq. Ft.



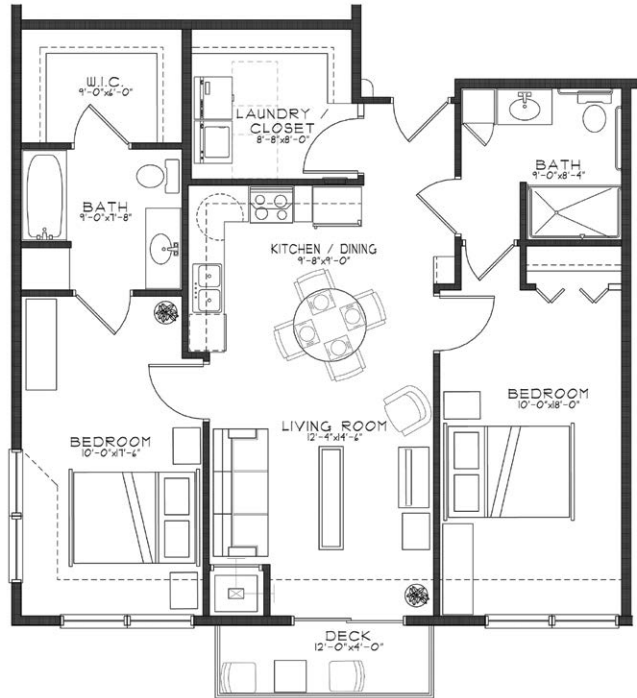
**Mulberry**  
One Bedroom plus Den and Deck  
913 Sq. Ft.



**Juniper**  
One Bedroom plus Den | 1,012 Sq. Ft.

## Hickory

Two Bedroom | 1,060 Sq. Ft.



## Willow

Two Bedroom | 1,169 Sq. Ft.



Floor plans, features and amenities are subject to change without notice. Stated dimensions and square footage are approximate. Additional floor plans may be available. Please ask about availability.

At Highland Path, we know each individual is just that—an individual. And our services reflect that philosophy. Select from a broad range of options depending on your personal preferences. It's all based on the principle of choice.  
**And the choice is yours.**

## Monthly Personal Care Fee Ranges\*

Points from Assessment	Monthly Fee
0–9	\$460 (required)
10–101	\$920–\$2,300
102–239	\$2,760–\$4,560
240–354	\$4,770–\$5,610
355–492	\$5,820–\$6,870

*\*The care fee ranges above are for estimating purposes only.*

## Included in Your Personal Care Fees:

- Initial and ongoing nursing assessments
- Scheduled nursing hours and on-call nursing available for staff consultation
- Nurse liaison with health care professionals
- Nurse scheduling of lab draws
- Nurse maintaining clinical record information
- Daily reassurance check

## Monthly Rental Fee

Apartment	Sq. Ft.	Rate
Studio	206–594	\$2,331–\$3,775
One Bedroom	686–1,012	\$3,930–\$4,615
Two Bedroom	1,060–1,169	\$4,975–\$5,035

## Assisted Living Service Fees

In addition to the monthly rental fee, a monthly personal care fee for assisted living services is required based on the amount of care provided. The following steps help to assess your care needs and guide you through the residency process:

**Step 1: Reserve an apartment at Highland Path.** We will help you through the reservation process and provide you with essential information in preparation for the following steps.

**Step 2: Schedule an assisted living care assessment appointment.** A nurse will meet with you to complete an initial assessment and help create a personalized care plan. The assessment will include a review of your individualized needs and a recommendation of services that could be provided to meet those needs. Each service is assigned a point value and the assessment will give you an estimated total number of points.\* To view the care assessment, scan the QR code or visit [HighlandPathPHS.org](http://HighlandPathPHS.org) and click on "Resident Documents."



**Step 3: Schedule a residency agreement appointment.** We will review the residency agreement, payment information and other resources with you. Once the residency agreement process is complete, your move-in date will be confirmed.

*Pricing subject to change. Residency agreement available upon request.*



**651-294-6500**

1925 Norfolk Avenue  
St. Paul, MN 55116

**HighlandPathPHS.org**

## Living Options

- Senior apartments
- Assisted living apartments
- Assisted living memory care residence

*Due to COVID-19 or other future circumstance, some features may be temporarily unavailable or offered in a different way. We anticipate features will become available in original form once it is prudent to do so. Presbyterian Homes & Services (PHS) communities comply with applicable federal civil rights laws and do not discriminate on the basis of race, color, national origin, age, disability or sex.*

PresHomes.org

Español (Spanish): *Llame al 1-844-558-6125*

Hmoob (Hmong): *Hu rau 1-844-558-6125*

Tagalog (Filipino): *Tumawag sa 1-844-558-6125*

Professional management by PHS Management, LLC © 2021 Presbyterian Homes and Services  
All faiths welcome. Equal housing opportunity.

9/23 

 **presbyterian  
homes & services**  
*freedom to live well®*