



# Mill Pond

## The Gables

Long Term Nursing Care

Skilled Nursing Care

# Welcome to Mill Pond

Imagine a place where residents receive quality care while exercising their freedom to decide what their “best day” includes.

At Mill Pond, each day here unfolds according to the resident’s wishes through Liberty Personally Designed Living™, an innovative approach to care. Whether it be rising at their leisure and enjoying a late breakfast or spending an afternoon watching football on television accompanied by their favorite snacks, residents orchestrate the lifestyle of their design, celebrating their independence and dignity.

---

## Care Options

### Long Term Nursing Care

Recognizing the connection between mind, body and spirit, this community provides so much more than round-the-clock health care. Therapeutic recreation, exercise, music and spiritual activities are all an integral part of life here. Our specially trained on-site care team is here to meet your physical and/or cognitive needs, supported by the expertise of visiting professionals and the cheer and inspiration of devoted volunteers. Family involvement is welcomed and strongly encouraged.

### Short Stay Recovery (Skilled Nursing Care)

For those who are in transition from home or hospital, this is the place to heal and recover. Benefit from the experience of our clinical team within pleasant surroundings, while receiving services designed to relieve the stress of recovery and restore you to your full potential.

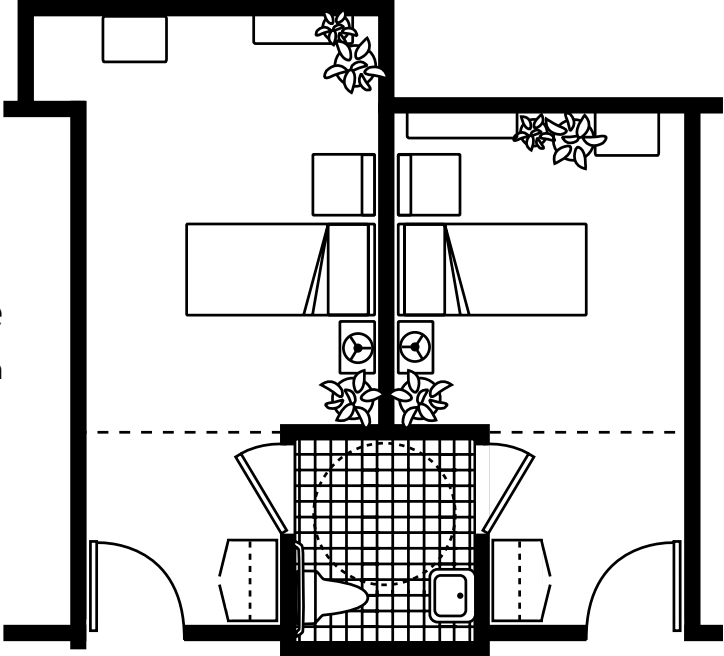
## Matching Care Settings to Your Needs

Within this community, there may be designated areas for specialty care, such as intensive care needs and dementia care. If your needs change during your stay, you may be relocated to the area that is better designed to meet your needs. For example, if your condition improves, you may be moved to an area that serves those with less need for skilled nursing services.

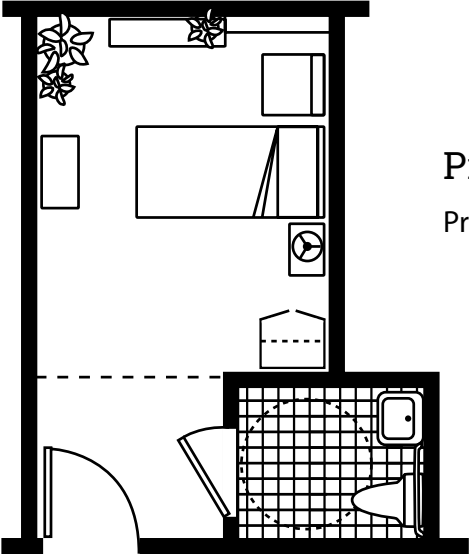


# Sample Floor Plans

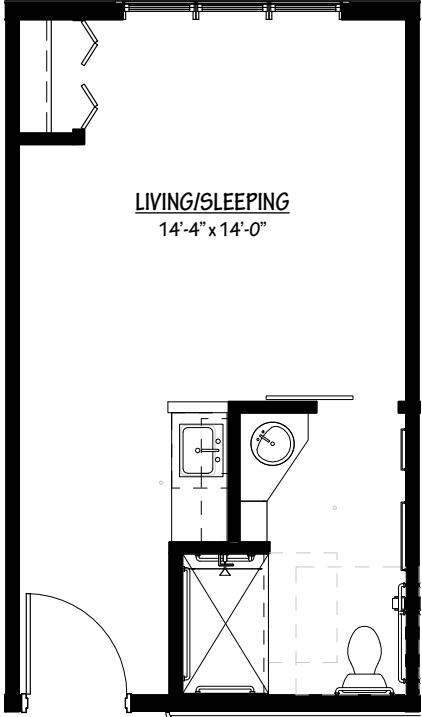
Private Suite  
Semi-Private Half Bath

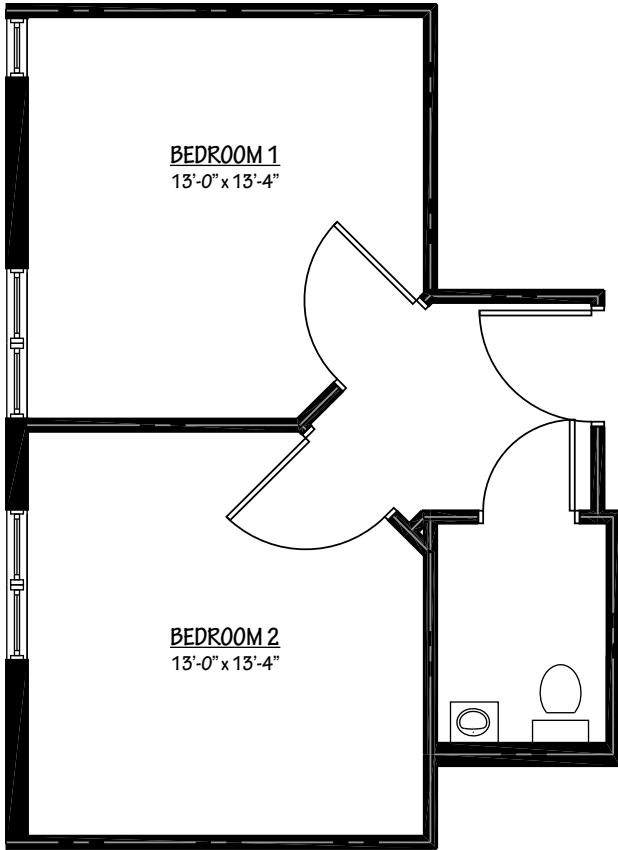


Private Suite  
Private Half Bath

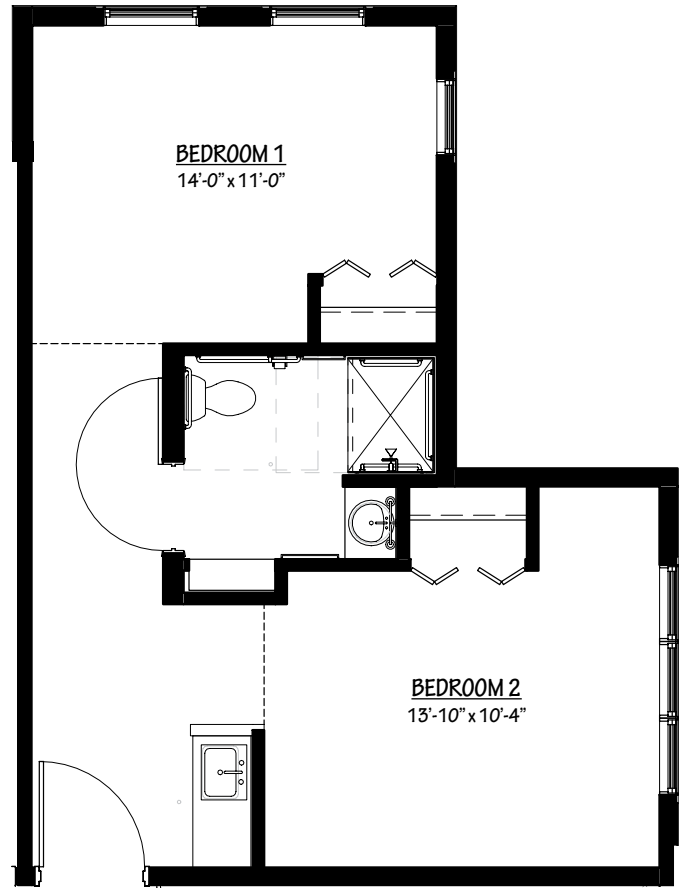


Private Suite  
Private Full Bath





**Private Suite**  
Semi-Private Half Bath



**Semi-Private Suite**  
Semi-Private Full Bath



Mill Pond  
Care Center  
515-964-2273

*Floor plans, features and amenities are subject to change without notice. Stated dimensions and square footage are approximate. Additional floor plans may be available. Please ask about availability.*





## Included Amenities

- Furnished private or semi-private suite
- Private, safety-equipped bath
- Whirlpool bath
- Flexible dining hours with three daily meals and snacks served in the family dining room
- Special diets
- Light housekeeping and linen change
- Laundry service
- Social and recreational programs
- 24-hour nursing care
- 24-hour on-call Physician
- Registered Dietician
- Social Worker
- Pastoral care
- Expanded cable
- Wi-Fi service
- Individually controlled heat and air conditioning
- Priority access to other Presbyterian Homes & Services living and care options based on availability

## Other Conveniences

*Additional fees may apply*

- Access to designated Physician and Nurse Practitioner for on-site services
- Physical, occupational and speech therapy
- Visiting Dentist, Podiatrist and Ophthalmologist
- Telephone service
- Wheelchair and other assistive device rental
- Access to on-site amenities and programs

## Payment Options

- Medicare
- Medical Assistance
- Various HMOs
- Private insurance
- Long-Term Care insurance
- Private funds

## Rate Information

Suite Type	Daily Rate
<b>Long Term Nursing Care</b>	
Semi-Private Suite	\$330
Private Suite	\$340–\$350
<b>Skilled Nursing Care</b>	\$435*

\*Rates reflect private payment or payment by those who do not have Medicare coverage. A Medicare eligible beneficiary may be entitled to up to 100 days in a skilled nursing center per illness. Medicare pays 100% of all services, supplies, and drugs for the first twenty (20) days for a resident who qualifies under Medicare level of care guidelines. For the twenty-first (21st) through hundredth (100th) day, Medicare requires a co-insurance amount to be paid by the resident's supplemental insurance. If there is no supplemental insurance, the resident will be responsible for the co-payment.





**515-964-2273**

1201 SE Mill Pond Court  
Ankeny, IA 50021

**MillPondPHS.org**

## Living Options

- Senior apartments
- Assisted living apartments
- Assisted living memory care residence
- Care center

*Due to COVID-19 or other future circumstance, some features may be temporarily unavailable or offered in a different way. We anticipate features will become available in original form once it is prudent to do so. Presbyterian Homes & Services (PHS) communities comply with applicable federal civil rights laws and do not discriminate on the basis of race, color, national origin, age, disability or sex.*

PresHomes.org

Español (Spanish): *Llame al 1-844-558-6125*

Hmoob (Hmong): *Hu rau 1-844-558-6125*

Tagalog (Filipino): *Tumawag sa 1-844-558-6125*

Professional management by PHS Management, LLC © 2021 Presbyterian Homes and Services  
All faiths welcome. Equal housing opportunity.

9/23 

 **presbyterian  
homes & services**  
*freedom to live well®*