



Mill Pond
The Arbor
Assisted Living Memory Care

Welcome to Mill Pond

The Arbor memory care provides a vibrant neighborhood setting where dedicated staff serve the unique needs of each individual with warmth and compassion. Stimulating activities and personalized care assure families their loved one has the opportunity to live life to the fullest.

We believe that caring for the needs of those with dementia grants us an extraordinary opportunity for ministry. Our DOVE™ program is the culmination of many years of thoughtful consultation with staff, families, and leaders in the field of dementia research. DOVE™—Dementia Orientation Values Education—is a three-part approach to care that allows your loved one to receive the affirmation and reassurance they need.

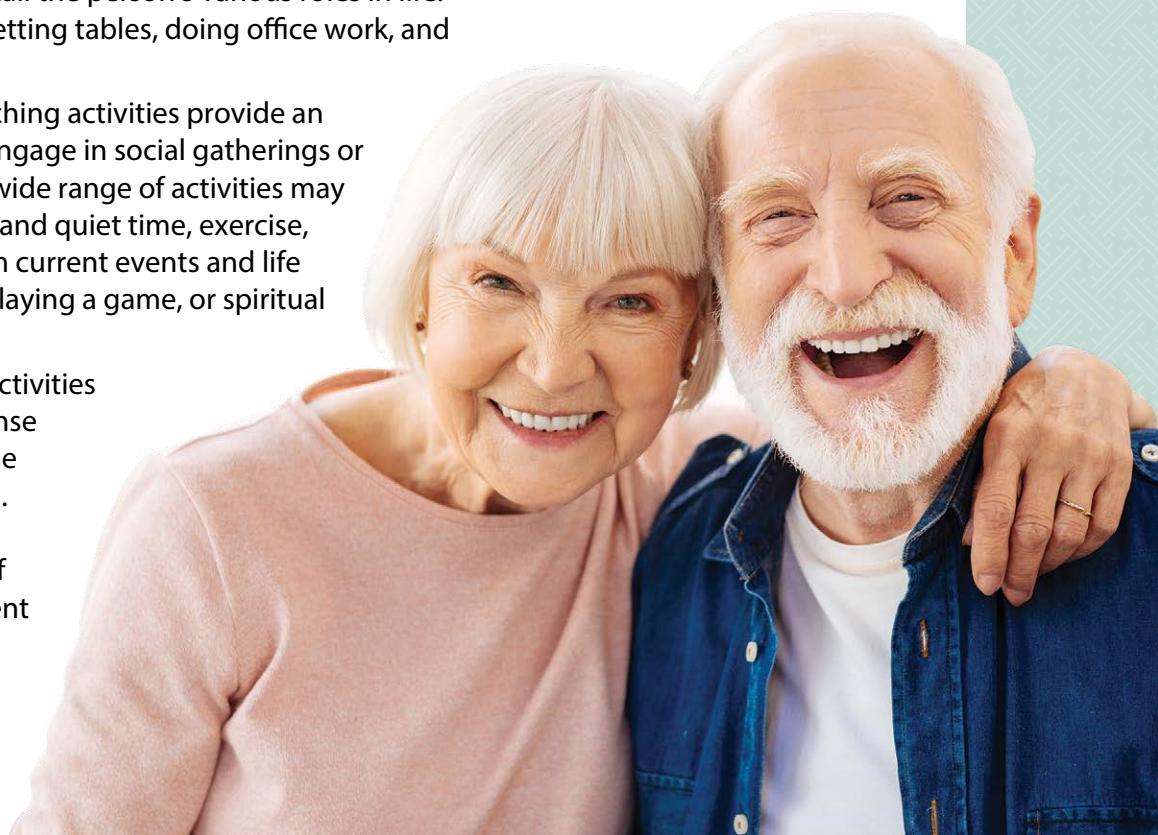
Our dove lapel pin designates staff that have completed special training. The dove, a symbol of the Holy Spirit, symbolizes how each person is fully remembered by Him. Even with loss of memory, the spirit remains intact.

The DOVE™ Program

We begin by assessing individual needs and creating a plan of care, and continue by supporting resident life-skills as well as involving and providing guidance to families. Encouraging independence and providing a sense of purpose, enjoyment, and success are our guiding principles.

Activities and specialized programming in three main areas are essential: life-skills, life-enrichment, and self-care.

- Life-skill activities help recall the person's various roles in life. Some examples include setting tables, doing office work, and sharing hobbies.
- Recreational and life-enriching activities provide an ongoing opportunity to engage in social gatherings or enjoy leisure activities. A wide range of activities may be offered such as leisure and quiet time, exercise, cognitive stimulation from current events and life review, baking, reading, playing a game, or spiritual reading and prayer.
- Participation in self-care activities gives each individual a sense of independence and pride and enhances self-esteem. Bathing, dressing and grooming are examples of cares in which each resident is encouraged to assist.



The Arbor strives to ensure the comfort and convenience of residents and their families. From our inclusive amenities to comprehensive care options, families gain peace of mind knowing their loved one has support with all the comforts of home.

Included Amenities

- Residential setting with controlled entrance
- Three daily meals and snacks served in the family dining room
- Weekly light housekeeping and linen change
- 24 hour on-site Resident Assistant staffing
- The DOVE™ program
- Pastoral care
- Wellness programs: intellectually stimulating programs, spiritual care services, group fitness classes, fitness center, volunteer opportunities
- Staffed social programs and events
- Outdoor courtyard with walking path
- Utilities (heat, electric, air conditioning, water, sewer, and trash)
- Expanded cable service
- Priority access to Presbyterian Homes & Services living and care options based on availability
- Smoke-free community

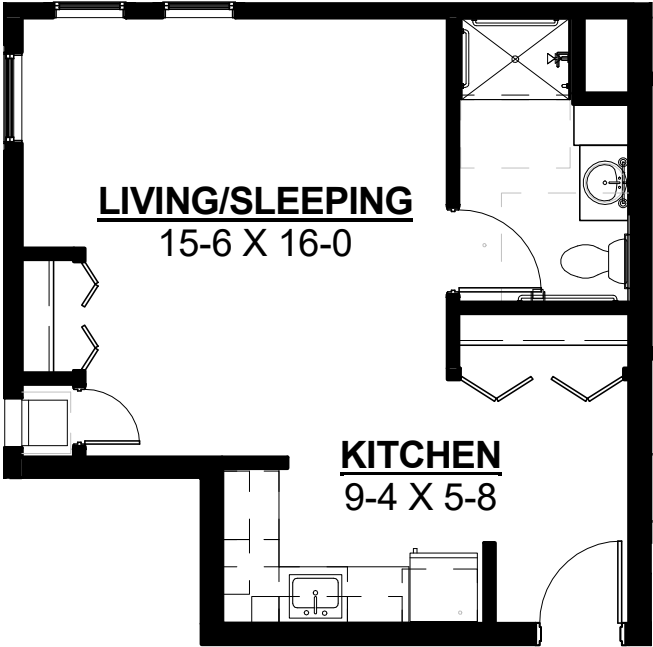
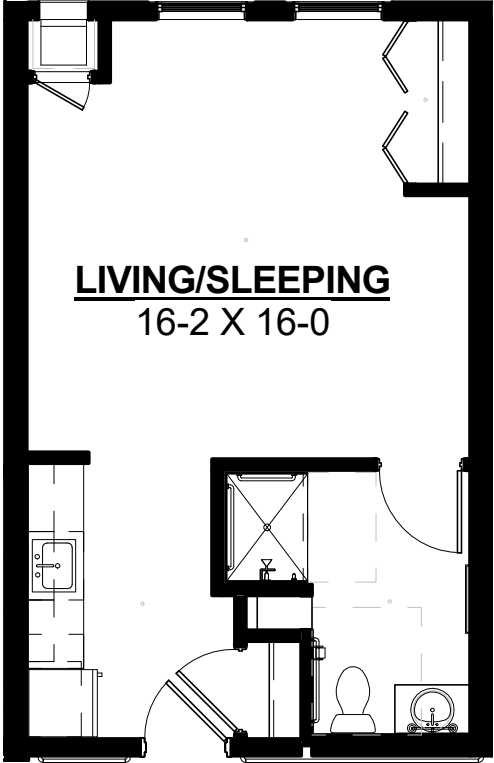
Other Conveniences

Additional fees may apply

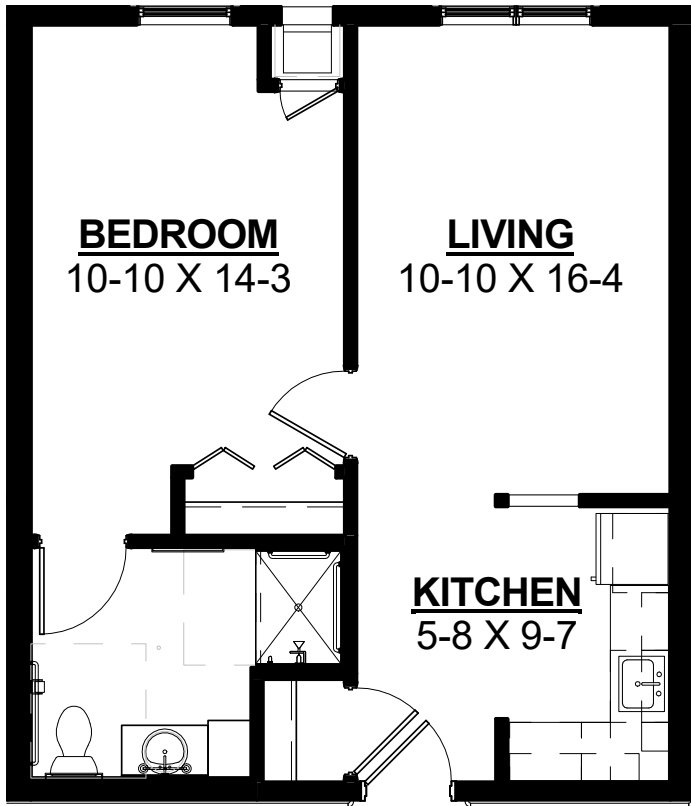
- Second occupant
- Assistance with arranging transportation to medical and social service appointments
- Assistance with accessing community resources and social services
- Additional Registered Nurse services, such as long term care insurance paperwork
- Additional loads of laundry
- Telephone service
- Guest dining
- Guest suite
- Outpatient therapy — physical, occupational and speech therapy

Sample Floor Plans

Axel
Studio | 460 Sq. Ft.

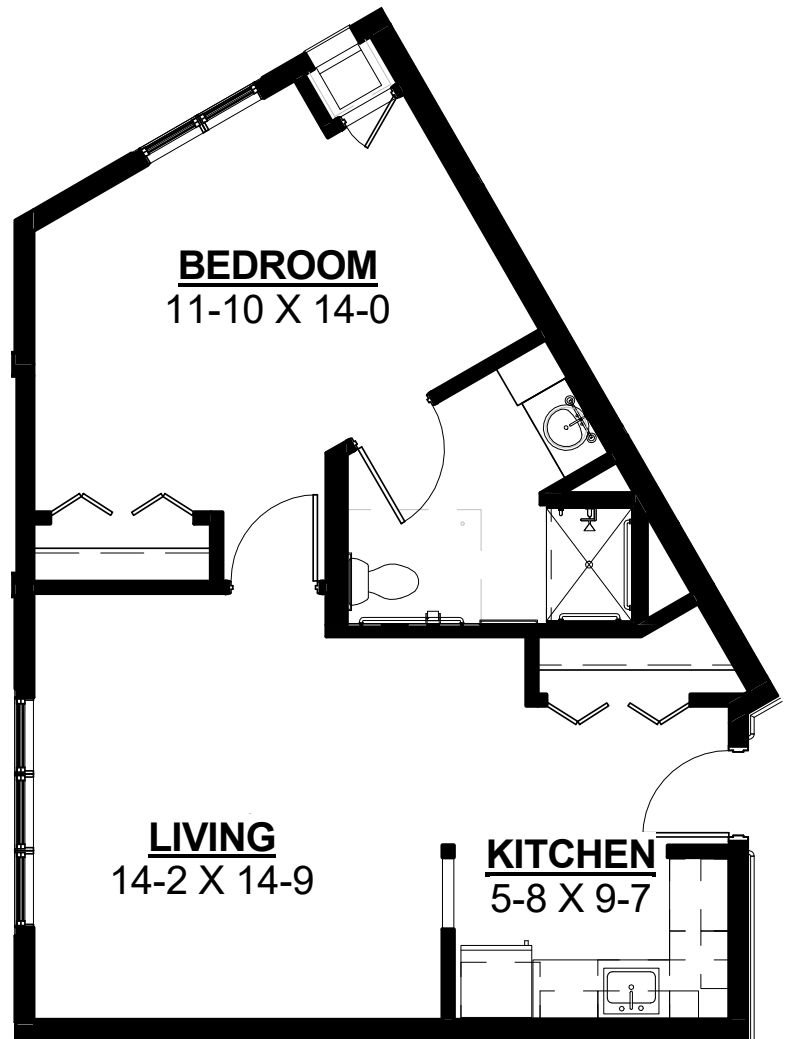


Barrel
Studio | 490 Sq. Ft.



Candy

One Bedroom | 620 Sq. Ft.



Cane

One Bedroom | 695 Sq. Ft.

Floor plans, features and amenities are subject to change without notice. Stated dimensions and square footage are approximate. Additional floor plans may be available. Please ask about availability. All apartments are unfurnished.

Personal Care Services

Engaging programs and comforting amenities are just the beginning of the services provided.

A nurse is on site five days a week and available to resident care staff by phone 24 hours/day. Resident care assistants are present 24 hours a day to assist with resident needs.

Prior to starting services, a nurse completes a comprehensive assessment and determines your personal care needs during the assessment. An Individual Service Plan is written in collaboration with you, your family and physician.

The following services are included in addition to the Individual Service Plan:

- Initial nursing assessment
- 24 hour on-site Resident Assistant staffing
- Medication management
- Reassurance and comfort care
- Escorts within the community
- Vital sign monitoring
- Nurse consultation with health care professionals as needed
- Nurse maintains clinical record
- Coordination of laboratory requests

At Mill Pond, we know each individual is just that—an individual. And our services reflect that philosophy. Select from a broad range of options depending on your personal preferences. It's all based on the principle of choice.
And the choice is yours.

Apartment Selection

Apartment	Sq. Ft.	Monthly Fee
Studio	460–490	\$6,425–\$6,640
One Bedroom	620–695	\$6,775–\$6,910

Pricing subject to change. Occupancy agreement available upon request.





515-964-2273

1201 SE Mill Pond Court
Ankeny, IA 50021

MillPondPHS.org

Living Options

- Senior apartments
- Assisted living apartments
- Assisted living memory care residence
- Care center

Due to COVID-19 or other future circumstance, some features may be temporarily unavailable or offered in a different way. We anticipate features will become available in original form once it is prudent to do so. Presbyterian Homes & Services (PHS) communities comply with applicable federal civil rights laws and do not discriminate on the basis of race, color, national origin, age, disability or sex.

PresHomes.org

Español (Spanish): *Llame al 1-844-558-6125*

Hmoob (Hmong): *Hu rau 1-844-558-6125*

Tagalog (Filipino): *Tumawag sa 1-844-558-6125*

Professional management by PHS Management, LLC © 2021 Presbyterian Homes and Services
All faiths welcome. Equal housing opportunity.

9/23 

 **presbyterian
homes & services**
freedom to live well®