



Oak Crest
Senior Apartments

Welcome to Oak Crest

At Oak Crest, your ideal residence is complemented by an assortment of conveniences and amenities to enrich your life.

Enjoy maintenance-free living and comfortable, convenient floor plans. Regardless of which plan you choose, it's sure to reflect your sense of style as you add your own personal touch.

Included Amenities

- Utilities (heat, water, sewer, and trash)
- Continental breakfast (Monday–Friday)
- Health and wellness clinic
- Pastoral care
- Laundry facilities
- Controlled entrance
- Wings® wellness intellectually stimulating programs, spiritual care services, group fitness classes, fitness center, volunteer opportunities
- Designated complimentary transportation to shopping and outings
- Month-to-month residency agreement
- Property tax and building insurance
- Apartment and building maintenance
- Lawn care and snow removal
- Priority access to other Presbyterian Homes & Services living and care options based on availability
- Smoke-free community

Other Conveniences

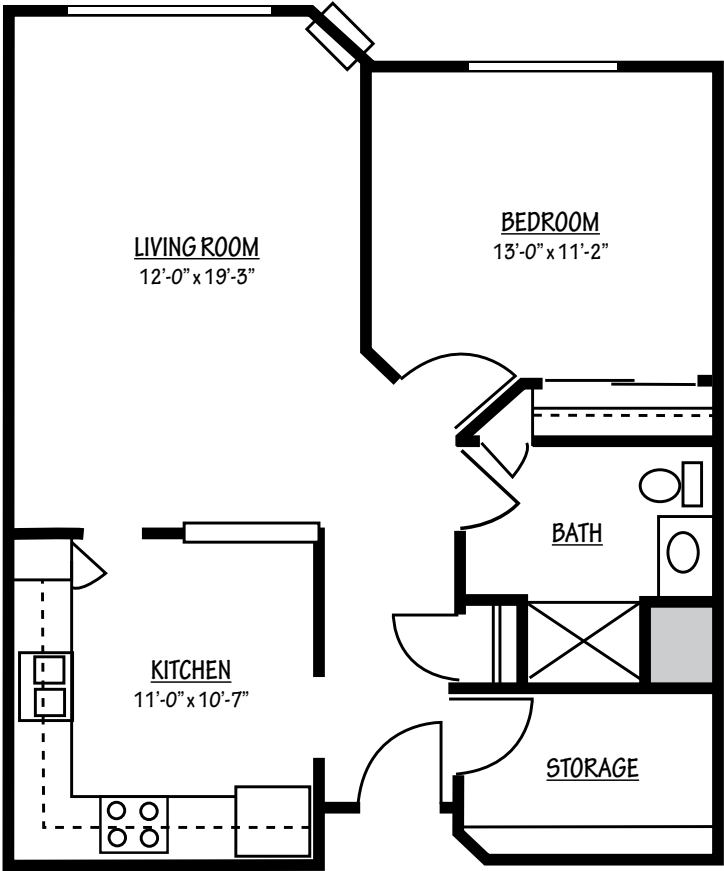
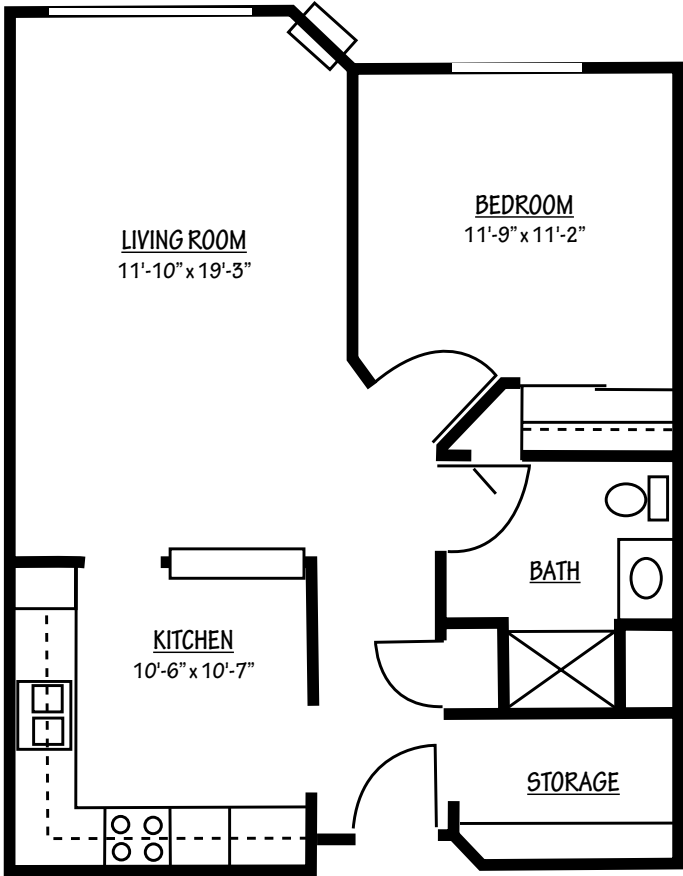
Additional fees may apply

- Electric service
- Telephone service
- Underground heated parking with car wash bay
- Transportation for outings
- Housekeeping
- Beauty salon/barber shop
- Guest suite
- Home delivered meals, home care and hospice services available through Optage®
- Pets are welcome (guidelines apply)

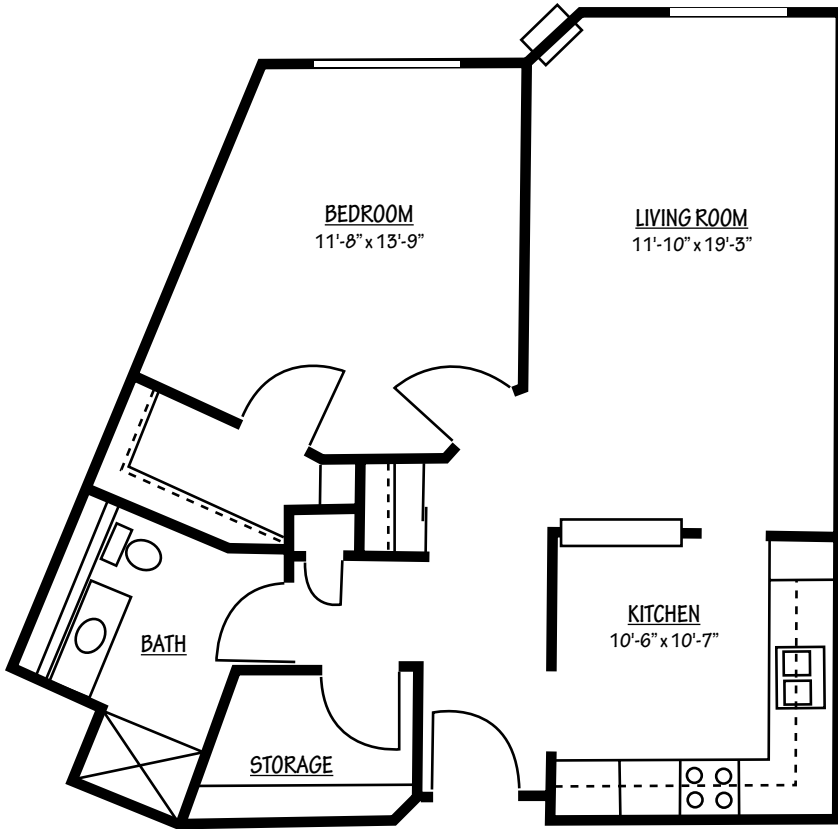


Sample Floor Plans

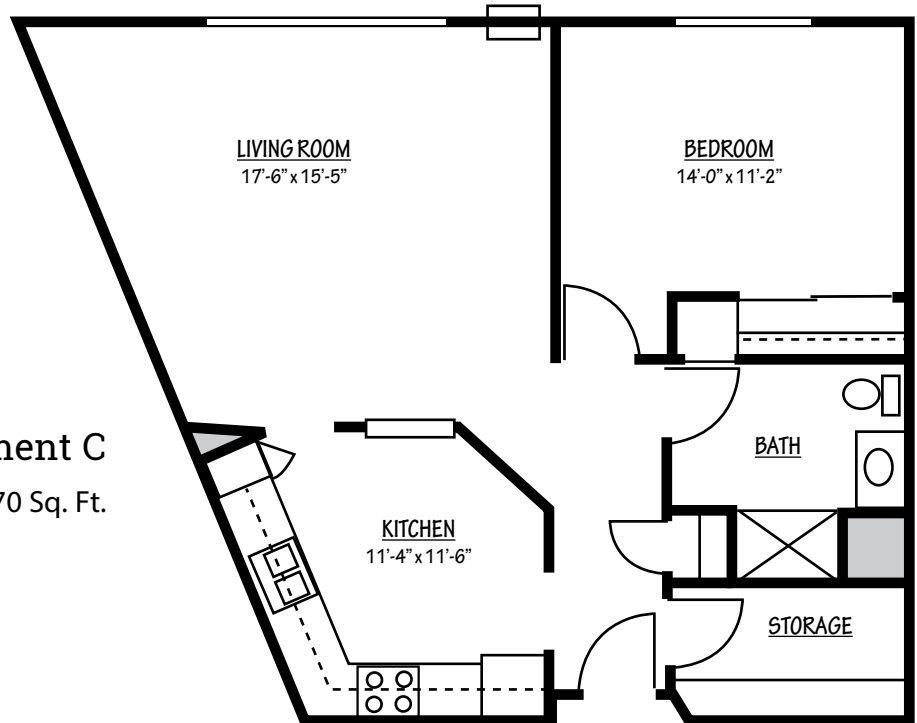
Apartment A
One Bedroom | 733 Sq. Ft.



Apartment G
One Bedroom | 772 Sq. Ft.



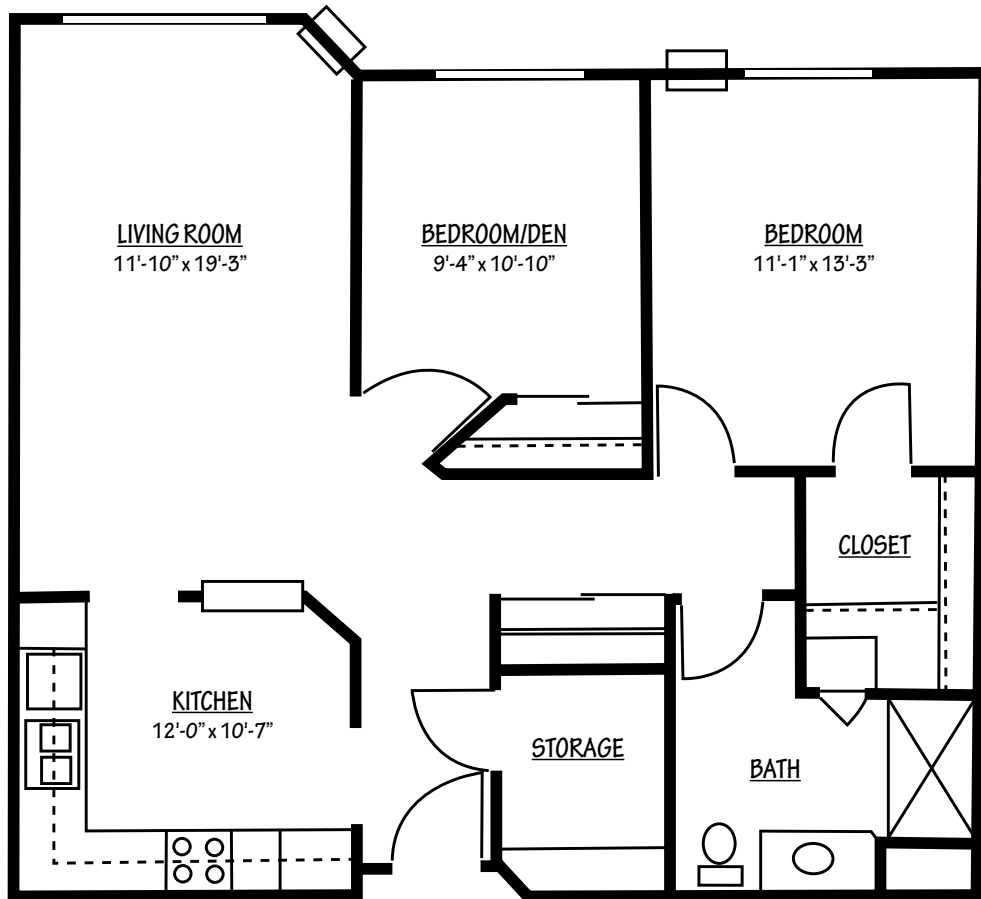
Apartment B
One Bedroom | 820 Sq. Ft.



Apartment C
One Bedroom | 870 Sq. Ft.

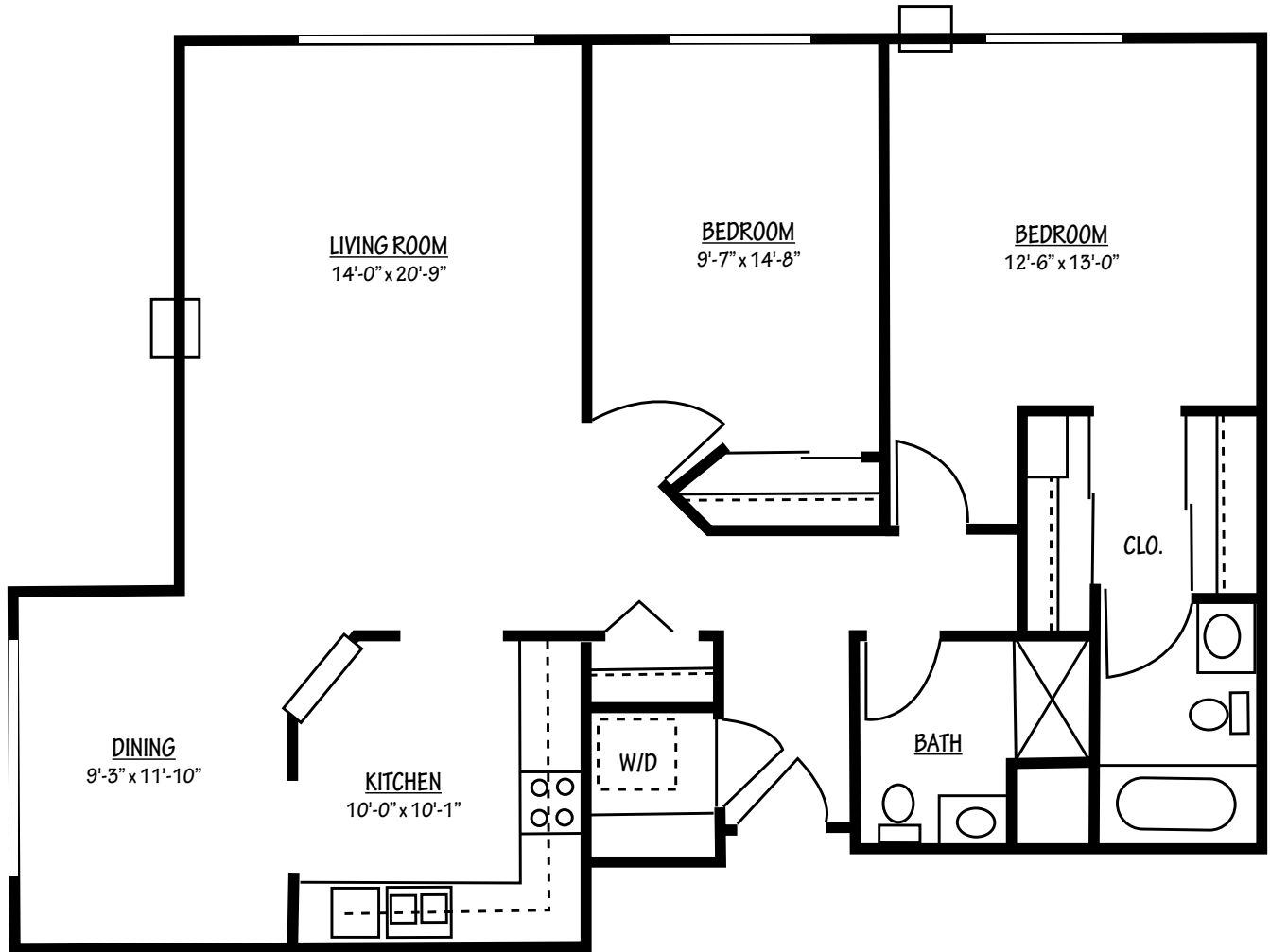
Apartment D

Two Bedroom | 1,002 Sq. Ft.



Apartment F

Two Bedroom/Two Bath | 1,219 Sq. Ft.



Floor plans, features and amenities are subject to change without notice. Stated dimensions and square footage are approximate. Additional floor plans may be available. Please ask about availability.

Our senior apartments offer maintenance-free living and comfortable floor plans with value and convenience. Nicely appointed common areas are well-suited for group events and casual gatherings. Social, recreational and volunteer opportunities help create a sense of community.

Distinctive Details

- Spacious apartment emphasizes bright, open rooms some with nine foot ceilings
- Kitchen with stove, self-cleaning oven, microwave, dishwasher (in most apartments), and refrigerator
- Oak cabinetry and millwork throughout
- Blinds on all windows
- Thoughtfully designed bathroom with either step-in/roll-in shower or tub
- Walk-in storage
- Individually controlled heat and air conditioning

Monthly Rental Fee

Apartment	Sq. Ft.	Rate
One Bedroom	725–883	\$1,190–\$1,545
Two Bedroom	1,002–1,219	\$1,620–\$1,995



Pricing subject to change. Residency agreement available upon request.



763-783-0150

1639 County Highway 10 NE
Spring Lake Park, MN 55432

OakCrestPHS.org

Due to COVID-19 or other future circumstance, some features may be temporarily unavailable or offered in a different way. We anticipate features will become available in original form once it is prudent to do so. Presbyterian Homes & Services (PHS) communities comply with applicable federal civil rights laws and do not discriminate on the basis of race, color, national origin, age, disability or sex.

PresHomes.org

Español (Spanish): *Llame al 1-844-558-6125*

Hmoob (Hmong): *Hu rau 1-844-558-6125*

Tagalog (Filipino): *Tumawag sa 1-844-558-6125*

Professional management by PHS Management, LLC © 2021 Presbyterian Homes and Services
All faiths welcome. Equal housing opportunity.

9/23 

 **presbyterian
homes & services**
freedom to live well®