



Presbyterian Homes of  
Bloomington  
Gideon Pond Terrace  
Senior Apartments

# Welcome to Presbyterian Homes of Bloomington

At Presbyterian Homes of Bloomington, your ideal residence is complemented by an assortment of conveniences and amenities to enrich your life.

Enjoy maintenance-free living and comfortable, convenient floor plans. Regardless of which plan you choose, it's sure to reflect your sense of style as you add your own personal touch.

---

## Included Amenities

- Light continental breakfast
- Weekly multi-denominational chapel services
- Wings® wellness intellectually stimulating programs, spiritual care services, group fitness classes, volunteer opportunities
- Large fitness center with pool, hot tub and locker rooms
- Library
- Beauty shop
- Designated complimentary transportation for monthly van outings
- Open public Wi-Fi
- Basic cable television service
- Utilities (heat, central air conditioning, water, sewer, and trash)
- Property tax and building insurance
- Apartment and building maintenance
- Lawn care and snow removal
- Controlled entrance
- Priority access to other Presbyterian Homes & Services living and care options based on availability
- Smoke-free community

## Other Conveniences

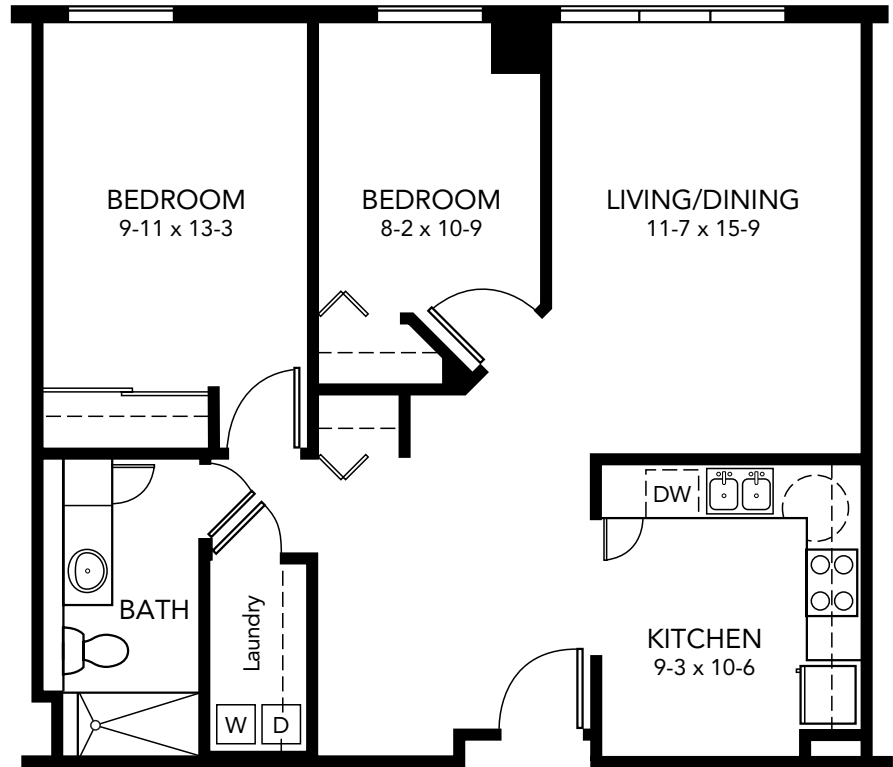
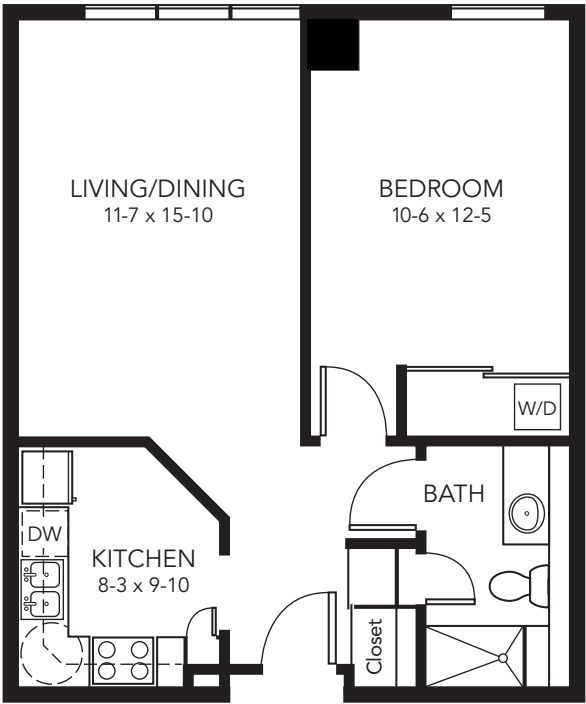
*Additional fees may apply*

- Underground parking with heated car wash bay
- Restaurant-style dining
- Designated transportation for shopping
- Housekeeping
- On-site therapy clinic
- Guest suites
- Telephone
- Electric
- Home care and hospice services available through Optage®
- Pets are welcome (guidelines apply)
- Private storage locker (based on availability)
- Outpatient therapy — physical, occupational and speech therapy



# Sample Floor Plans

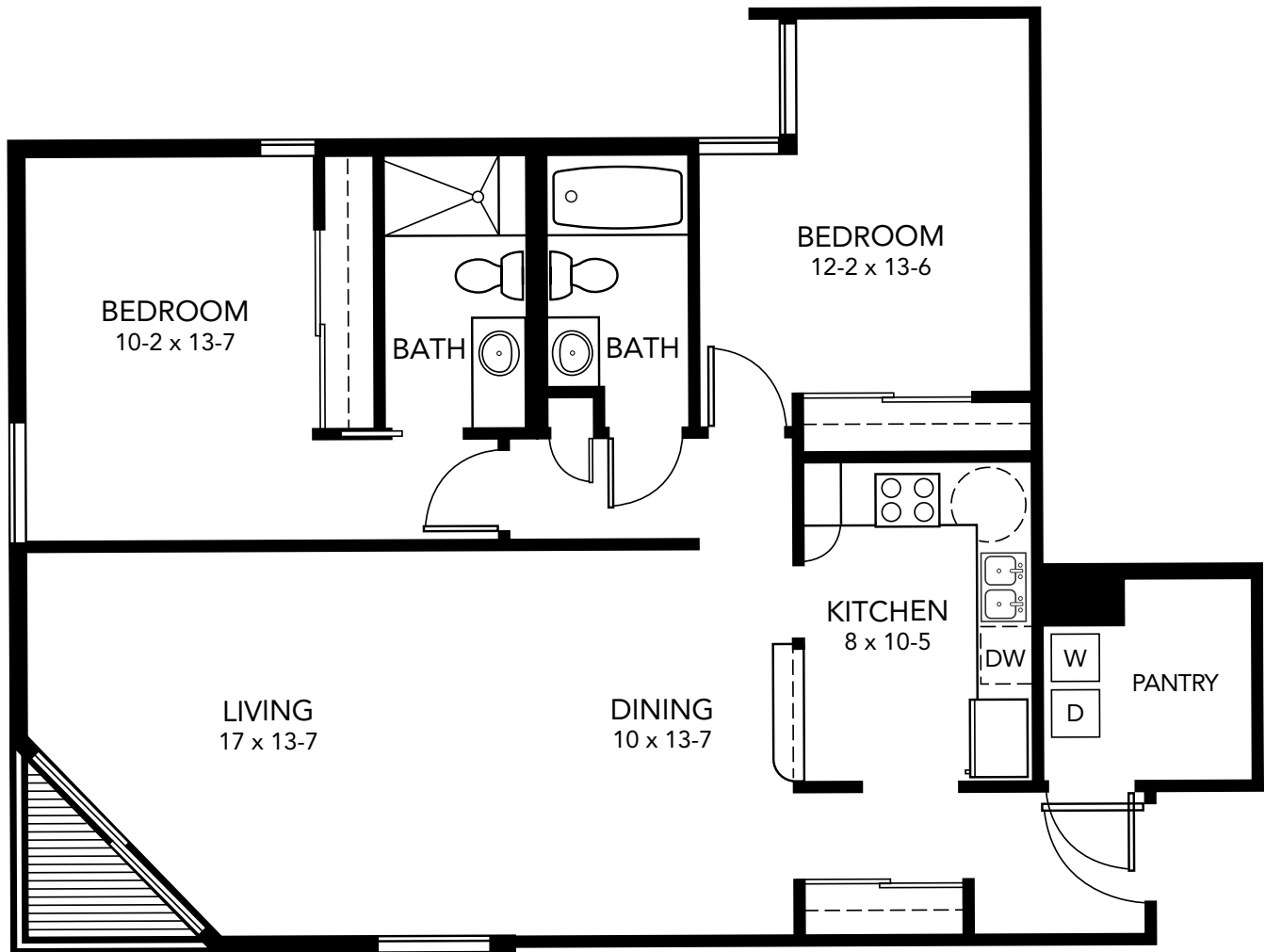
**Style A**  
One Bedroom | 621 Sq. Ft.



**Style C**  
Two Bedroom | 837 Sq. Ft.

## Style E

Two Bedroom/Two Bath | 1,126 Sq. Ft.



Presbyterian Homes of  
Bloomington

Senior Apartments  
952-948-3000

*Floor plans, features and amenities are subject to change without notice. Stated dimensions and square footage are approximate. Additional floor plans may be available. Please ask about availability.*

Our senior apartments offer maintenance-free living and comfortable floor plans with value and convenience. Nicely appointed common areas are well-suited for group events and casual gatherings. Social, recreational and volunteer opportunities help create a sense of community.

## Distinctive Details

- Bright open floor plans emphasize spacious rooms, some with vaulted ceilings
- Newly remodeled, fully equipped kitchen with refrigerator, electric range, oven, dishwasher, and microwave
- Washer and dryer in each apartment
- Newly remodeled bathroom with shower, adjustable showerhead and handrails
- Individually controlled heat and central air conditioning
- Some plans offer a balcony or first floor patio

## Monthly Rental Fee

Apartment	Sq. Ft.	Rate
One Bedroom	621–693	\$1,940–\$2,150
One Bedroom Plus	837–910	\$2,670–\$2,705
Two Bedroom	1,126–1,204	\$2,950–\$3,210

*Apartments with patios include an additional monthly fee of \$30.  
Pricing subject to change. Residency agreement available upon request.*





**952-948-3000**

9889 Penn Avenue South  
Bloomington, MN 55431

**PHSBloomington.org**

*Due to COVID-19 or other future circumstance, some features may be temporarily unavailable or offered in a different way. We anticipate features will become available in original form once it is prudent to do so. Presbyterian Homes & Services (PHS) communities comply with applicable federal civil rights laws and do not discriminate on the basis of race, color, national origin, age, disability or sex.*

PresHomes.org

Español (Spanish): Llame al 1-844-558-6125

Hmoob (Hmong): Hu rau 1-844-558-6125

Tagalog (Filipino): Tumawag sa 1-844-558-6125

Professional management by PHS Management, LLC © 2021 Presbyterian Homes and Services  
All faiths welcome. Equal housing opportunity.

## Living Options

- Senior apartments
- Senior subsidized apartments
- Assisted living apartments
- Assisted living subsidized apartments
- Assisted living memory care
- Transitional care
- Care center
- Care center memory care

 **presbyterian  
homes & services**  
*freedom to live well®*