



Shorewood Landing

The Commons

Assisted Living

Welcome to Shorewood Landing

For a setting that offers freedom combined with the comfort of knowing supportive services are available, choose The Commons assisted living.

Shape your daily life as you desire with the support of Liberty Personally Designed Living™, an innovative approach to personal care and assistance. Nicely appointed common areas are well-suited for group or casual gatherings, while social and recreational opportunities create a sense of community.

Included Amenities

- Fitness center/classes
- Library
- Outdoor community areas
- Community room
- Activities
- Three meals daily served restaurant style
- Urgent call system
- Basic cable television service
- Month-to-month residency agreement
- Smoke-free community
- Interior and exterior home maintenance
- Controlled entrance
- Weekly light housekeeping and linen change
- Pastoral care
- Open public Wi-Fi
- Utilities (heat, electric, central air conditioning, water, sewer, and trash)
- Priority access to other Presbyterian Homes & Services living and care options based on availability



Other Conveniences

Additional fees may apply

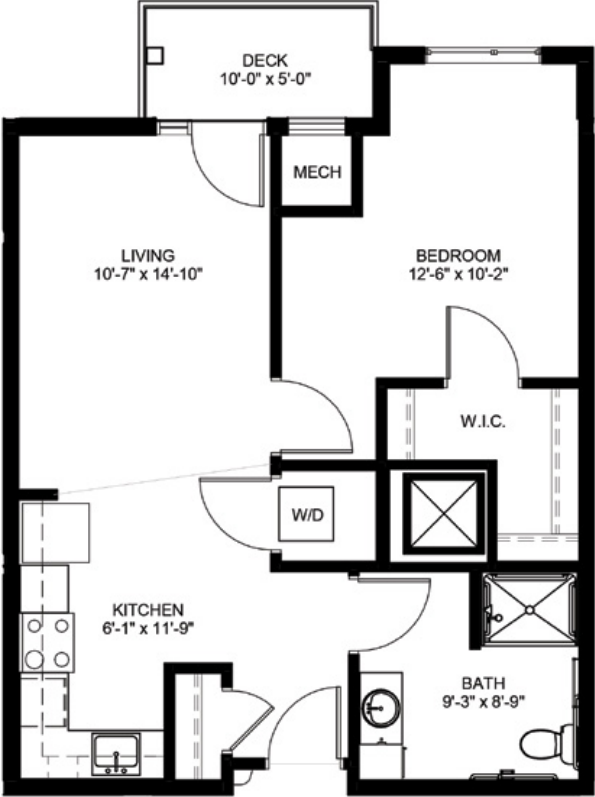
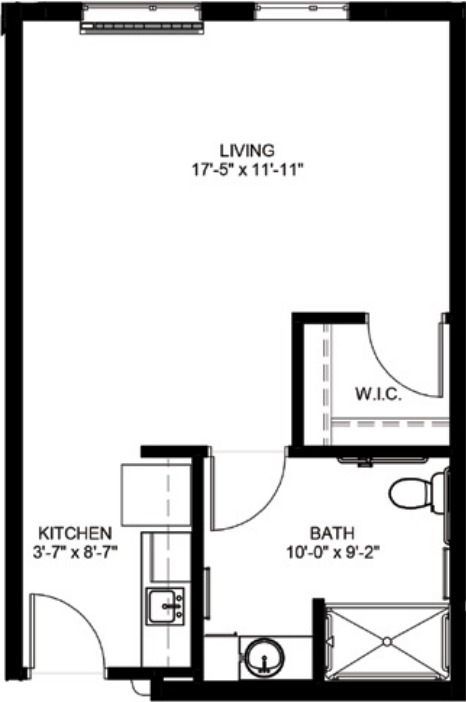
- Indoor parking with electric vehicle charging station
- Storage units
- Individually tailored health and personal care with staff on site 24-hours per day
- Transportation for shopping and outings
- Additional home care and hospice services available through Optage®
- Second occupant, \$1,000 plus personal care
- Response to urgent calls
- Additional housekeeping
- Assistance with accessing community resources and services
- Guest dining
- Guest suites
- Salon services
- Catered events
- Pets are welcome (guidelines apply)

Distinctive Details

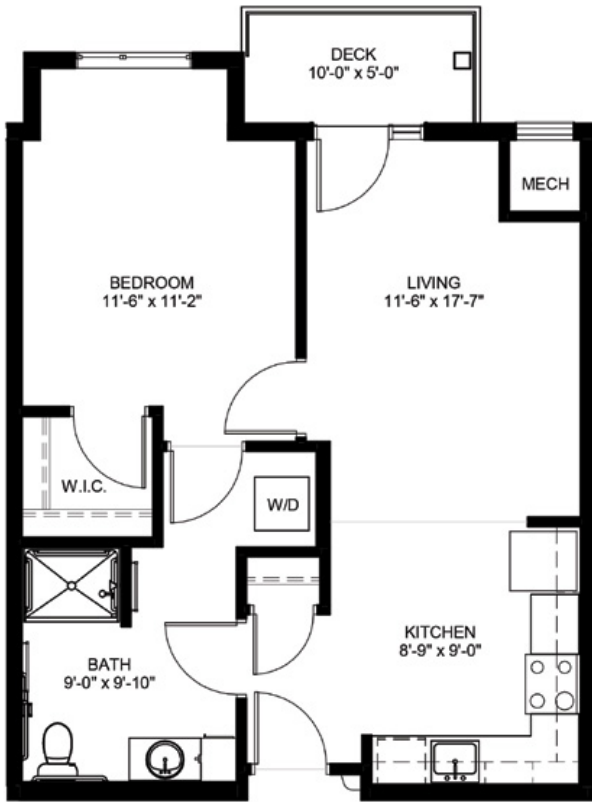
- Studio, one and two-bedroom apartment homes with several floor plans to choose from
- Many apartments have dens, balconies, and walk-in closets
- Private bath with safety features and a roll-in shower
- Individual climate control (heat and central air) in every apartment
- Fully equipped kitchens including stainless steel appliances, granite countertops and nine-foot ceilings
- Washers and dryers in each unit
- Extra storage

Sample Floor Plans

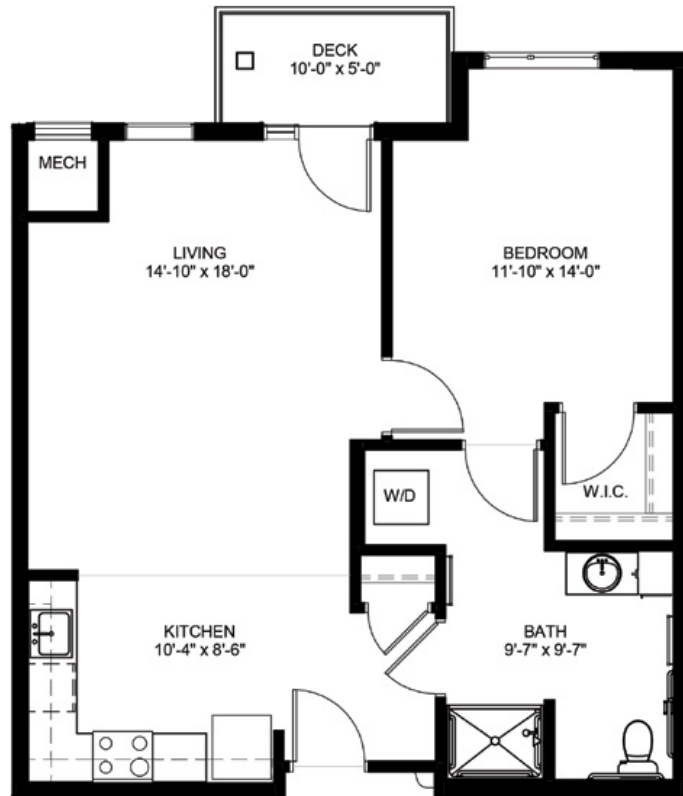
Studio
490 Sq. Ft.



One Bedroom
660 Sq. Ft.



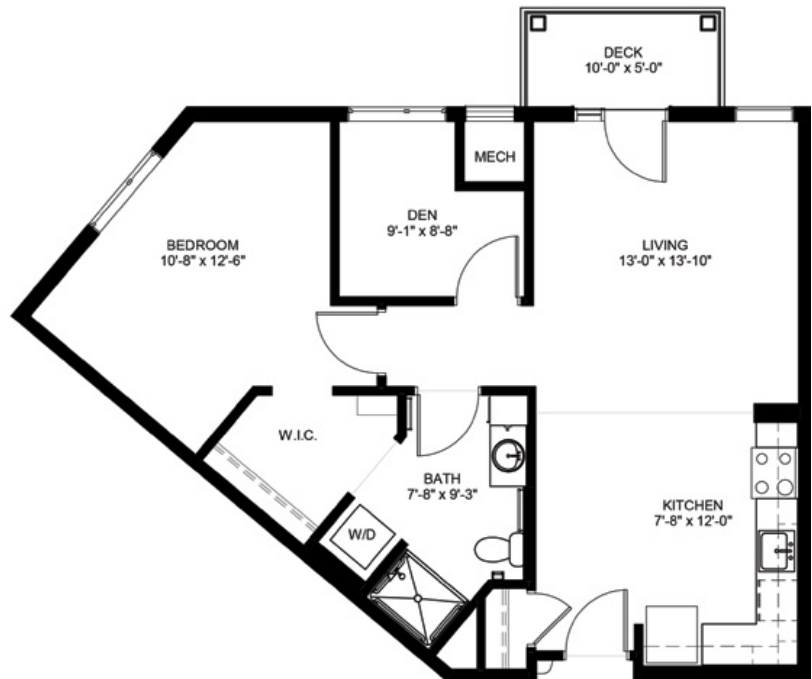
One Bedroom
690 Sq. Ft.



One Bedroom
790 Sq. Ft.

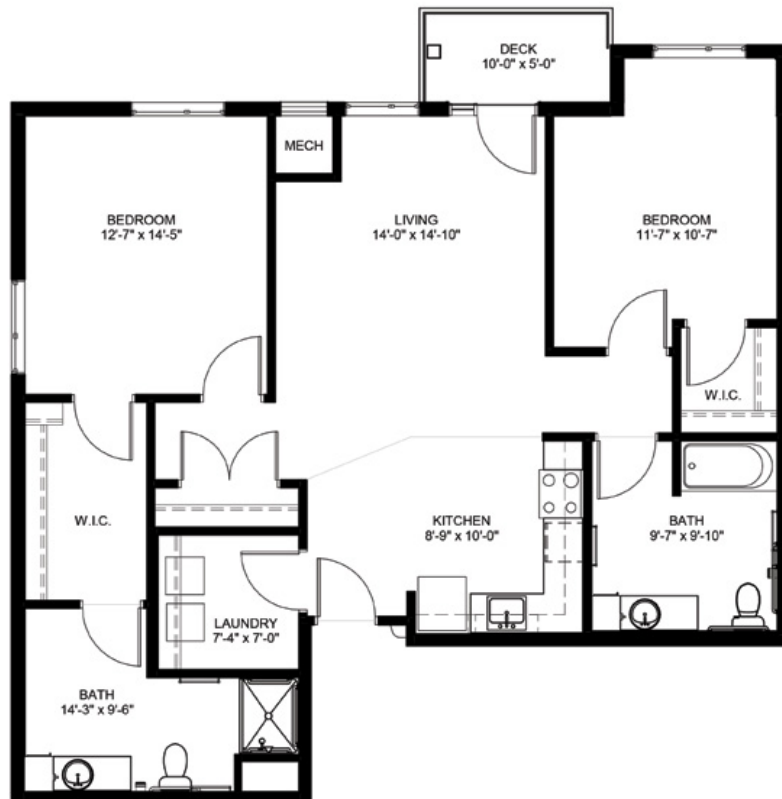
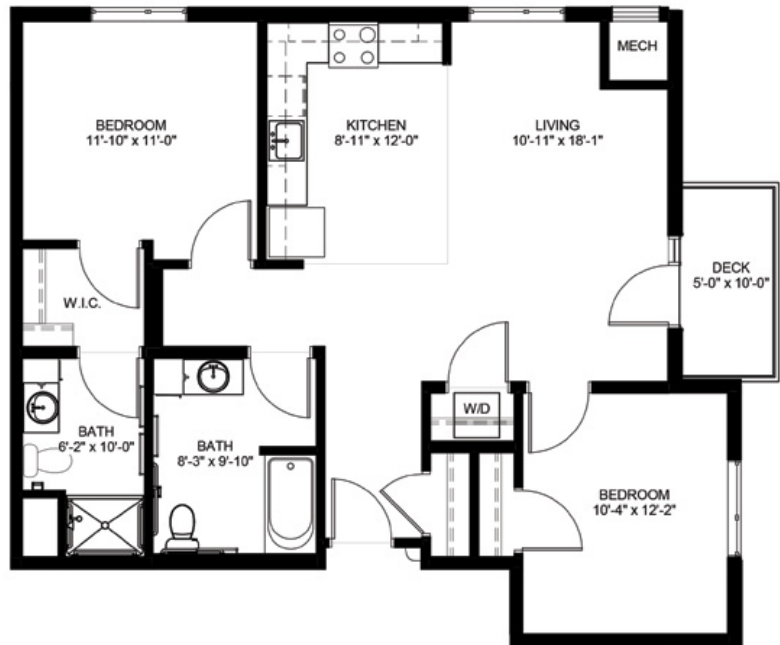


One Bedroom
910 Sq. Ft.



One Bedroom plus Den
840 Sq. Ft.

Two Bedroom
990 Sq. Ft.



Two Bedroom
1,245 Sq. Ft.

Floor plans, features and amenities are subject to change without notice. Stated dimensions and square footage are approximate. Additional floor plans may be available. Please ask about availability.

At Shorewood Landing, we know each individual is just that—an individual. And our services reflect that philosophy. Select from a broad range of options depending on your personal preferences. It's all based on the principle of choice. **And the choice is yours.**

Monthly Personal Care Fee Ranges*

Points from Assessment	Monthly Fee
0–9	\$460 (required)
10–101	\$920–\$2,300
102–239	\$2,760–\$4,560
240–354	\$4,770–\$5,610
355–492	\$5,820–\$6,870

*The care fee ranges above are for estimating purposes only.

Included in Your Personal Care Fees:

- Initial and ongoing nursing assessments
- Scheduled nursing hours and on-call nursing available for staff consultation
- Nurse liaison with health care professionals
- Nurse scheduling of lab draws
- Nurse maintaining clinical record information
- Daily reassurance check

Monthly Rental Fee

Apartment	Sq. Ft.	Rate
Studio	490	\$3,990
One Bedroom	660–910	\$4,300–\$5,060
One Bedroom plus Den	840–1,040	\$4,845–\$5,130
Two Bedroom	990–1,245	\$6,105–\$6,410

Assisted Living Service Fees

In addition to the monthly rental fee, a monthly personal care fee for assisted living services is required based on the amount of care provided. The following steps help to assess your care needs and guide you through the residency process:

Step 1: Reserve an apartment at Shorewood Landing. We will help you through the reservation process and provide you with essential information in preparation for the following steps.

Step 2: Schedule an assisted living care assessment appointment. A nurse will meet with you to complete an initial assessment and help create a personalized care plan. The assessment will include a review of your individualized needs and a recommendation of services that could be provided to meet those needs. Each service is assigned a point value and the assessment will give you an estimated total number of points.* To view the care assessment, scan the QR code or visit ShorewoodLandingPHS.org and click on "Resident Documents."



Step 3: Schedule a residency agreement appointment. We will review the residency agreement, payment information and other resources with you. Once the residency agreement process is complete, your move-in date will be confirmed.

Pricing subject to change. Residency agreement available upon request.



952-401-7444

6000 Chaska Road
Shorewood, MN 55331

ShorewoodLandingPHS.org

Living Options

- Senior apartments
- Assisted living apartments
- Assisted living memory care residence

Due to COVID-19 or other future circumstance, some features may be temporarily unavailable or offered in a different way. We anticipate features will become available in original form once it is prudent to do so. Presbyterian Homes & Services (PHS) communities comply with applicable federal civil rights laws and do not discriminate on the basis of race, color, national origin, age, disability or sex.

PresHomes.org

Español (Spanish): *Llame al 1-844-558-6125*

Hmoob (Hmong): *Hu rau 1-844-558-6125*

Tagalog (Filipino): *Tumawag sa 1-844-558-6125*

Professional management by PHS Management, LLC © 2021 Presbyterian Homes and Services
All faiths welcome. Equal housing opportunity.

9/23 

 **presbyterian
homes & services**
freedom to live well®