



Towner Crest

Senior Apartments

Welcome to Towner Crest

At Towner Crest, your ideal residence is complemented by an assortment of conveniences and amenities to enrich your life.

Enjoy maintenance-free living and comfortable, convenient floor plans. Regardless of which plan you choose, it's sure to reflect your sense of style as you add your own personal touch.

Included Amenities

- Utilities (heat, electric, central air conditioning, water, sewer, and trash)
- Public Wi-Fi
- Controlled entrance
- Basic cable television service
- Telephone service
- Continental breakfast 7 days/week
- Designated complimentary transportation to shopping and outings
- Wings® Wellness: intellectually stimulating programs, spiritual care services, group fitness classes, fitness center, volunteer opportunities
- Pastoral care
- Health and wellness clinic
- Property tax and building insurance
- Apartment and building maintenance
- Lawn care and snow removal
- Priority access to other Towner Crest and Presbyterian Homes & Services living and care options based on availability
- Month-to-month residency agreement
- Access to Town Center amenities and programs
- Smoke-free community

Other Conveniences

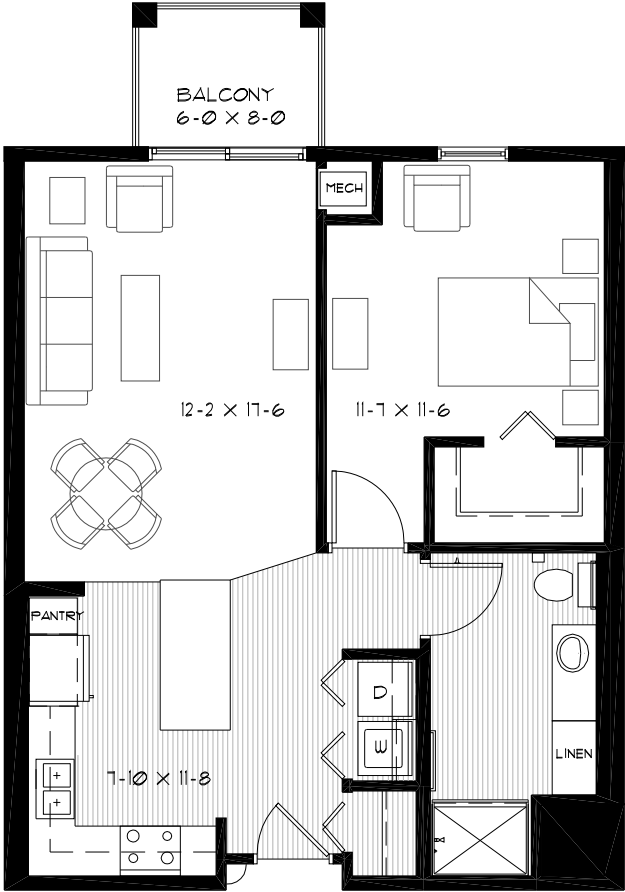
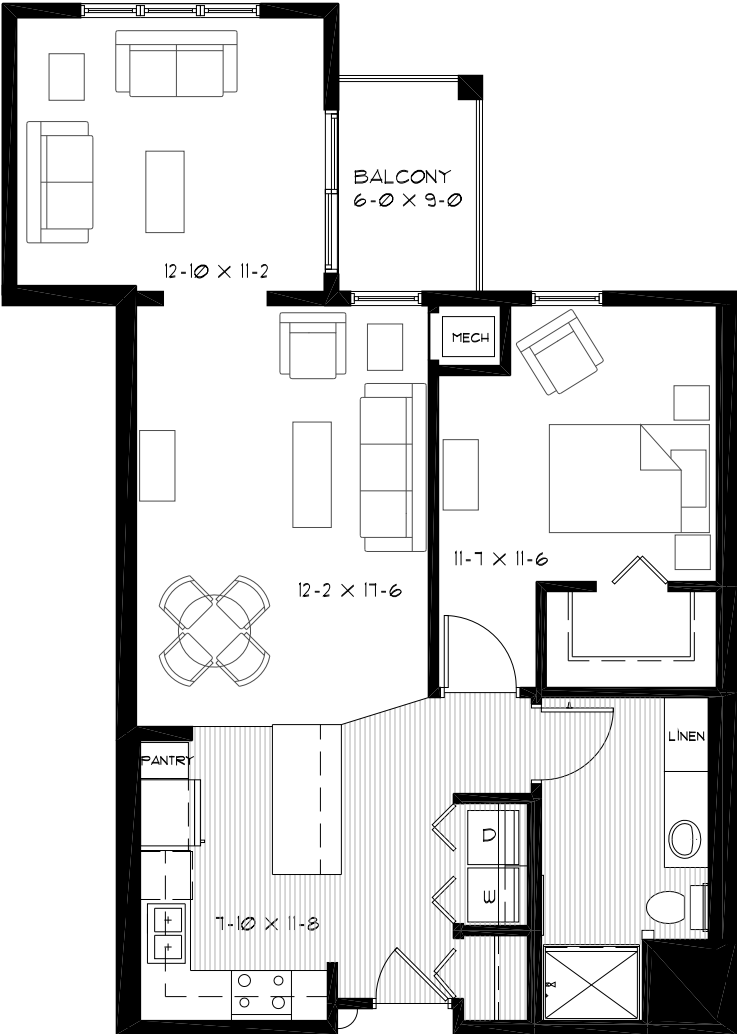
Additional fees may apply

- Underground heated parking
- Restaurant-style dining
- Internet
- Transportation for shopping and outings
- Additional storage
- Guest suites
- Guest dining
- Pets are welcome (guidelines apply)
- Outpatient therapy — physical, occupational and speech therapy



Sample Floor Plans

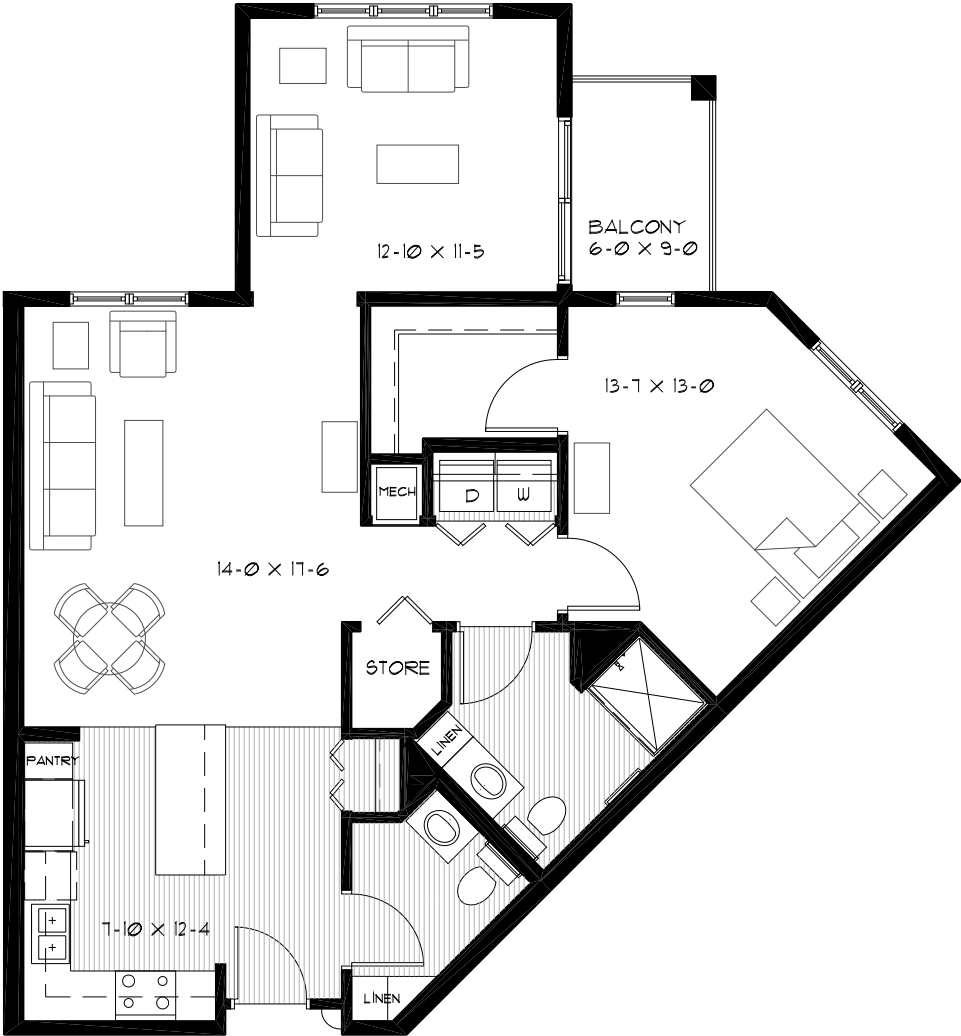
Evergreen
One Bedroom | 760 Sq. Ft.



Meadow
One Bedroom/Sunroom | 930 Sq. Ft.

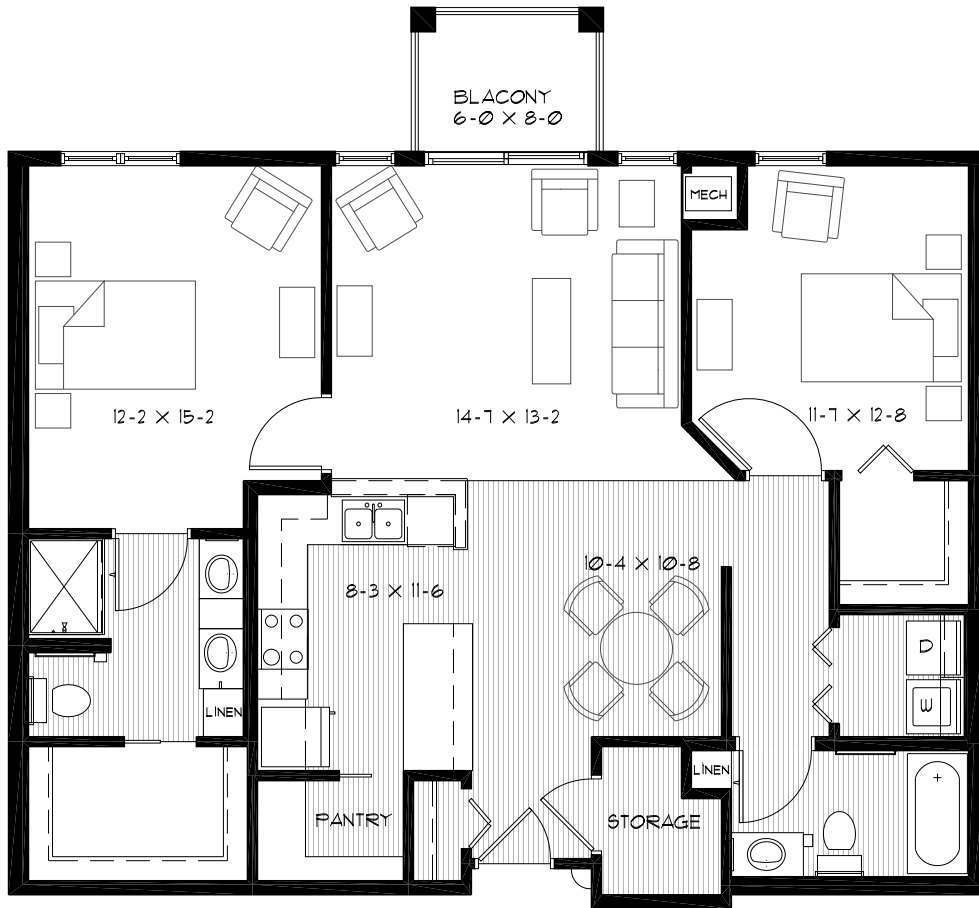
Point

One Bedroom/Sunroom | 1,070 Sq. Ft.



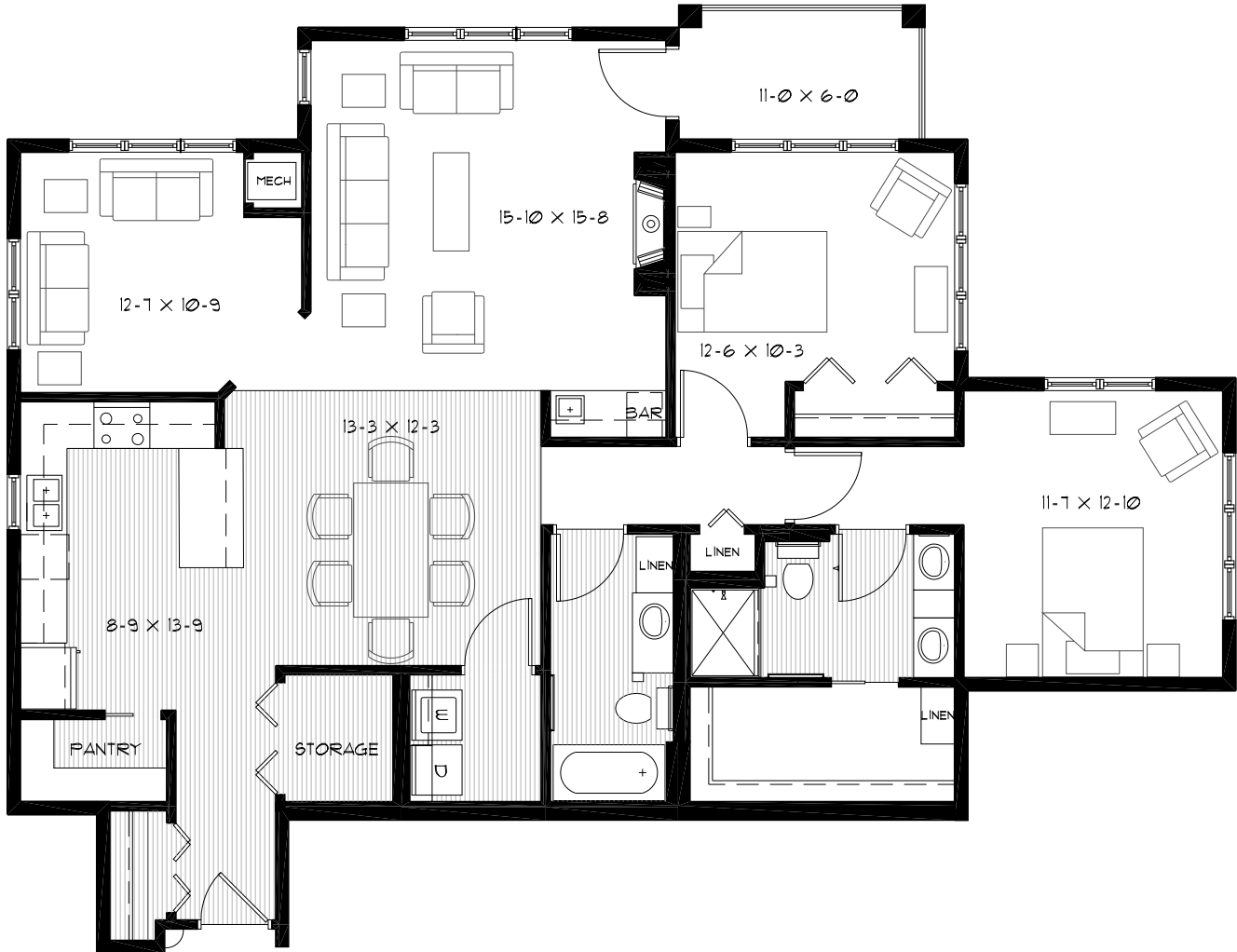
Prairie

Two Bedroom | 1,225 Sq. Ft.



Timberland

Two Bedroom/Sunroom | 1,590 Sq. Ft.



Floor plans, features and amenities are subject to change without notice. Stated dimensions, square footage and window placement are approximate. Additional floor plans may be available. Please ask about availability.

Our senior apartments offer maintenance-free living and comfortable floor plans with value and convenience. Nicely appointed common areas are well-suited for group events and casual gatherings. Social, recreational and volunteer opportunities help create a sense of community.

Distinctive Details

- Bright, open floor plans with spacious rooms and nine foot ceilings
- Fully equipped kitchens with refrigerator, stove/self-cleaning oven, dishwasher, garbage disposal and microwave
- Thoughtfully-designed bathroom with step-in shower and/or tub and shower
- Blinds on all windows and patio doors
- Handcrafted cabinetry
- In-home laundry with full size washer and dryer
- Individually controlled heat and central air conditioning
- Walk-in storage
- Private patio or balcony

Monthly Rental Fee

Apartment	Sq. Ft.	Rate
One Bedroom/One Bedroom Plus	735–1,070	\$2,280–\$3,390
Two Bedroom/Two Bedroom Plus	1,225–1,765	\$3,760–\$5,085



Pricing subject to change. Residency agreement available upon request.



262-468-2300

1205 E. Lisbon Road
Oconomowoc, WI 53066

TownerCrest.org

Living Options

- Senior apartments
- Assisted living apartments
- Memory care residences

Due to COVID-19 or other future circumstance, some features may be temporarily unavailable or offered in a different way. We anticipate features will become available in original form once it is prudent to do so. Presbyterian Homes & Services (PHS) communities comply with applicable federal civil rights laws and do not discriminate on the basis of race, color, national origin, age, disability or sex.

PresHomes.org

Español (Spanish): *Llame al 1-844-558-6125*

Hmoob (Hmong): *Hu rau 1-844-558-6125*

Tagalog (Filipino): *Tumawag sa 1-844-558-6125*

Professional management by PHS Management, LLC © 2021 Presbyterian Homes and Services
All faiths welcome. Equal housing opportunity.

9/23 

 **presbyterian
homes & services**
freedom to live well®